



*A C Lynn Zelmer
Box 1414 Main PO
Rockhampton QLD 4700
Australia*

Gympie 2008, semi-rural residential area buildings

These buildings were photographed September 2008 near the Forestry Museum north of Gympie. While the area is clearly residential acreage, it also contains farm and industrial (Forestry) buildings.

Modelling any of the residences would be a challenge, although dimensions are not

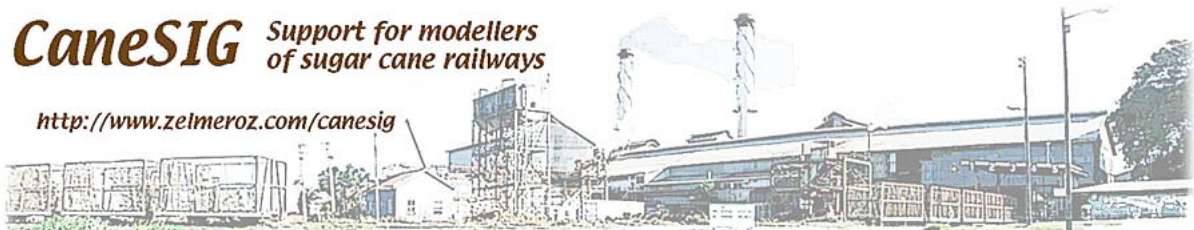
critical. However close attention to detail and clutter would make an eye-catching modern (1960s to present) residential scene.

Two views of a low-set house on metal stumps (below). The large porch enclosed with a wire screen appears to be a more recent addition to the basic house (note the roof colouring and the differences in wall sheathing).



CaneSIG *Support for modellers
of sugar cane railways*

<http://www.zelmeroz.com/canesig>





Small scale farm or workshop buildings (above). Note that doors are high enough for either medium-sized trucks or agricultural machinery. The far shed with its sloping roof and swinging

doors is much older than the closer shed with its roller doors.

Modern Forestry shed (below), a nearby shed had vehicle fueling facilities. Note the gas cylinder, fire hose, Hazchem and other safety signs.

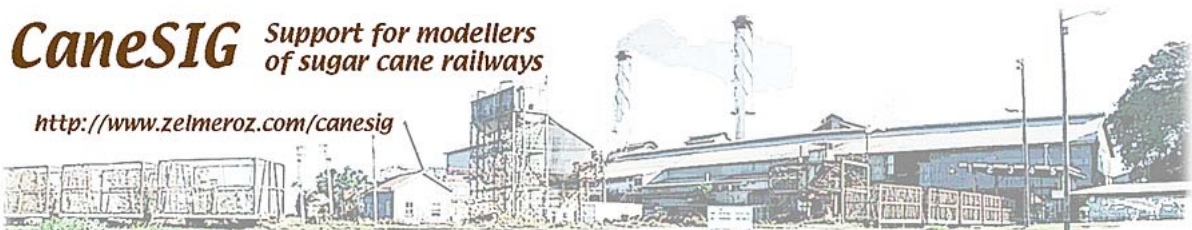


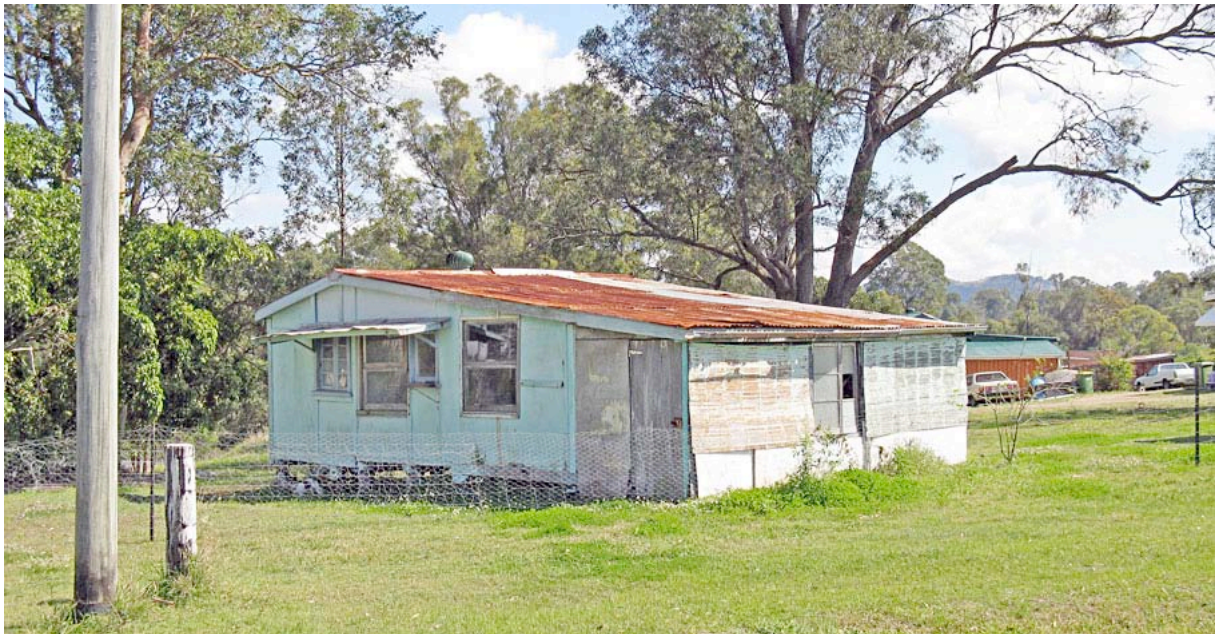
Three views of a residence (following page). Note the enclosed car port, seemingly now used as a sleep-out, and the variety of windows.

All photographs © Lynn Zelmer, September 2008.

CaneSIG Support for modellers
of sugar cane railways

<http://www.zelmeroz.com/canesig>





CaneSIG Support for modellers
of sugar cane railways

<http://www.zelmeroz.com/canesig>

