



CWA 1922-2022

The Queensland CWA was formed in 1922 in Brisbane and had expanded statewide to 283 Branches with 13,000 members by 1928. It was registered as a Corporate Body in 1926, making it one of the oldest incorporated bodies in Queensland. Activities are driven by the interests of the local area and range from education, cooking and craft competitions, workshops, networking events, international study, fundraising and advocacy through, in 2022, over 220 branches and 3500 members.

Railfans and modellers and modellers may be most interested in the rest rooms near railway stations but the CWA has had more substantial facilities in major centres. Large towns and cities likely had room for dozens of women to stay for a few hours (breast feeding infants or waiting for the train, for example) or even overnight and some functioned as community centres. A smaller town would normally have a couple of private rooms, a kitchen/dining area, and toilet facilities (not necessarily within the building). Some also had a veranda or garden area for sitting outside.

Given the essentially self-funded nature of the local groups it is likely that many of the cottages were located on municipally-owned blocks of land, easily accessible from shops and professional offices. A man might end up at the local pub after a day in town but a woman/mother needed a nearby refuge while waiting for him.

The cottages themselves were likely constructed by volunteer labour and built to local housing standards. While the other cottages in the accompanying Narrow Gauge Downunder article have been fully sheathed at some time, the current Google Street View shows the CWA cottage in Biggenden never had had its exterior fully sheathed, still showing its framing on sides less obvious from public view. One consequence of such construction, especially should the structure become heritage listed, is that air conditioning is impractical.

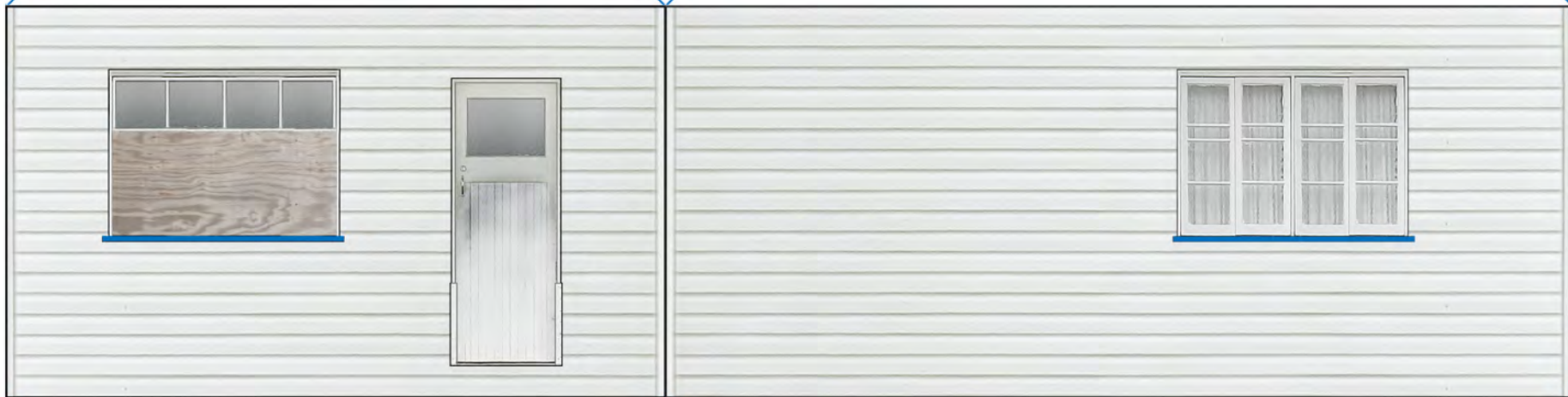
This is not a competition model so I've not included framing for the underside of the roof and other details. It shouldn't be visible with the selective depth compression used for the low profile model and hopefully would be hidden by the fascia board on a full model. And as with all such model roofs, construction gaps between each side are hidden by hip capping strips.



CWA Cottage: O scale 1:48

0 1 2 3 4 5 6 7 8 9 10 11 12

For non-commercial use only, © Lynn Zelmer 2022.
Modelling the Railways of Queensland Convention (zelmeroz.com/mrqc)



CWA Cottage: O scale 1:48

0 1 2 3 4 5 6 7 8 9 10 11 12

For non-commercial use only, © Lynn Zelmer 2022.
Modelling the Railways of Queensland Convention (zelmeroz.com/mrqc)



Pure
Cyan
Blue

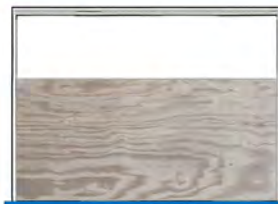


Trim to length for
window base.



End of wall trim (above): cut to length
and fold around corner.

Roof ridge cap (right): trim to length
and fold around roof module to cover
joins and eave. Note different widths
to allow for potential gaps in joins, etc.



Collection box is low
profile only (depth
reduced); works well
wrapped around
mounting bord.



CWA Cottage: O scale 1:48

0 1 2 3 4 5 6 7 8 9 10 11 12

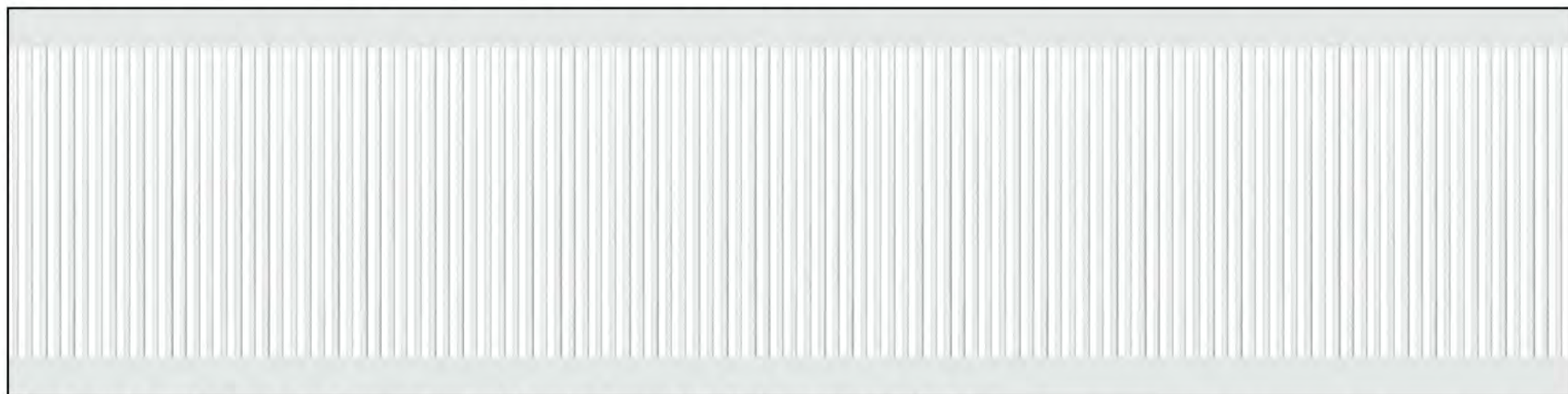
For non-commercial use only, © Lynn Zelmer 2022.
Modelling the Railways of Queensland Convention (zelmeroz.com/mrqc)



Two foot high lattice (above) for surrounding cottage base and hiding stumps, etc., when you don't want the work of creating individual boards. This section has a random neutral background to represent anything behind the lattice. Follow the steps below to create an open lattice. Variations might include omitting every other board for a more open lattice or spacing horizontal boards on 2' centres with vertical boards spaced as palings, rather than lattice.



Step 1: Do NOT remove the lattice boards above and below from the printed sheet. There are enough boards above to make up to an 8' x 40' lattice, suitable for anything from low to high set. You will need to prepare several copies if you want a lattice screen around all sides of the cottage. Use a very sharp knife/blade to remove the white spaces between the boards, carefully working from one side to the other.



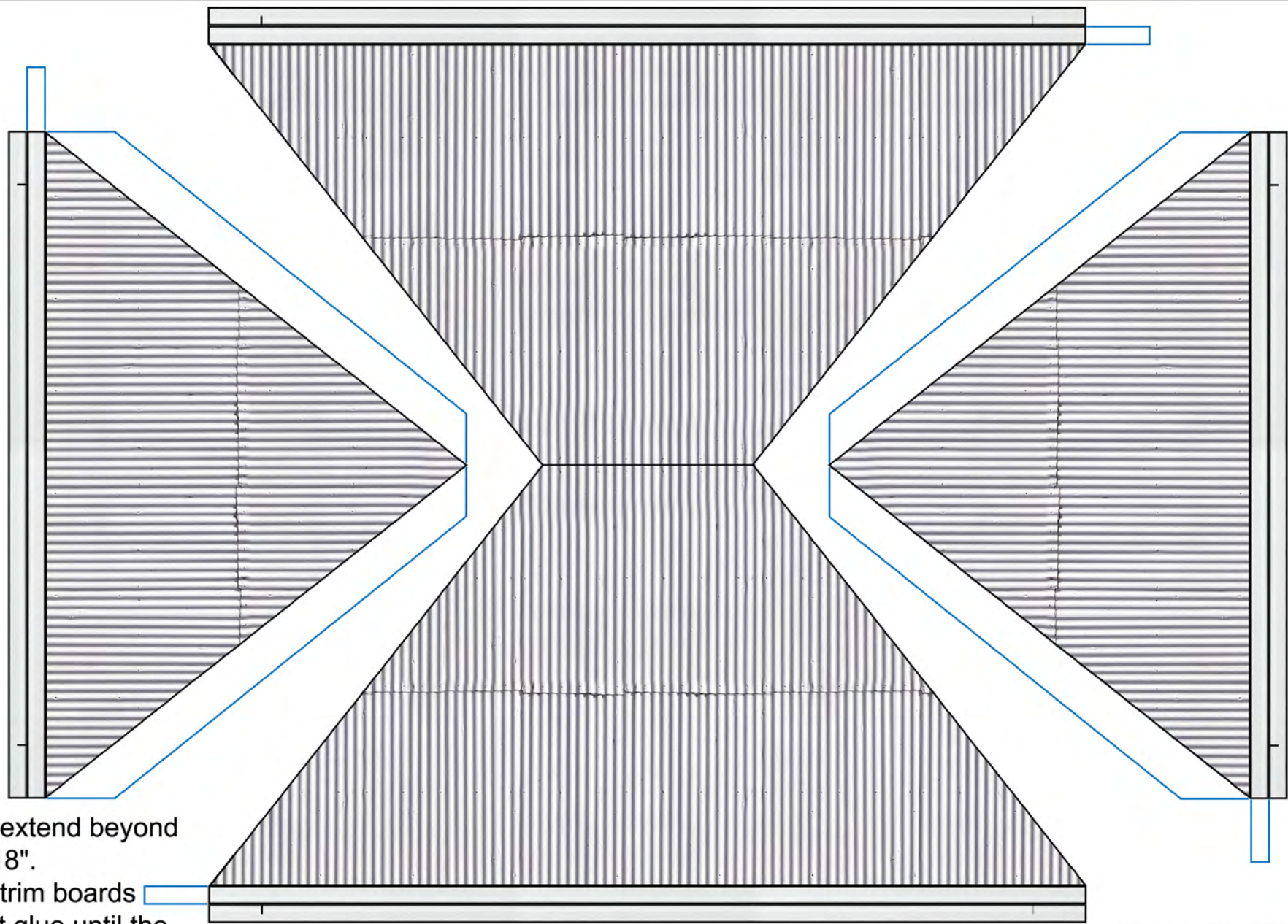
Step 2: Cut along the black lines above to remove the vertical module from the printed sheet. Turn the module over and coat with glue, then turn over again and fix to the horizontal board module [you may need 4 hands :-)]. When dry turn the two piece assembly over again and lightly spray the back side with a light gray paint to give a non-white back.

Step 3: Measure and cut the assembly to fit under your cottage. Use your creativity for broken boards, etc.

CWA Cottage: O scale 1:48

0 1 2 3 4 5 6 7 8 9 10 11 12

For non-commercial use only, © Lynn Zelmer 2022.
Modelling the Railways of Queensland Convention (zelmeroz.com/mrqc)



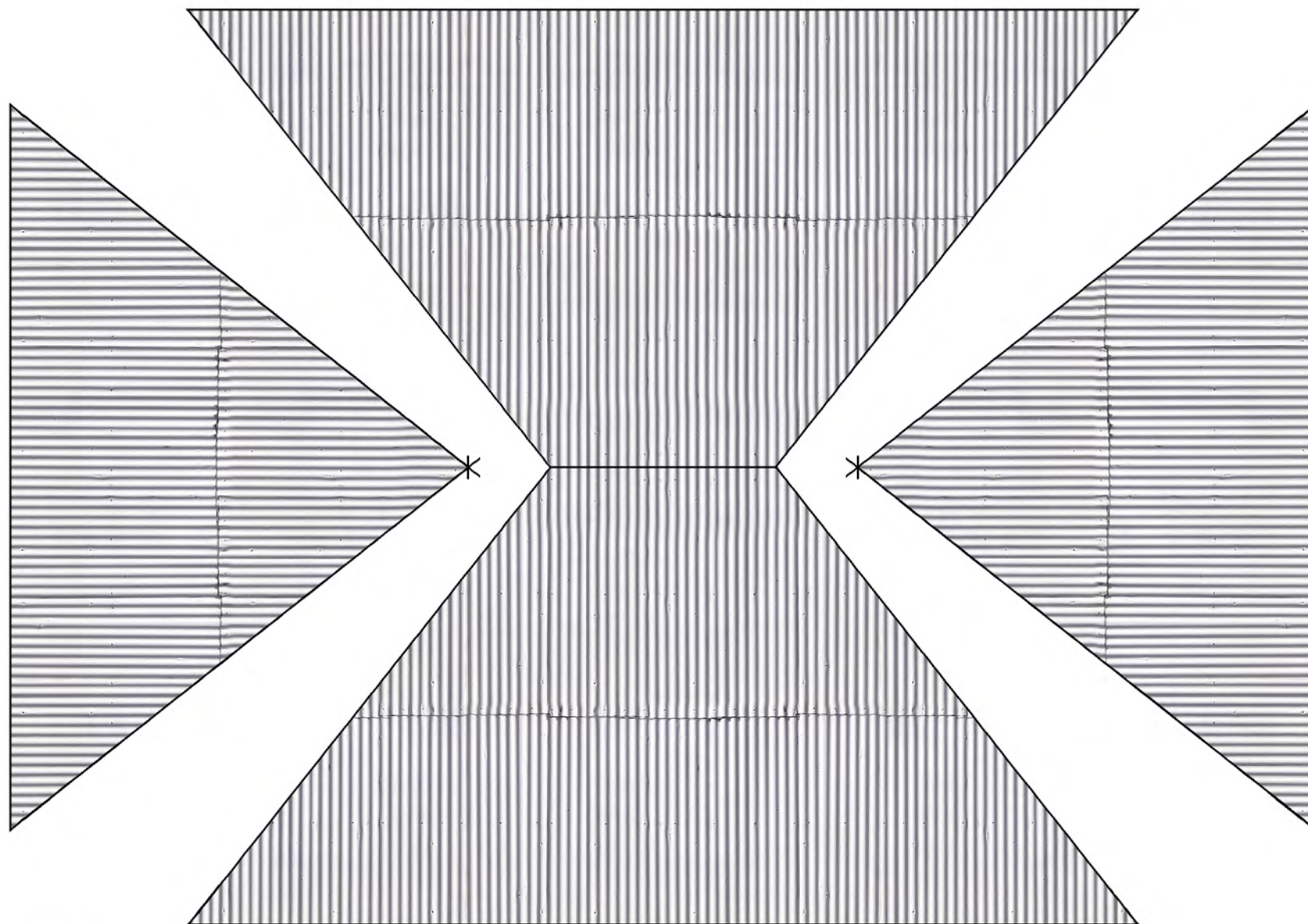
Eave will extend beyond walls by 18".

Fold roof trim boards but do not glue until the four roof sections have been glued together. Glue trim to reinforce edge & help prevent warping. If super-detailing the CI roofing material should overhang roof (ie trim boards) by 3" on all 4 sides.

CWA Cottage: O scale 1:48

0 1 2 3 4 5 6 7 8 9 10 11 12

For non-commercial use only, © Lynn Zelmer 2022.
Modelling the Railways of Queensland Convention (zelmeroz.com/mrqc)



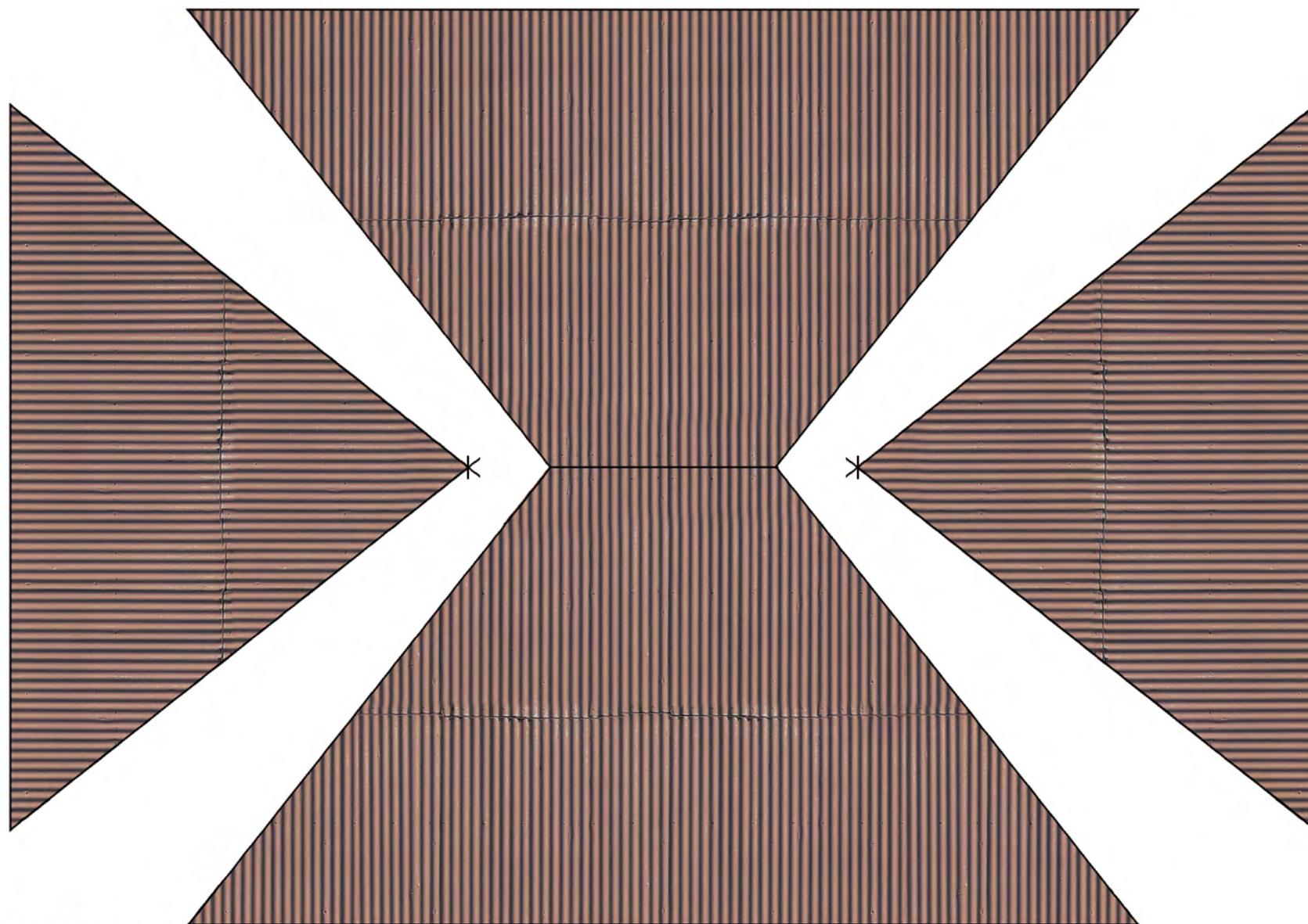
Roofing with 3" overhang beyond roof pattern

Print two copies and use for overlaying roof to create 3d effect. Glue first to roof to create overhang, cut upper CI sections at uneven edge from 2nd copy to overlay first. Ridge pieces available on another sheet.

CWA Cottage: O scale 1:48

0 1 2 3 4 5 6 7 8 9 10 11 12

For non-commercial use only, © Lynn Zelmer 2022.
Modelling the Railways of Queensland Convention (zelmeroz.com/mrqc)



Roofing with 3" overhang beyond roof pattern

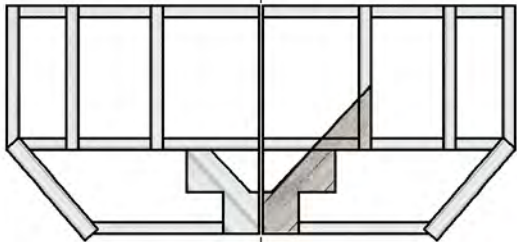
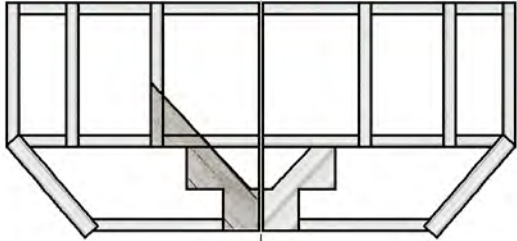
Print two copies and use for overlaying roof to create 3d effect. Glue first to roof to create overhang, cut upper CI sections at uneven edge from 2nd copy to overlay first. Ridge pieces available on another sheet.

CWA Cottage: O scale 1:48

0 1 2 3 4 5 6 7 8 9 10 11 12

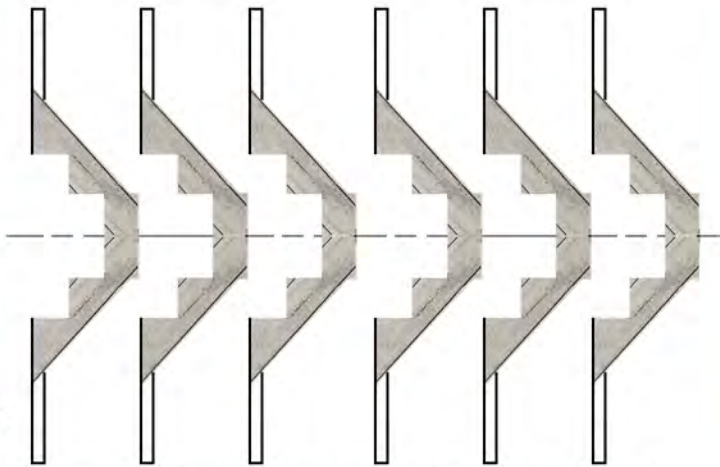
For non-commercial use only, © Lynn Zelmer 2022.
Modelling the Railways of Queensland Convention (zelmeroz.com/mrqc)

This side to cottage when assembled



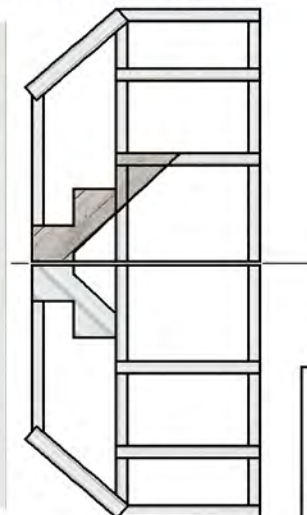
Cut on coloured lines
then fold for gluing

Various width/length boards (below and far right) for decking and stair treads. Either fold in half and glue or glue to plain card before cutting to size for double thickness boards.



Stair units for 2' high stumped base.

Fold far left railing pair in half and glue before cutting out. Dark timber texture goes to inside when assembling. Extra sets provide detailing timber, etc. Fold stair units and glue before cutting. They go inside railing units to provide support for deck/treads.



CWA Cottage: O scale 1:48

0 1 2 3 4 5 6 7 8 9 10 11 12

For non-commercial use only, © Lynn Zelmer 2022.
Modelling the Railways of Queensland Convention (zelmeroz.com/mrqc)