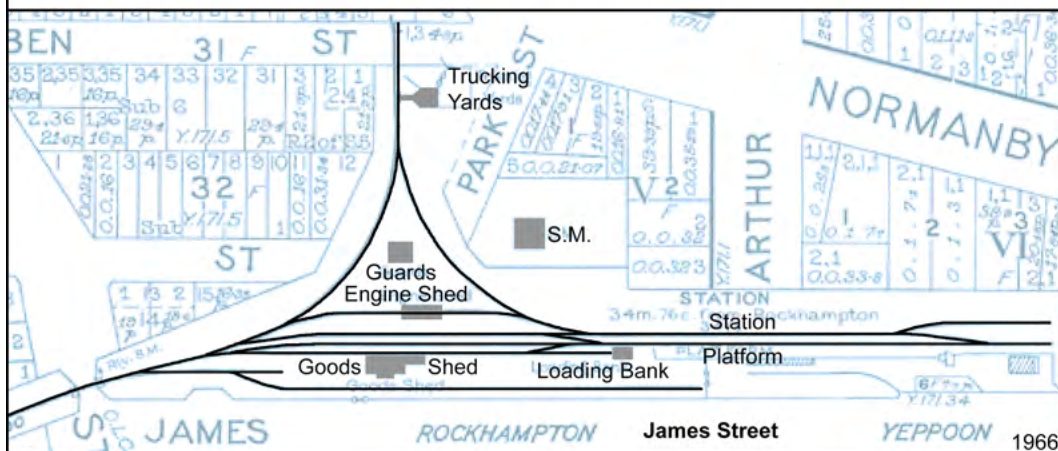




1 February 2008



18 January 2002



24 September 2013

Disclaimer: This kit has NOT been fully tested for design errors, but an experienced card model builder should have no real problems with its assembly.

Note in particular that glue tabs have been duplicated (both sides and ends, one set must be removed) and there's more than one way to assemble some elements.

Above all, be creative!

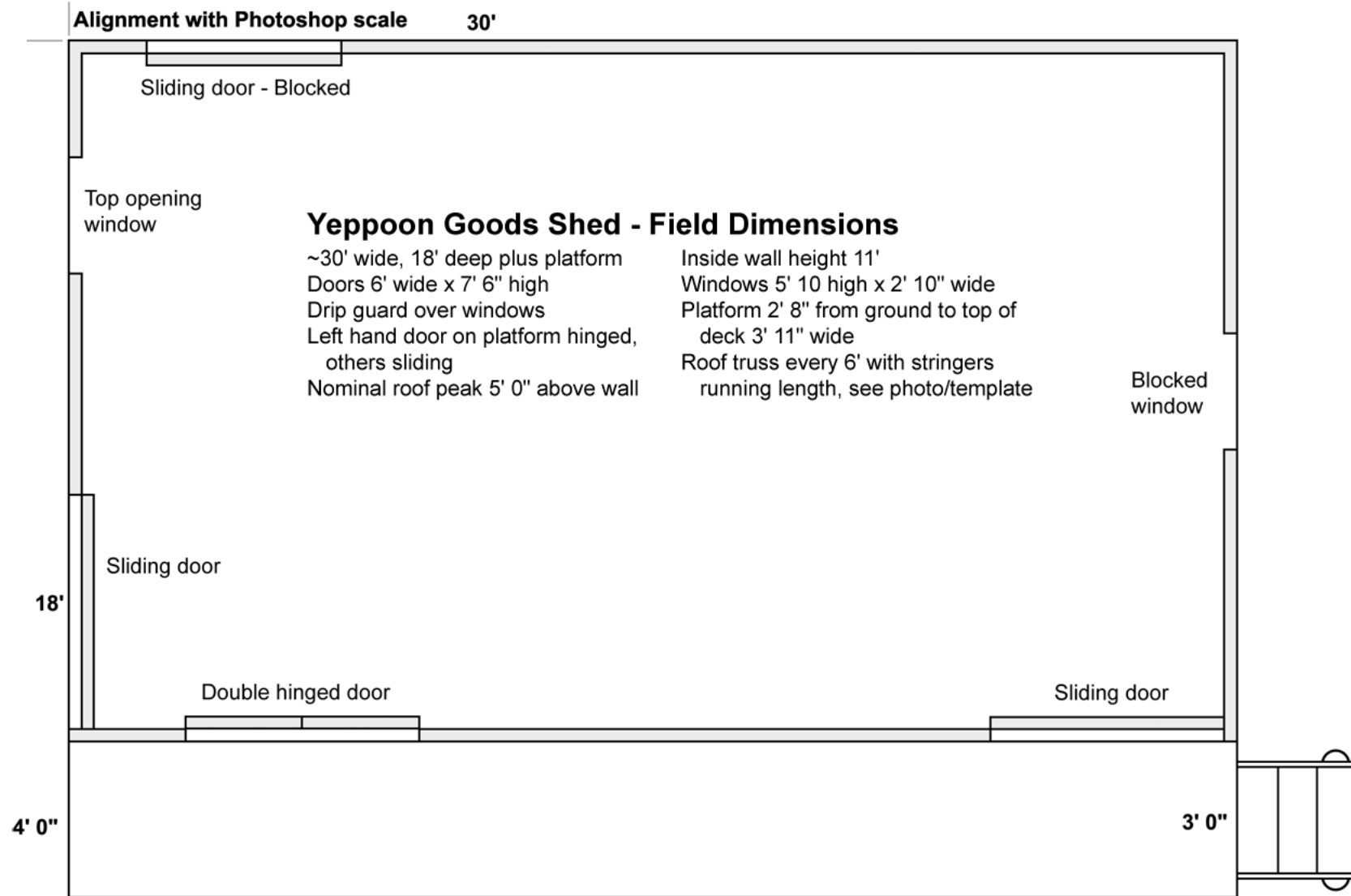


Kit development resources courtesy John Armstrong, Doug Fardell, & Capricorn Coast Historical Society. Photos this page by Lynn Zelmer (kit designer).

Yeppoon Goods Shed - O Scale (1:48)

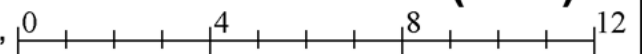
QldRailHeritage.com/mrqc,
© September 2018

0 4 8 12



Yeppoon Goods Shed - O Scale (1:48)

QldRailHeritage.com/mrqc,
© September 2018



End
A

End
B

Remove this glue strip if detailing interior, otherwise fold under and glue to platform. Ensure wall is straight.

End
B

End
A

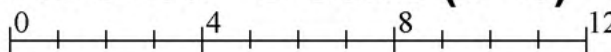
Remove this glue strip if detailing interior, otherwise fold under and glue to platform. Ensure wall is straight.

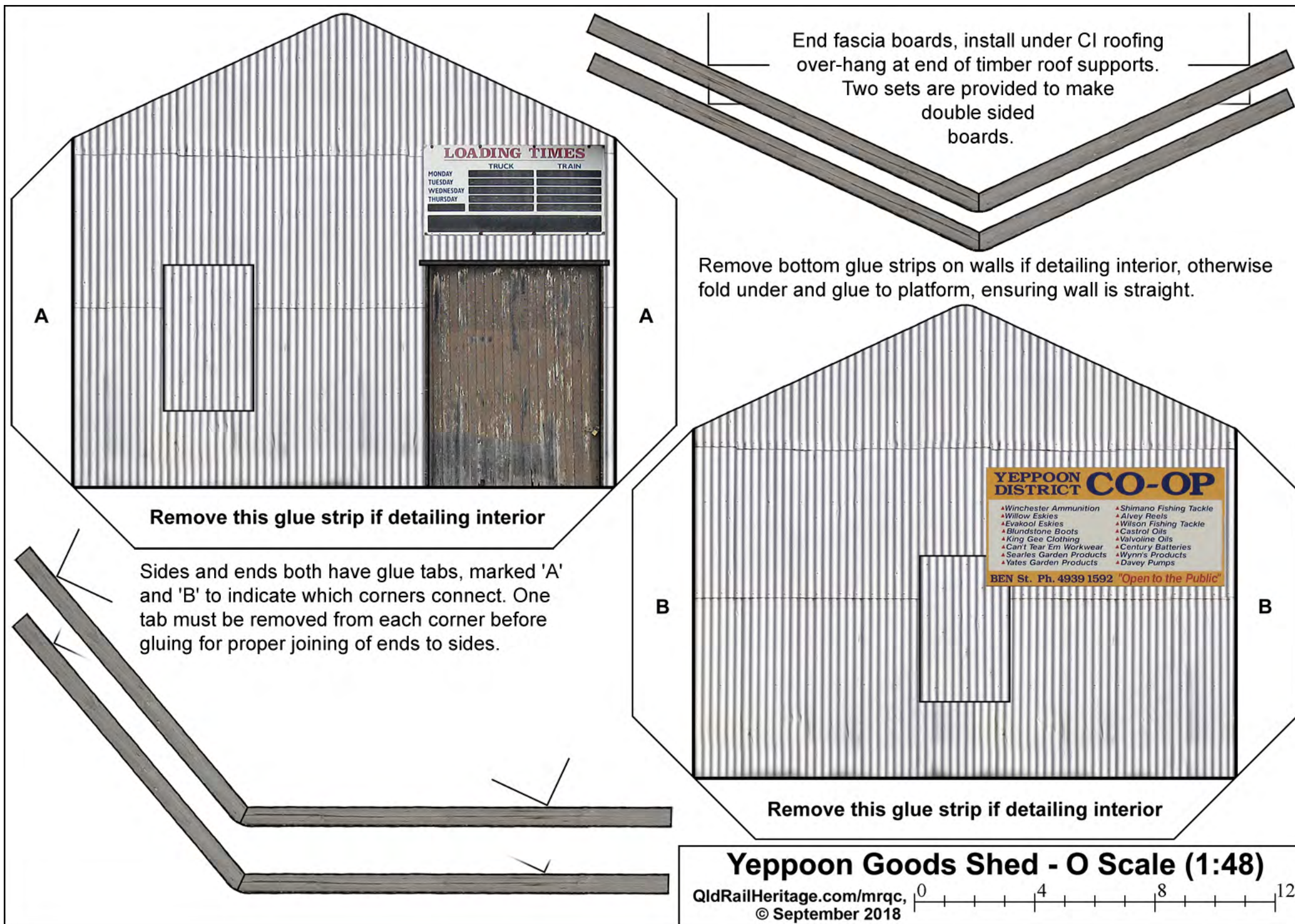
Platform roof supports: Four small brown rectangles on front wall at top of door height indicate where roof supports fit. Fabricate supports from texture on another page (or use stained scale dimension lumber).



Yeppoon Goods Shed - O Scale (1:48)

QldRailHeritage.com/mrqc,
 © September 2018







Goods Shed Floor/Platform

The two platform components are designed to create an empty box with the timber texture on the top and sides, and the stump locations on the bottom.

The bottom component fits inside the top AFTER it has been filled with layers of card, foamcore or MDF to provide a solid base for the shed and stumps.

Alternatively, build the timber top/sides (left) as an open bottom box, then fit a piece of MDF inside and glue the stump sheet on the bottom (ie delete the bottom component's sides).

The platform requires at least 24 normal length stumps (the others may not be visible in some locations) plus 2 short stumps under the stairs. The stump materials supplied can make any reasonable height stump. Cut to size for your location before assembly.

The stairs are designed for edge joining, use scrap 'timber' (left) for braces or 'semi-housing' if desired.

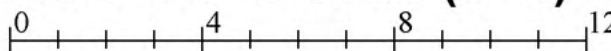


Short boards fit between sides.



Yeppoon Goods Shed - O Scale (1:48)

QldRailHeritage.com/mrqc,
© September 2018



Glue to underside of timber floor texture

Glue to inside back of sides of timber floor texture

Platform side, note different stump spacing

Floor/Platform Base

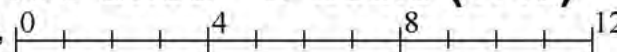
Score and fold underside so it fits neatly into timber texture top component. Check orientation for shed location vs covered platform as this affects stump placement.

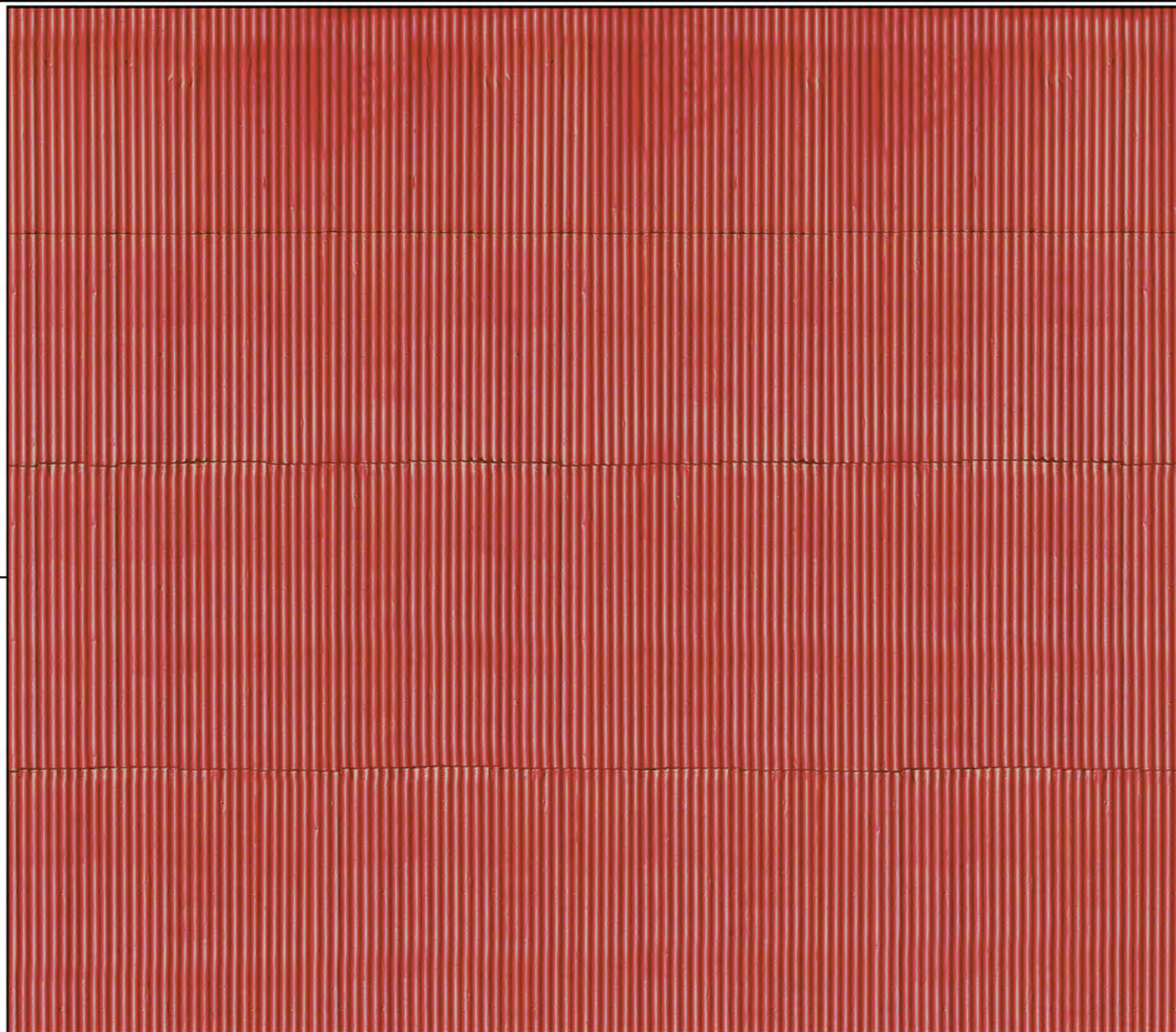
Fold the brown glue strip to vertical. Cut several layers of card, foamcore or MDF to fit inside and fold the white glue strip over to hold them together AND fasten to underside of top (timber texture) component.

This should result in a solid floor/platform that will assist gluing both the shed itself and the stumps in place.

Yeppoon Goods Shed - O Scale (1:48)

QldRailHeritage.com/mrqc,
© September 2018

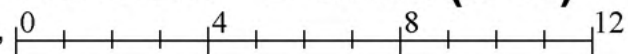




CI Roofing: Texture provided (above) may be larger than the required roof area. Measure and cut to size after walls and roof truss structure is completed. Note the roof ridge mark so the roof extends over verandah. Make multiple copies of this page if individual roofing sheets are desired.

Yeppoon Goods Shed - O Scale (1:48)

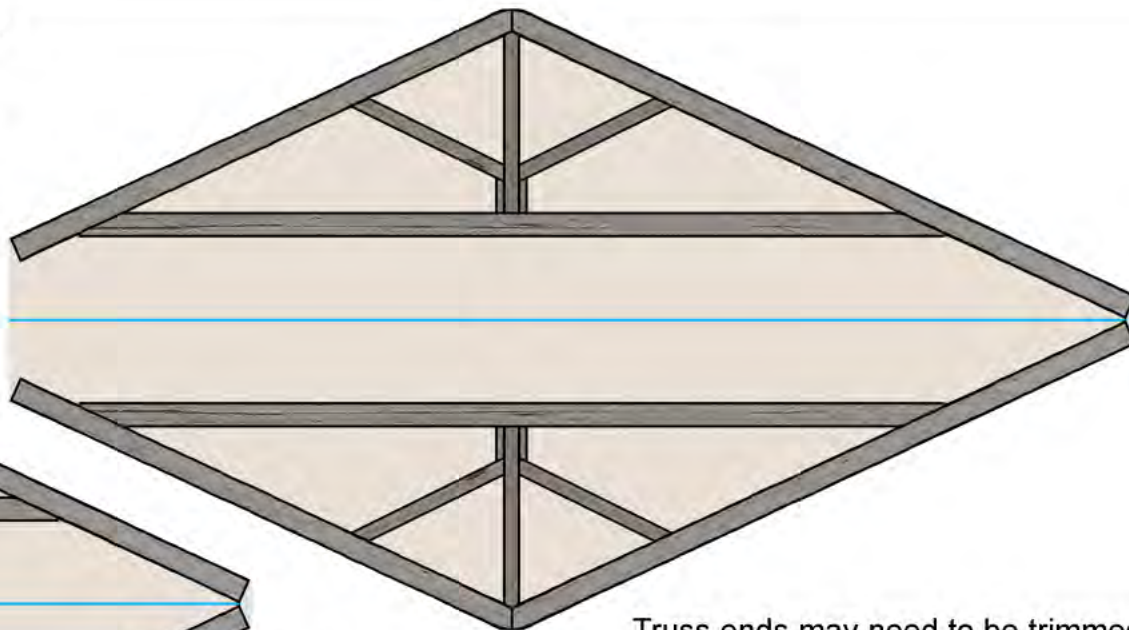
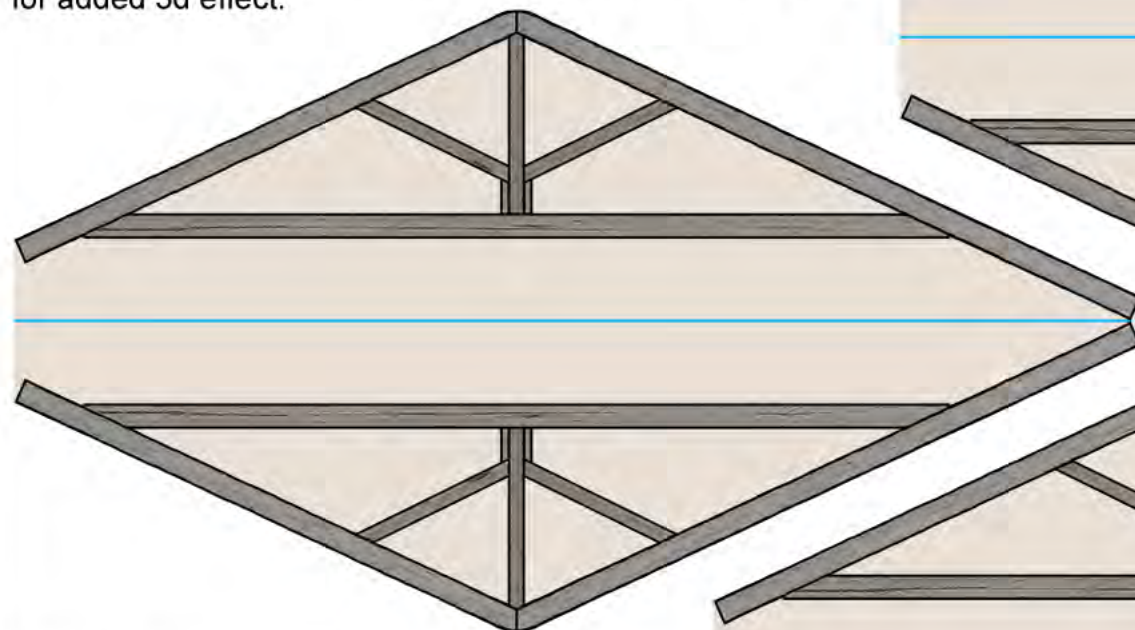
QldRailHeritage.com/mrqc,
© September 2018



Timber roof trusses: Print two copies of this sheet for full set of six trusses.

Cut around outside of truss module as shown by light brown area. Fold over on blue guideline and glue, then cut out all light brown areas for two layer double-sided truss.

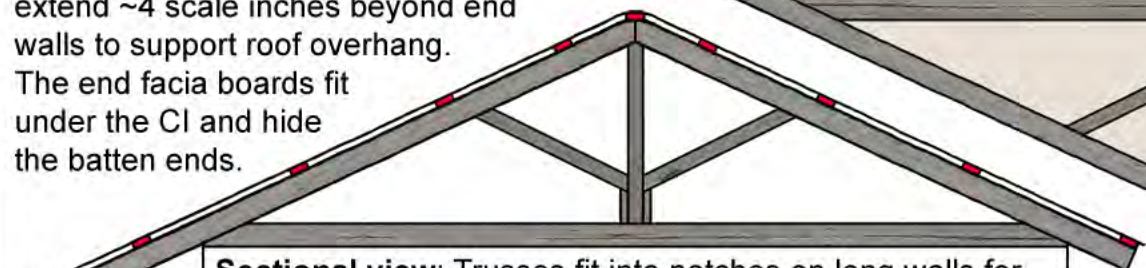
Print additional copies and cut out individual boards to apply for added 3d effect.



Truss ends may need to be trimmed for a straight fit along roof edge and to ensure fascia boards fit under CI roof sheathing.

Roof battens: Textures for battens and fascia boards are on another page. Battens should extend ~4 scale inches beyond end walls to support roof overhang.

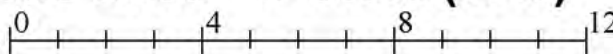
The end fascia boards fit under the CI and hide the batten ends.



Sectional view: Trusses fit into notches on long walls for CI sheathing to fill gap between trusses. Red indicates location of battens with CI roof sheathing curved over peak.

Yeppoon Goods Shed - O Scale (1:48)

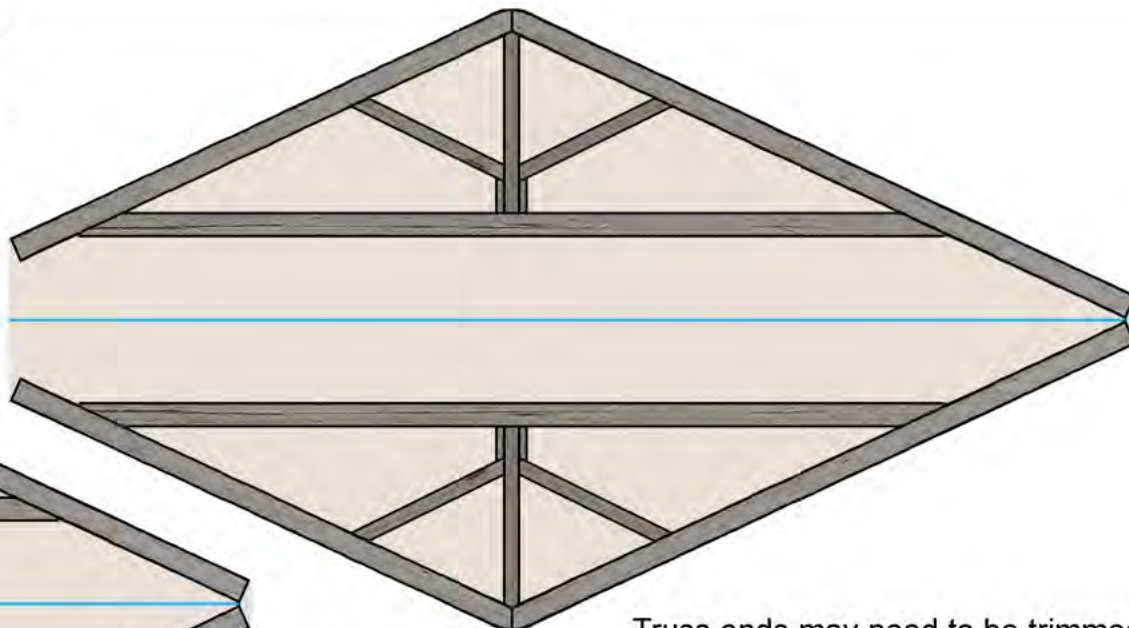
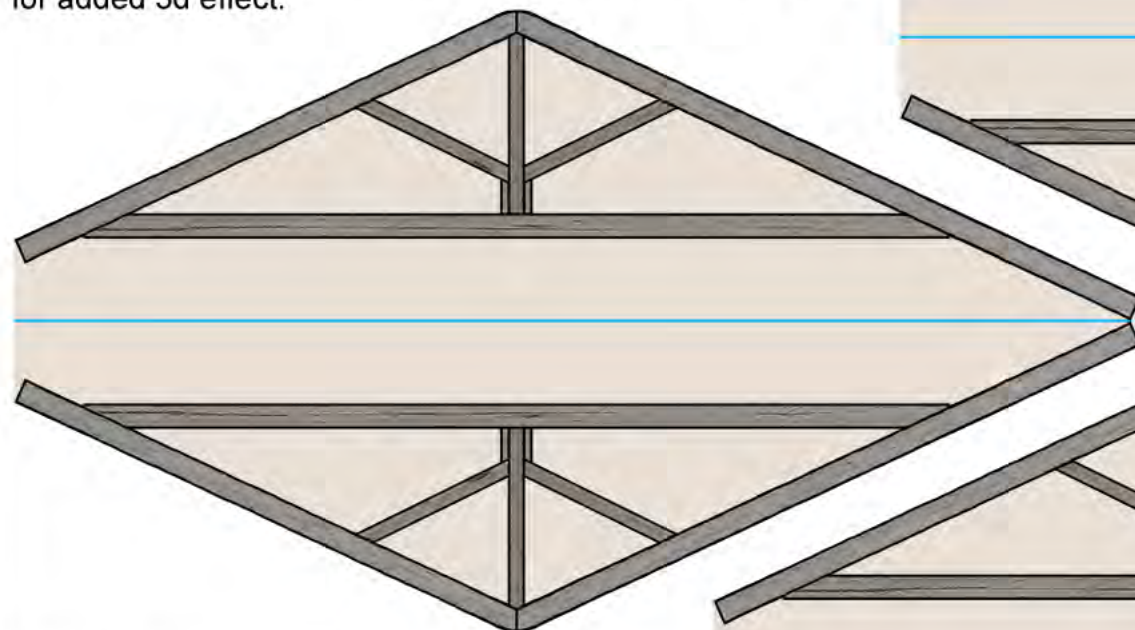
QldRailHeritage.com/mrqc,
© September 2018



Timber roof trusses: Print two copies of this sheet for full set of six trusses.

Cut around outside of truss module as shown by light brown area. Fold over on blue guideline and glue, then cut out all light brown areas for two layer double-sided truss.

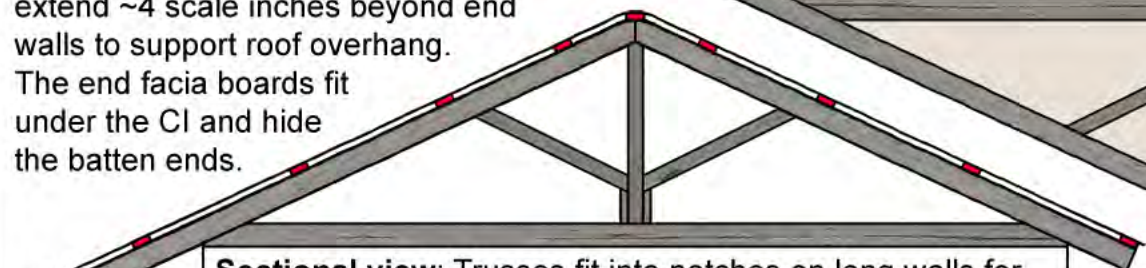
Print additional copies and cut out individual boards to apply for added 3d effect.



Truss ends may need to be trimmed for a straight fit along roof edge and to ensure fascia boards fit under CI roof sheathing.

Roof battens: Textures for battens and fascia boards are on another page. Battens should extend ~4 scale inches beyond end walls to support roof overhang.

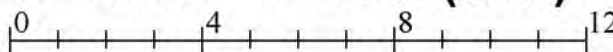
The end fascia boards fit under the CI and hide the batten ends.



Sectional view: Trusses fit into notches on long walls for CI sheathing to fill gap between trusses. Red indicates location of battens with CI roof sheathing curved over peak.

Yeppoon Goods Shed - O Scale (1:48)

QldRailHeritage.com/mrqc,
© September 2018

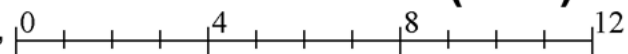


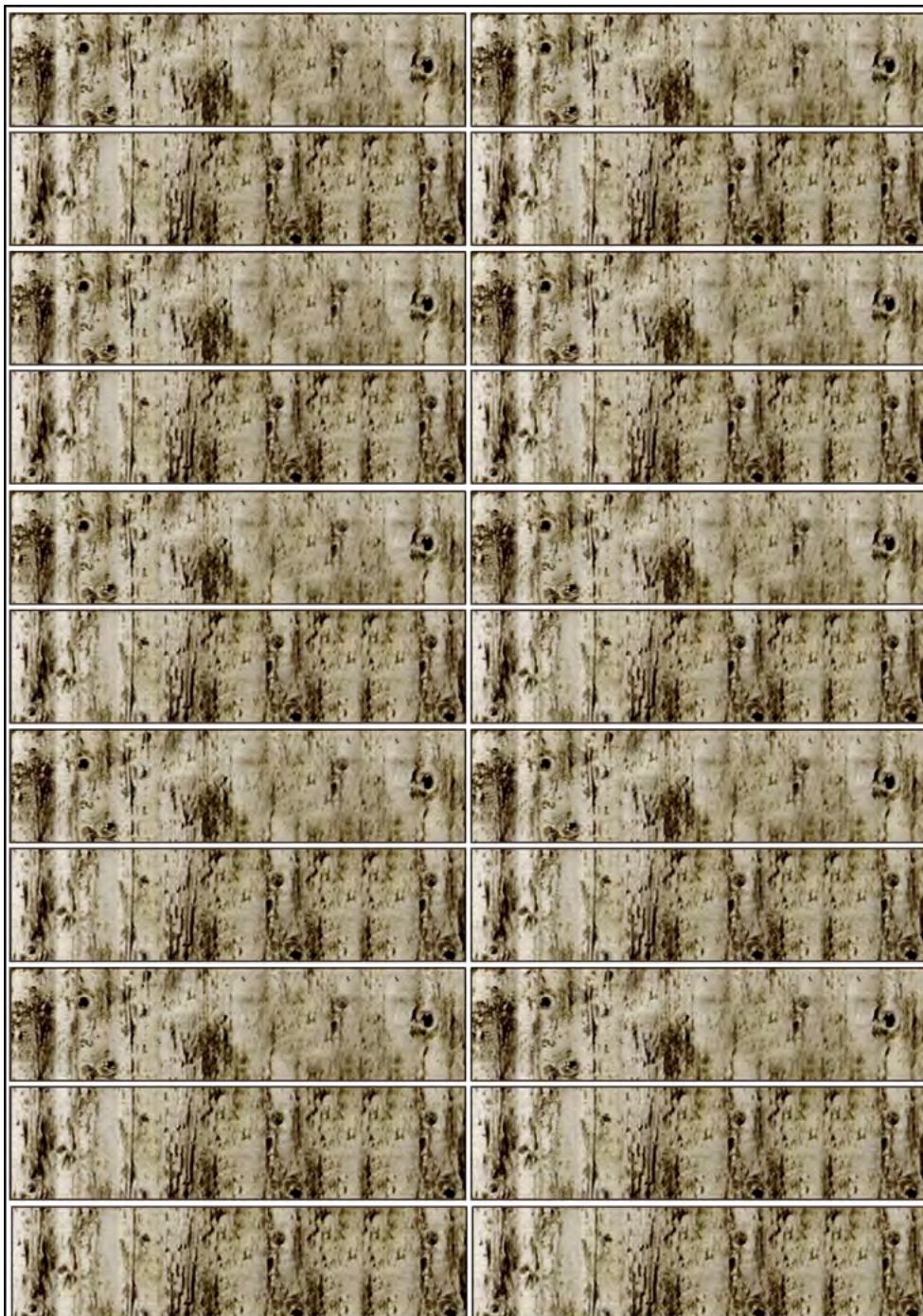


Underside of CI Roofing: Texture provided (above) may be larger than the required roof area. Measure and cut to the same size as the top side and glue the two layers together. Align the roof ridge marks so the CI joints match.

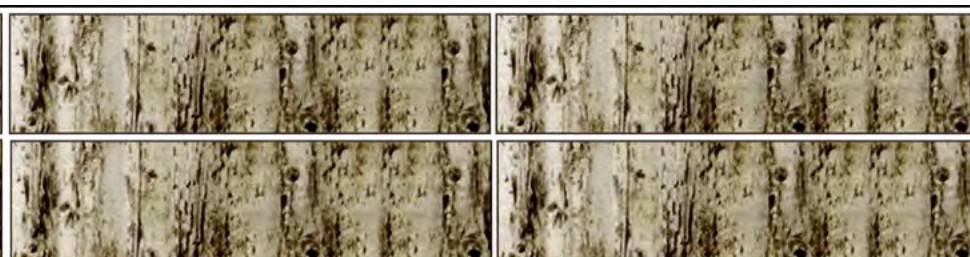
Yeppoon Goods Shed - O Scale (1:48)

QldRailHeritage.com/mrqc,
© September 2018





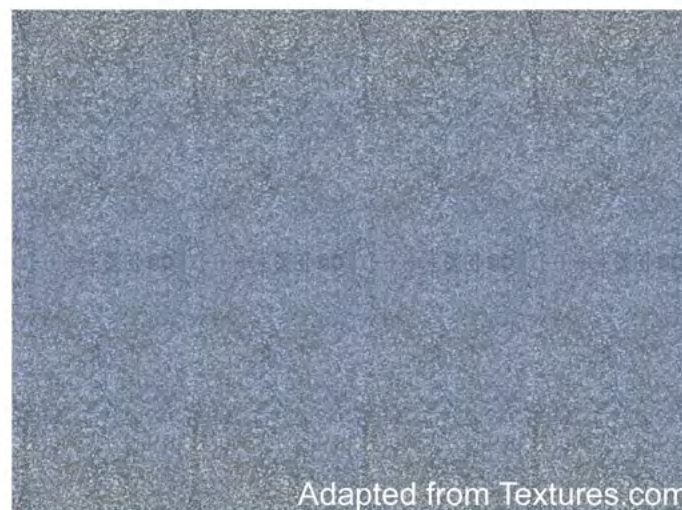
Stumps: 24 required for outside of shed and platform, plus two short stumps for under end steps. Print sheet twice to fill in centre stumps.



Stumps: Roll texture strip around skewer or dowel, trim and taper end for an invisible join and glue. Note the need for different length for shed and stairs, also individual lengths for rough or sloping terrain.

Stump Caps (Ant Caps): Placed on top of the stumps that support the structure to help spot termites entering the structure. Commercial stump caps are typically *Mould Edge Square* (120-350mm) or *Round* (250-350mm) in galvanised or zinc coated metal, and installed with the flare downwards.

Cut squares or use a hole punch to create caps larger than the stump's diameter and fold edges down before installing.



Adapted from Textures.com

Galvanised metal for stump caps

Yeppoon Goods Shed - O Scale (1:48)

QldRailHeritage.com/mrqc,
© September 2018

0 4 8 12

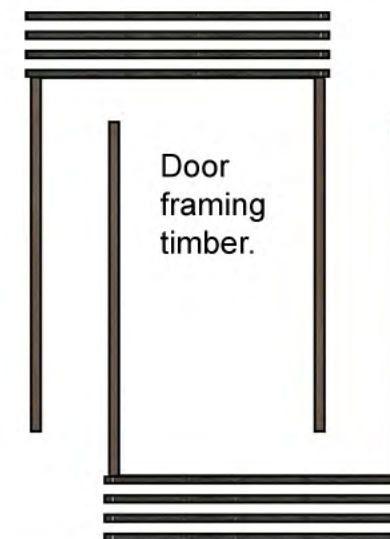


8" Timber Boards: Fold on blue guideline, glue to create double-sided timber texture and slice off individual boards as needed. The fascia boards for front and back of the shed are cut from this texture — measure the truss ends first to get the correct width (may be as narrow as 6" depending on how close you've cut the timber trusses). The 4" wide platform roof supports are also cut from this texture after measuring to get the correct length.



<-- Extra platform facing timber, perhaps useful for 3d effect.

Doors: Cut hole in wall texture and mount behind, either open or closed, for 3d effect if desired. Yes, all the sliding doors are the same, but they aren't all visible from any single location.



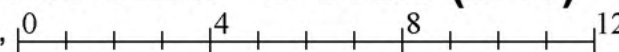
Door framing timber.



Platform guard rails to protect CI walls.

Yeppoon Goods Shed - O Scale (1:48)

QldRailHeritage.com/mrqc,
© September 2018





Pineapple Boxes, Yeppoon - O Scale (1:48)

QldRailHeritage.com/mrqc, 0

© April 2018

12 8 4



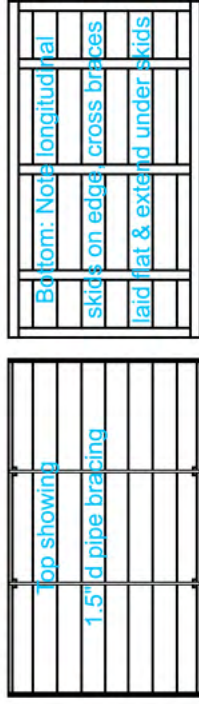
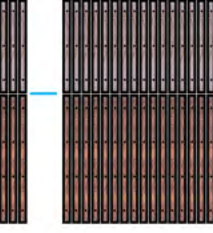
←-- Metal and timber straps - cut and fold over.



End

Side

- 1.5" vertical steel straps sides
- 1" x 2" timber vertical straps inside
- 1.5" d pipe, ends flattened across top
- 2" angle welded frame corners/ends
- 1" x 6" timber sides/floor
- 10" wide galvanised plates ends
- 2" x 3" timber skids/braces under box



Top showing

1.5" d pipe bracing

Bottom: Note longitudinal skids on edge cross braces laid flat & extend under skids

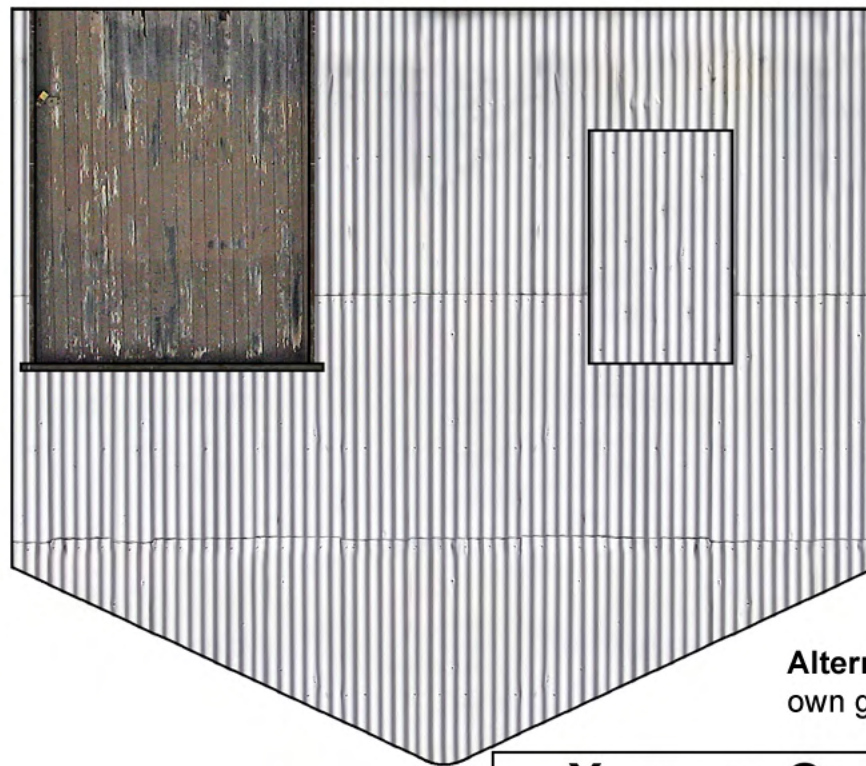
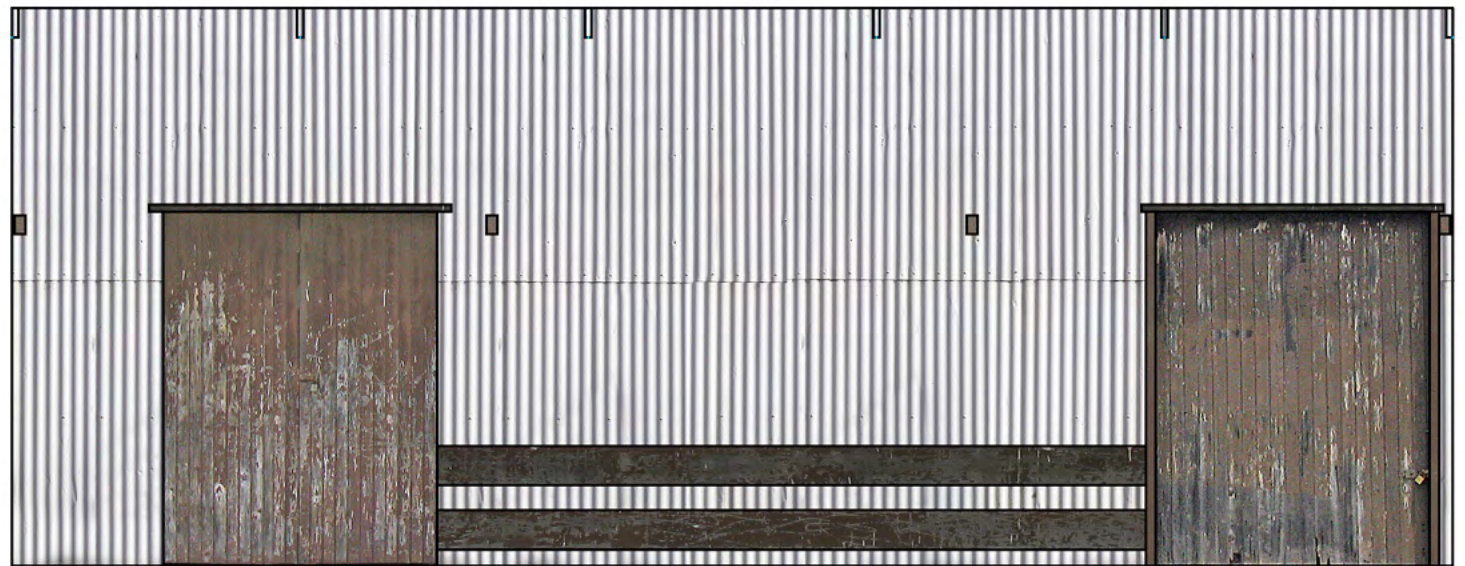


Fold lines in blue.



Use 2" x 3" scale lumber, stained appropriately, for cross braces (like joists) and skids under box.





Alternate wall sets without signs: Add your own glue tabs, etc.

Yeppoon Goods Shed - O Scale (1:48)

QldRailHeritage.com/mrqc,
© September 2018

0 4 8 12