



Fold ^ line

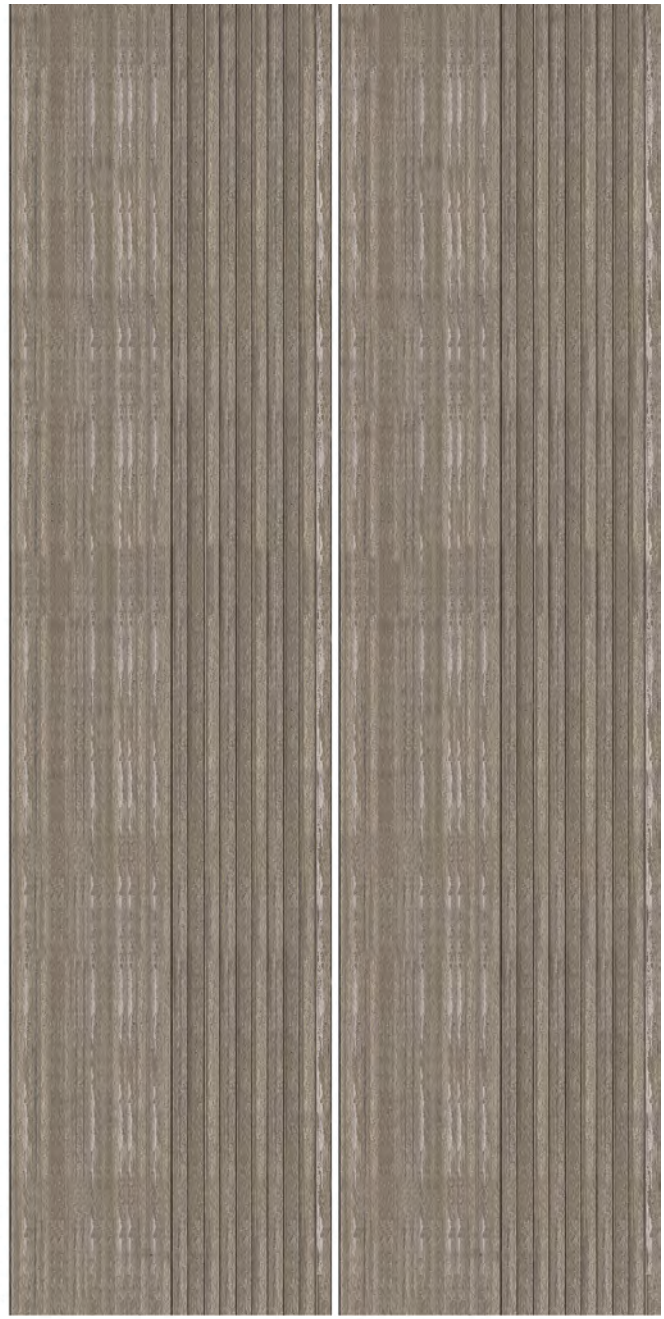
Trim overhanging CI from top of outside wall texture after gluing

Plain plywood, optional



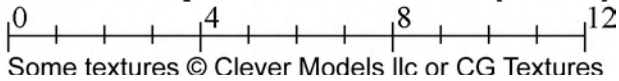
Small stock of 6" & 8" boards (right). Fold each on line between marked boards and plain area for double-sided.

This is the dryer shed. The dryer itself is part of the lunch room kit.

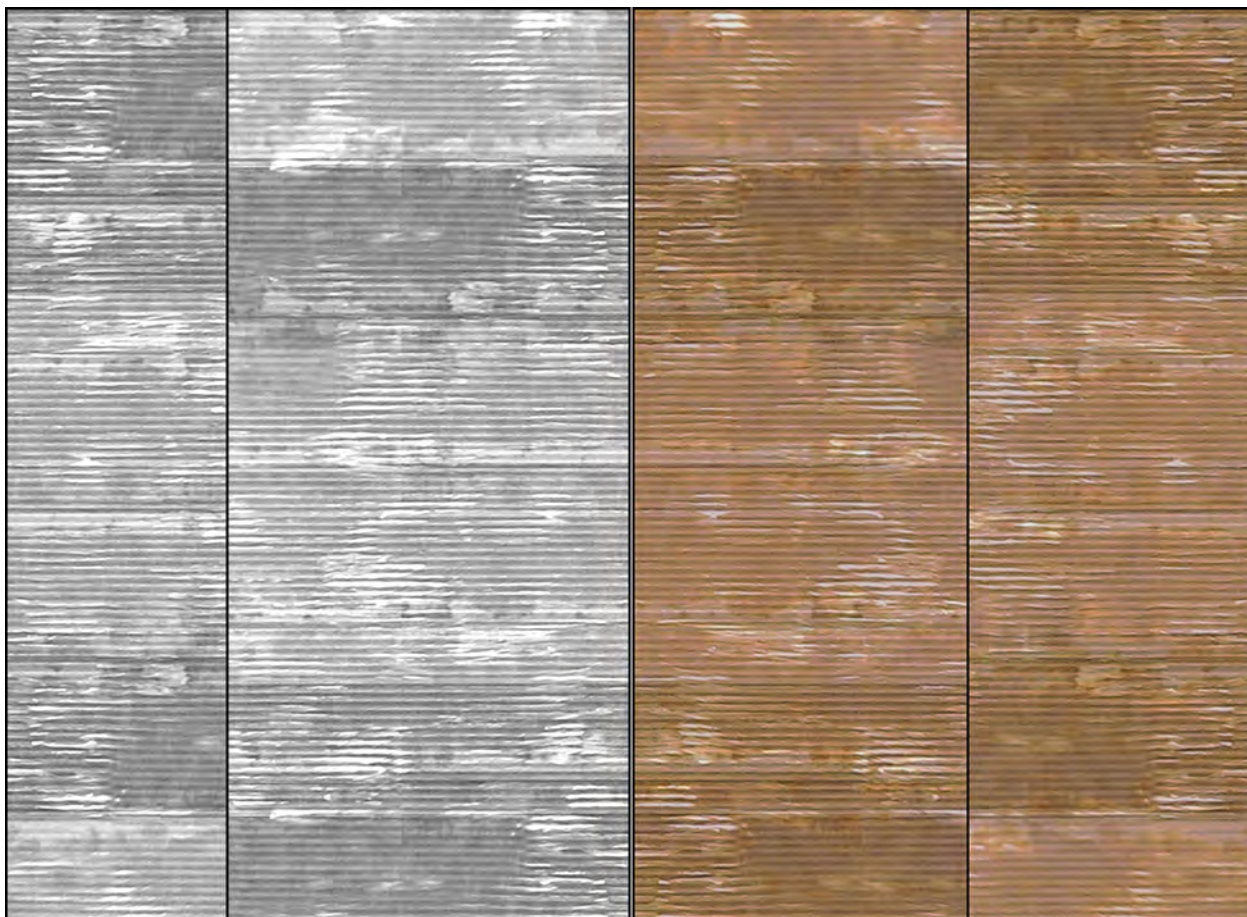


Moreton Mill's River Depot - O Scale (1:48)

QldRailHeritage.com/mrqc, © May 2015



Some textures © Clever Models llc or CG Textures



Fold ^ line

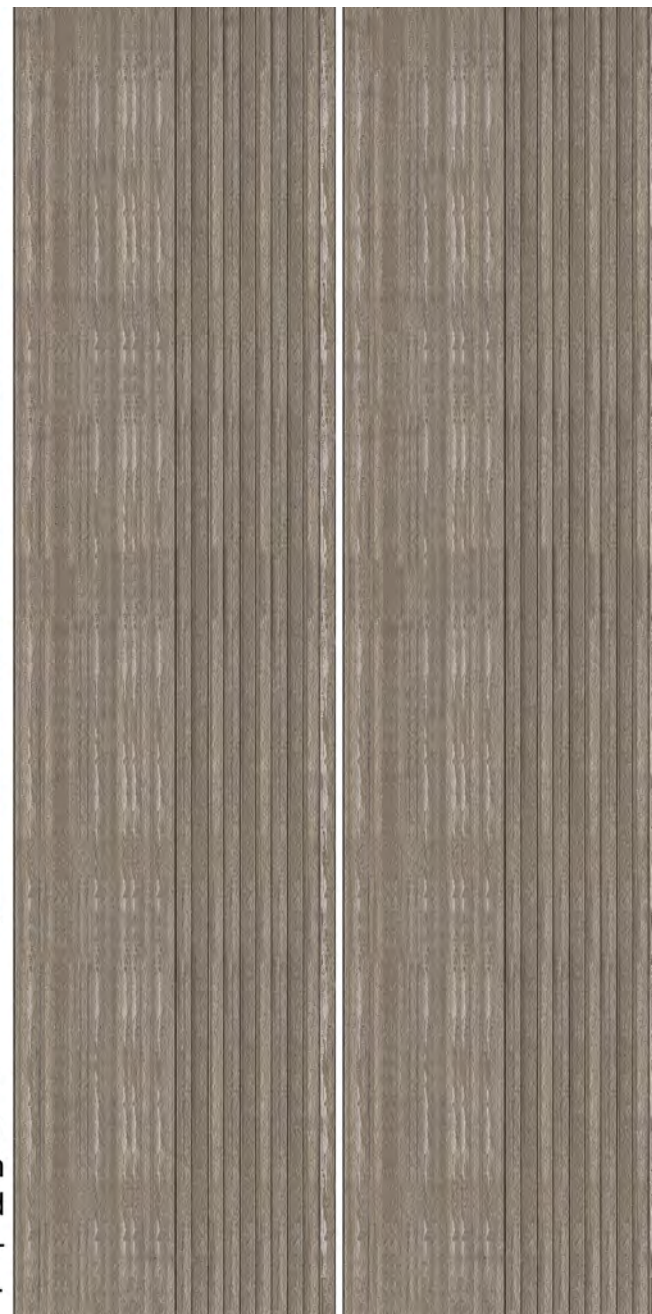
Hole must be cut for dryer chimney after location in shed is determined

Original 18' wide, 16' deep. Model 12' wide, 16' deep with ~13' x 19' roof coverage (no overhang one side). Overlay for creating 3D effect below.

Note flat roof: can only be sloped if lunch room is on stumps!



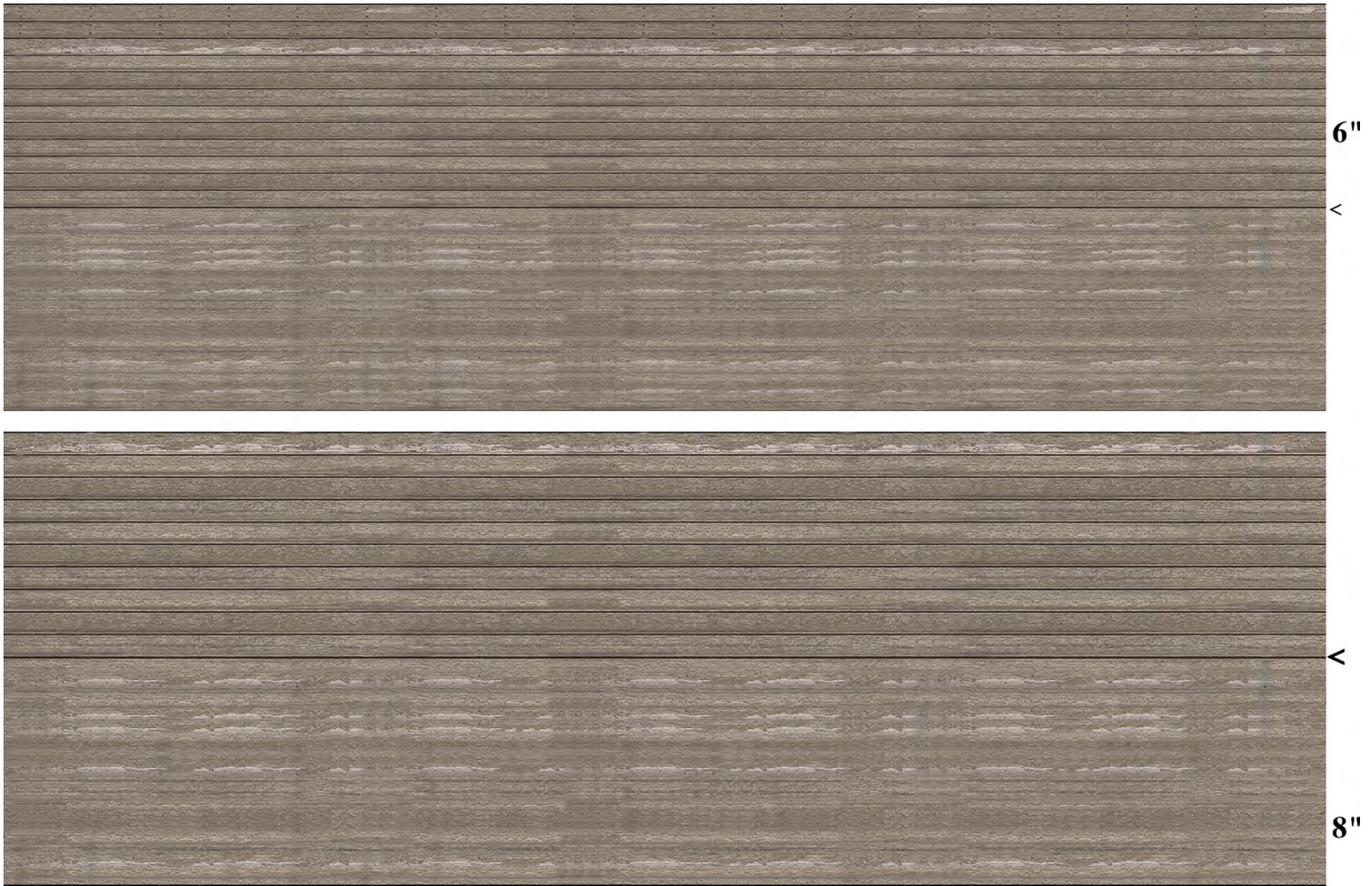
Small stock of 6" & 8" boards (right). Fold each on line between marked boards and plain area for double-sided timber boards.



Moreton Mill's River Depot - O Scale (1:48)

QldRailHeritage.com/mrqc,
© May 2015

0 4 8 12
Some textures © Clever Models llc or CG Textures



Double-sided boards, fold at < and glue; cut boards when dry. Unlined side resolves alignment problems when cutting with both sides lined.

Moreton Mill's River Depot - O Scale (1:48)

QldRailHeritage.com/mrqc, © May 2015
Some textures © Clever Models llc or CG Textures

