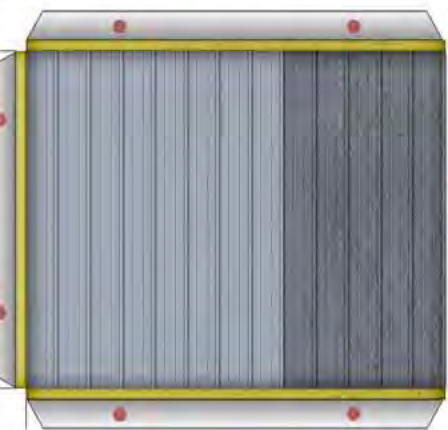


QldSawtooth Roof Factory, O scale 1:48

0 5 10 15 20

Non-commercial use only © Lynn Zelmer, 2016; Modelling the Railways of Queensland Convention: QldRailHeritage.com/mrqc



Doors and windows © sourced from Clever Models plc (O scale big mill, Steel Industrial CD). CI texture (walls, including base weeds, and roof) created from detail photos of Boldeman's Soaps, Rockhampton, prior to demolition.



This is a small industrial building with a typical sawtooth type roof system providing light and ventilation. It's intended as a minimum depth (4 scale feet) background model but is easily kitbashed into a larger building or even a full depth model.

One simple change is to add a two story office cum showroom on the right hand end.

These outlines are templates for cutting foamcore or other support materials. Add wrap around tabs as required when cutting out texture components and trim to butt joints when joining sections. The building can be lengthened by adding more bays, with or without doors and windows.

The reduced size image below shows an assembled side view with wrap around sections for the front and back.



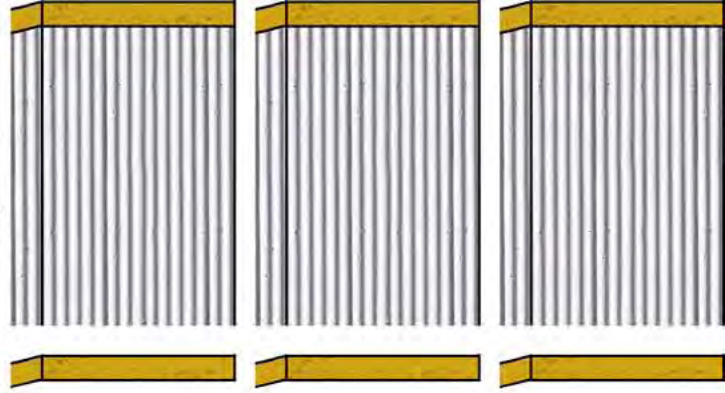
QldSawtooth Roof Factory, O scale 1:48

0 5 10 15 20

Non-commercial use only © Lynn Zelmer, 2016; Modelling the Railways of Queensland Convention: QldRailHeritage.com/mrqc



Trim to fit vertical face and install before main side textures. Similarly install horizontal eave overlay prior to main side eave overlay.



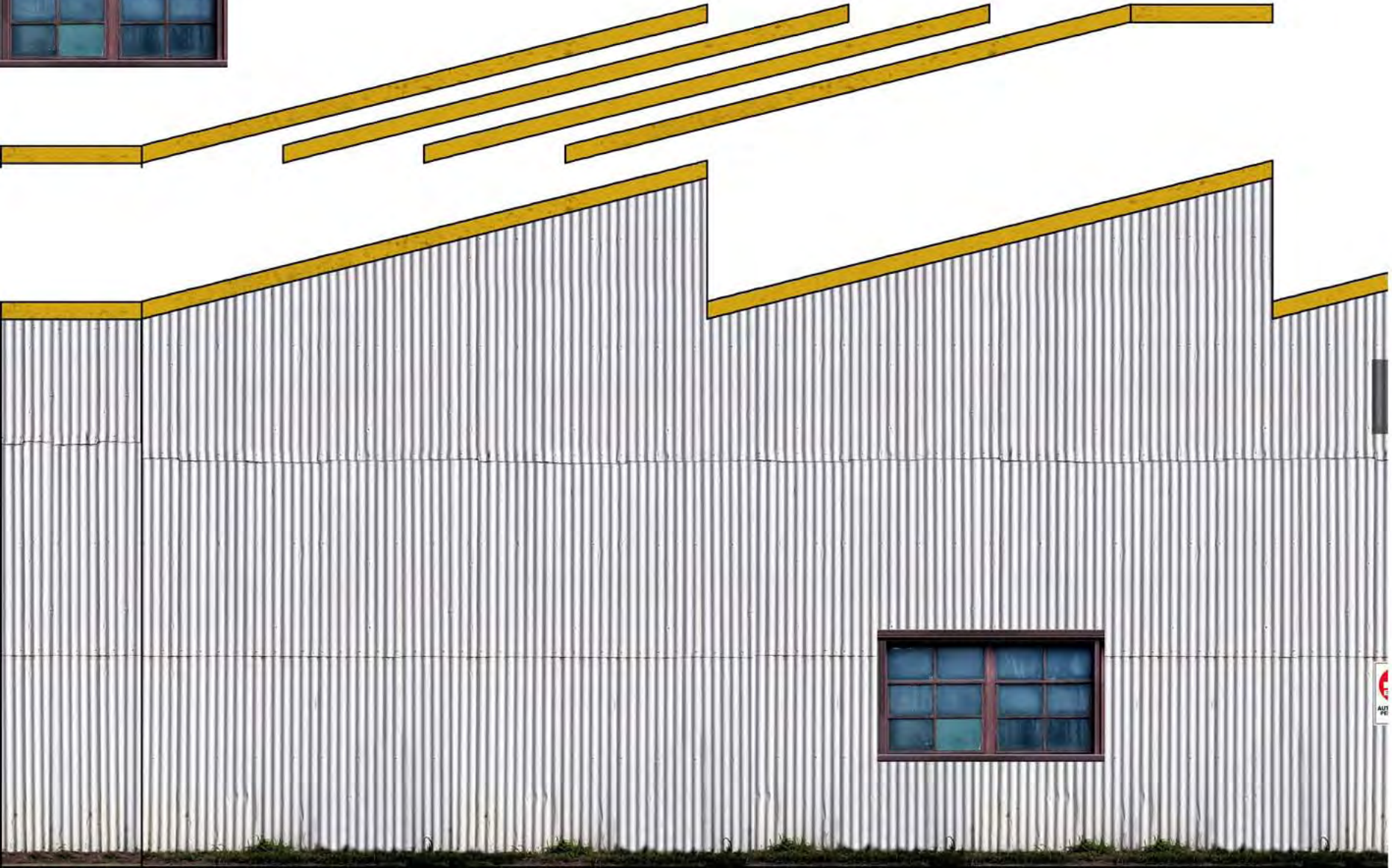
HAYES & SONS ENGINEERING



QldSawtooth Roof Factory, O scale 1:48

0 5 10 15 20

Non-commercial use only © Lynn Zelmer, 2016; Modelling the Railways of Queensland Convention: QldRailHeritage.com/mrqc



ALT
PC

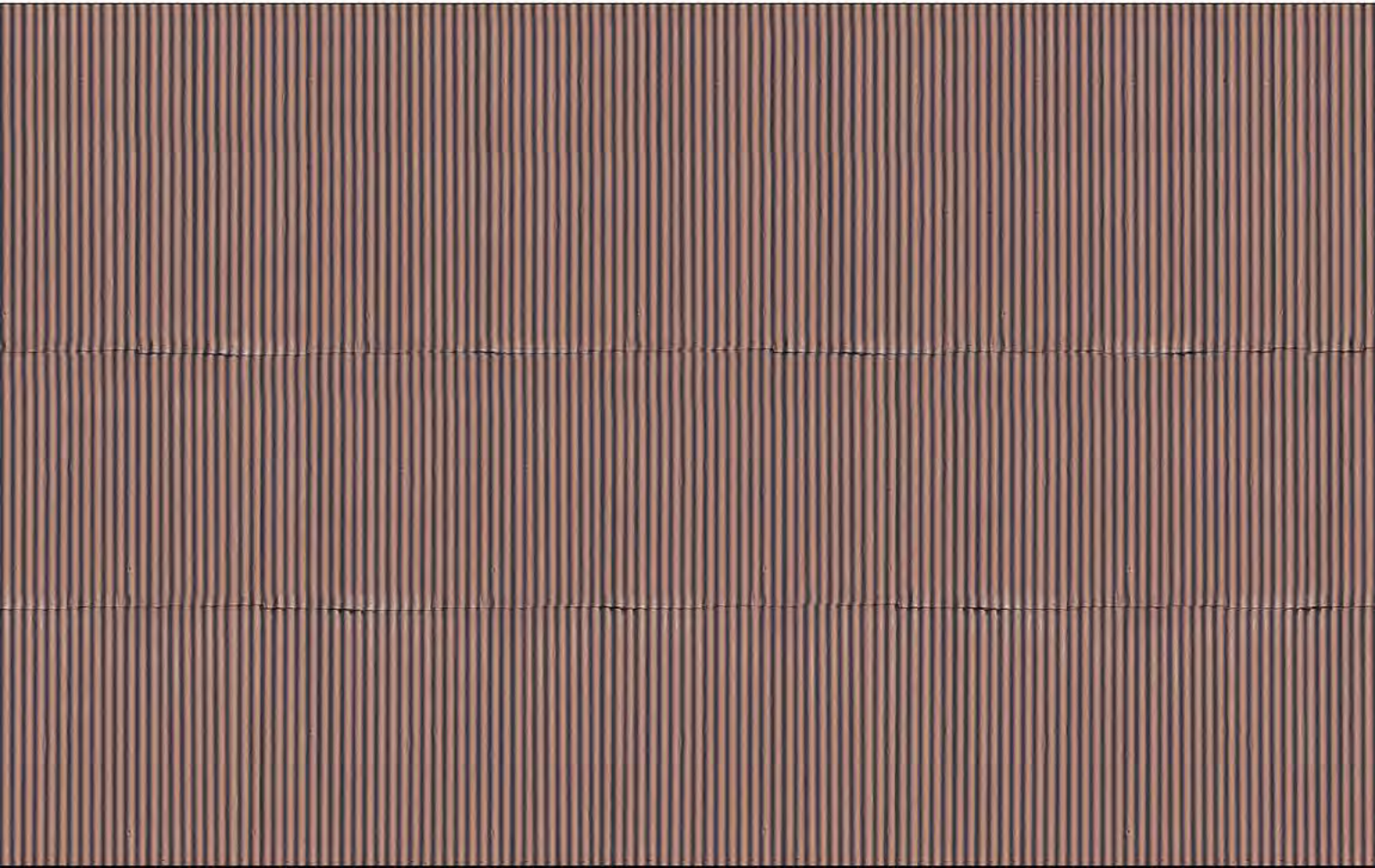
QldSawtooth Roof Factory, O scale 1:48

0 5 10 15 20

Non-commercial use only © Lynn Zelmer, 2016; Modelling the Railways of Queensland Convention: QldRailHeritage.com/mrqc

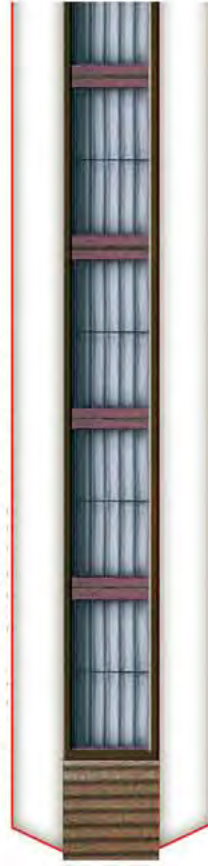
Partially restored heritage building (right) in Rockhampton which inspired this model. The front retains the original CI sheeting; the roof and other walls have been upgraded with more modern materials, presumably to minimise potential future cyclone damage.

Roofing material: trim to size as needed and fit in place.



Corrugated Iron from Boldemans Soaps building, Rockhampton, 24 Jul 2012

Sample section of Clever Models louvre-type ventilator (O scale steel mill building, roof vent, Steel Industrial CD), potentially suitable for vertical face of saw tooth section if making full depth model.



QldSawtooth Roof Factory, O scale 1:48

0 5 10 15 20

Non-commercial use only © Lynn Zelmer, 2016; Modelling the Railways of Queensland Convention: QldRailHeritage.com/mrqc

CI Siding: Cut to size and add windows, doors, etc., for full depth building. Use Clever Models plc louvre type vents or windows for upper vertical face, window/door alternatives, air conditioners and other details.

