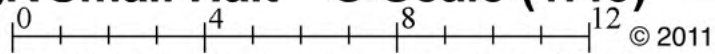


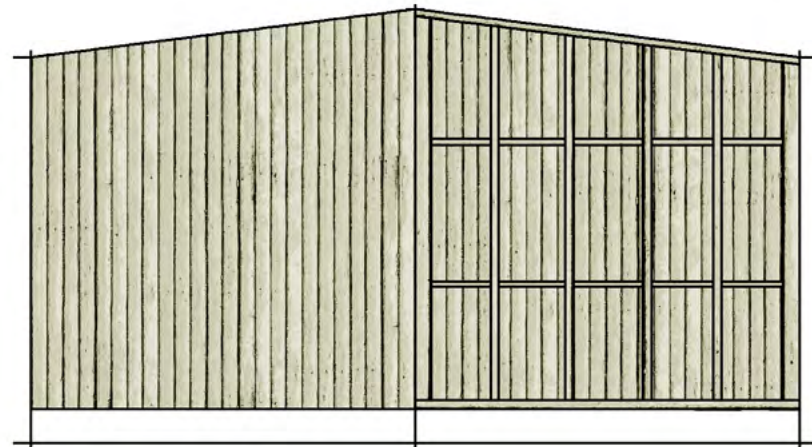
QR Small Halt - O Scale (1:48)

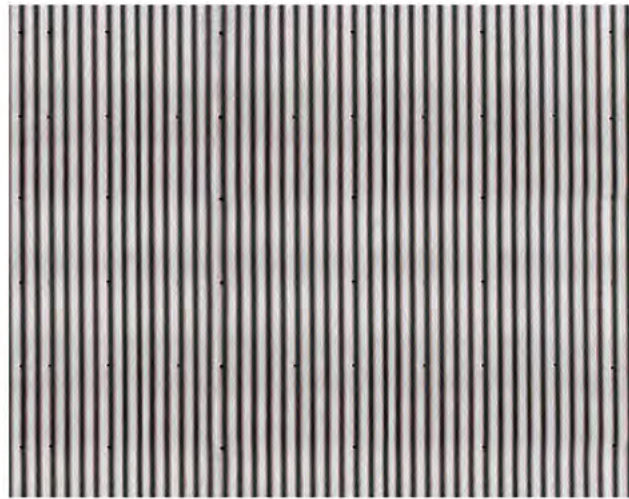
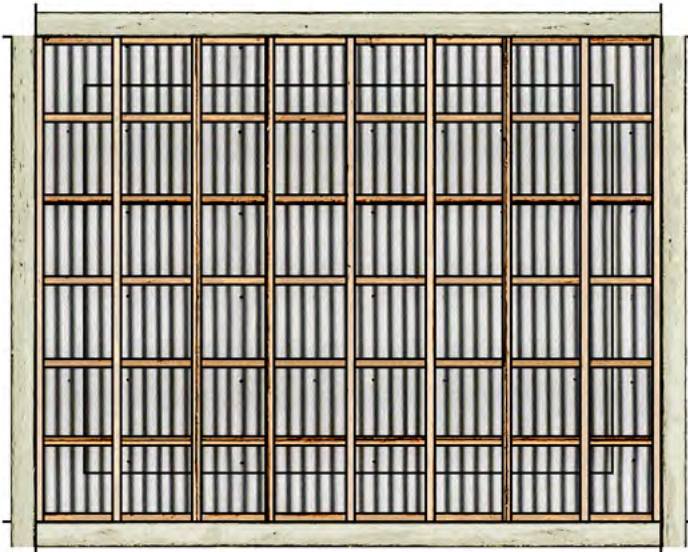


This photorealistic kit is based on a conventional © LadNDad card kit & uses textures © Clever Models plc. QldRailHeritage.com/mrqc



Roof side and front trim boards, cut to fit





Side trim boards, both interior and exterior, must be trimmed for width and the correct angle for the sloping roof.

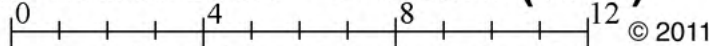
Corrugated roof should overhang the under roof sufficiently for the exterior trim boards to be applied under.

The floor must be trimmed to fit inside the shelter and extend slightly through the doorways -- holding the base of the walls rigid and square.

Add fold down glue tabs to 3 sides of floor but not at door openings; trim to fit inside walls



QR Small Halt - O Scale (1:48)



This photorealistic kit is based on a conventional © LadNDad card kit & uses textures © Clever Models plc. QldRailHeritage.com/mrqc

