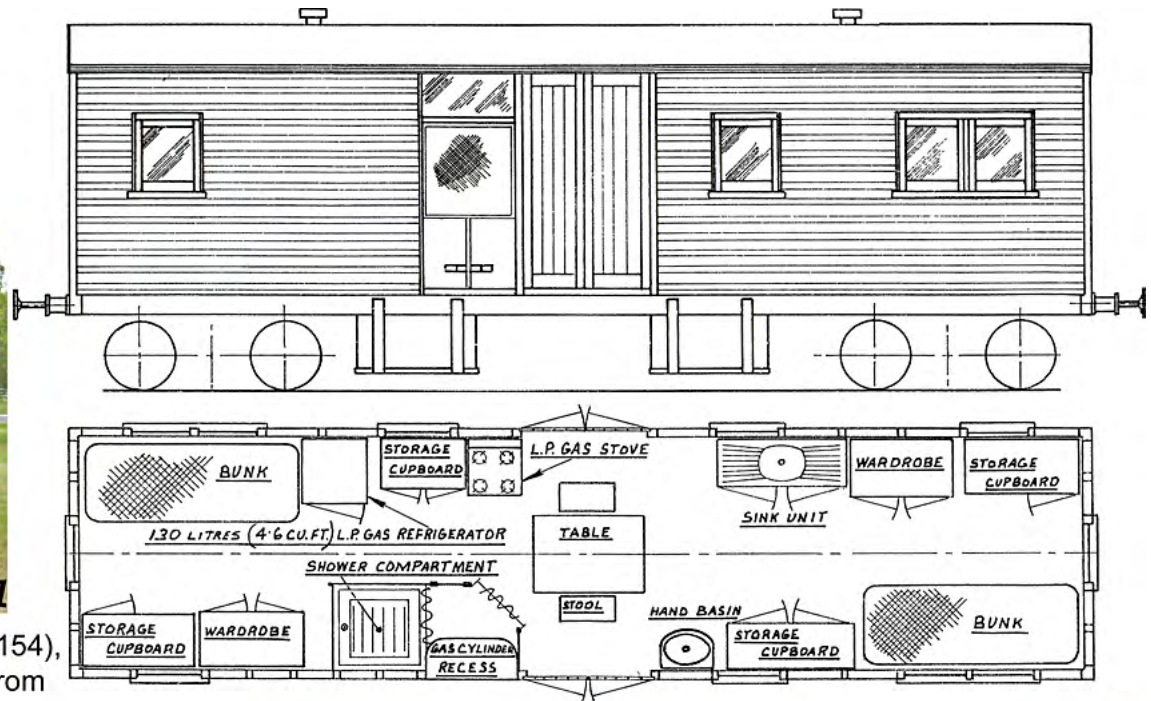




Standard 32' camp wagon being restored at Woodford (CW154), and QR 2 Man Camp Wagon (class CW) drawing adapted from QR wagon drawing 304 (Ipswich) of 1971. Windows, doors and other details varied with 2, 3 and 4 man capacity and which workshop constructed the wagon.

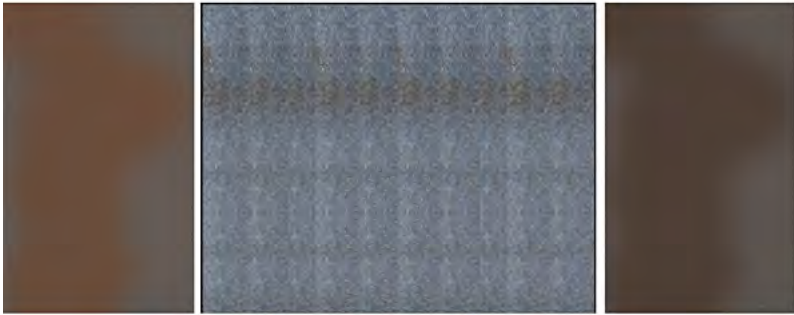


CW436 'Purga' at the Queensland Pioneer Steam Railway, Swanbank and in need of repairs. Note the flexible roof covering.

## QR Camp Wagon - HO Scale (1:87)



This kit contains some textures © Clever Models plc  
[OldRailHeritage.com/mrqc](http://OldRailHeritage.com/mrqc), © August 2012



Pivot Beams  
(Bolsters)



Queenpost location between bolts as marked, truss rods fasten behind angled brackets/bolts



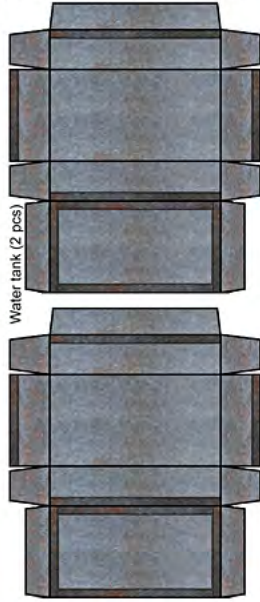
Use 4" x 10" limber textures (above left and below) for all underdeck stringers, etc. Fold around mat card centre and cut to length as needed.



Wrap around 'wings' (below) not needed if adding as 3D layering later in construction.



Water tank (2 pcs)



Fold/glue water tanks so that joins are down. Score angle iron on back before cutting from sheet and use to cover joins. Fold 90° lengthwise and fit/glue to a long side. Notch corner, fold around for 2nd side, etc. Score Tank support straps on back before cutting from sheet, mount piping if installed) and bogies have been fitted to ensure clearance. Install Queenposts/truss rods 12" from frame to underside.

Fit wire for piping and filler cap/chain (right) last.  
Rusty sheet metal (below left) is for 90° angle corners to reinforce underframe joins or for detailing (patched walls, etc.) as desired. See reference photos for installing hand brake mechanism. Brake components may be seen from both sides, thus need textures on both faces of most components.

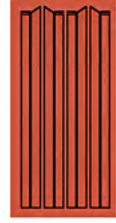
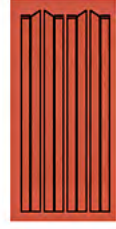
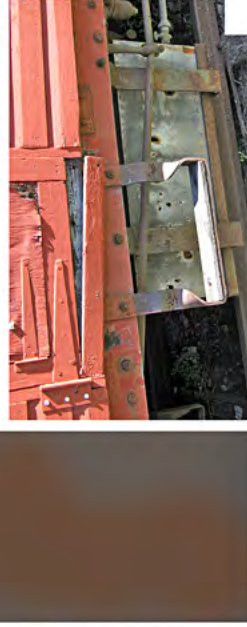
Form 0.8mm brass wire for couplings.



Score angle iron (above) on centre line and fit around base of water tank. Strap iron (below) wraps vertically to hang tank in place. Tank can actually be fixed to underframe, rather than hanging loose as on prototype.

Metal/limber for steps

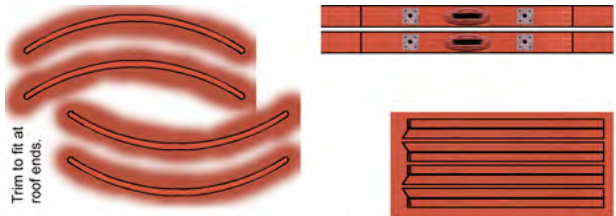
Fold/glue metal strip back-to-back for gluing, then bend to shape for step bracket. Add fixing bolts with dark pencil, fit and finish by gluing limber step in place. Centre under single door, or under right hand side of double door.



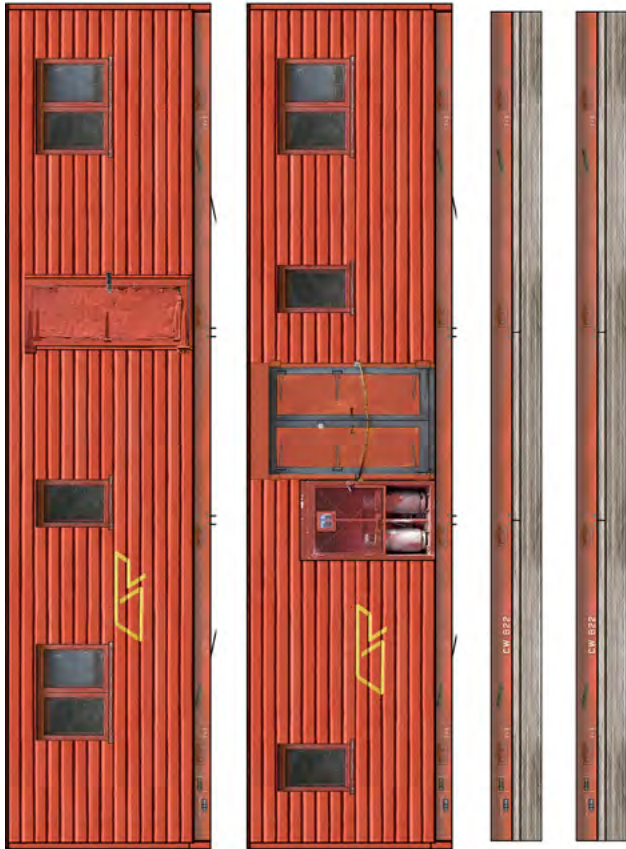
## QR Camp Wagon - HO Scale (1:87)



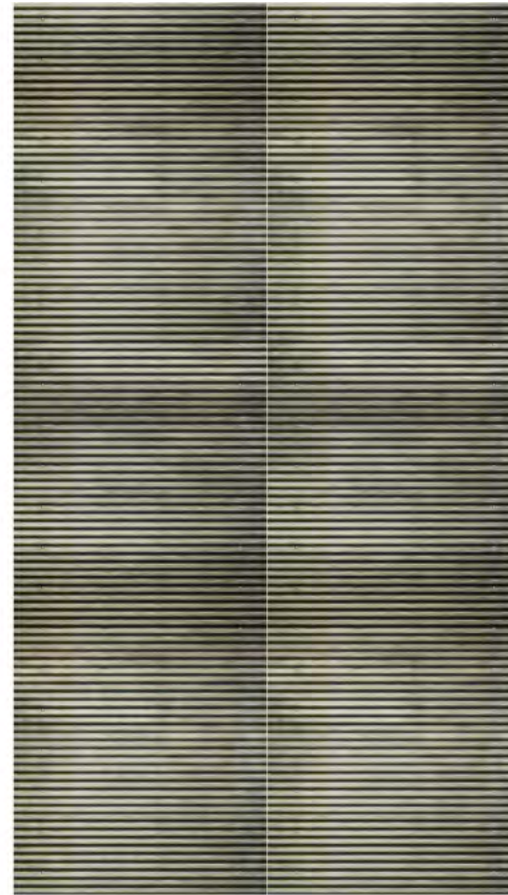
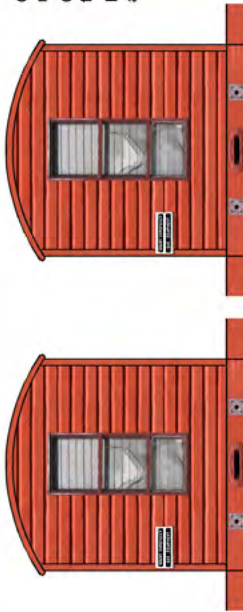
This kit contains some textures © Clever Models plc  
QldRailHeritage.com/mrqc, © August 2012



Trim to fit at roof ends.



Queenpost location marked on sole bars (above left). Truss rods fasten behind angled fastener/bolts on solebar. Corner trim (above) is roughly 25% oversize and will require trimming to fit corners after walls are assembled. Heads' 'wings' on ends (left) may be omitted if being added later with headstock overlay (above right).



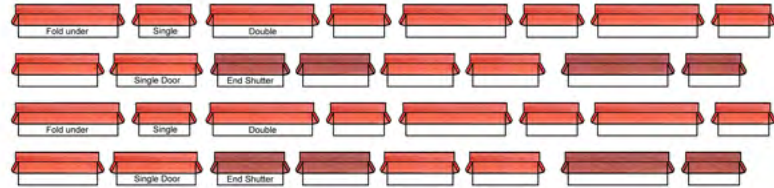
Timber strips (above) for finishing top of side wall. Metal (left and below) for reinforcing underframe, etc.



Template for interior bracing, trim to fit. At least three, and perhaps as many as six, will be need to support walls/roof.



Extra doors, windows and hardware (hinges hasps, cast iron end fittings, etc.) for creating multi-layer 3D effect. Windows could be cut out for glass and/or window screening, and extra louvres cut for individual louvres.



Window shade design (above) worked for O scale, some adaptation may be require as rescaled for HO use.



Metal and timber components for side steps, cut and bend (twist) to fit.

# QR Camp Wagon - HO Scale (1:87)



This kit contains some textures © Clever Models plc  
 QldRailHeritage.com/mrqc, © August 2012