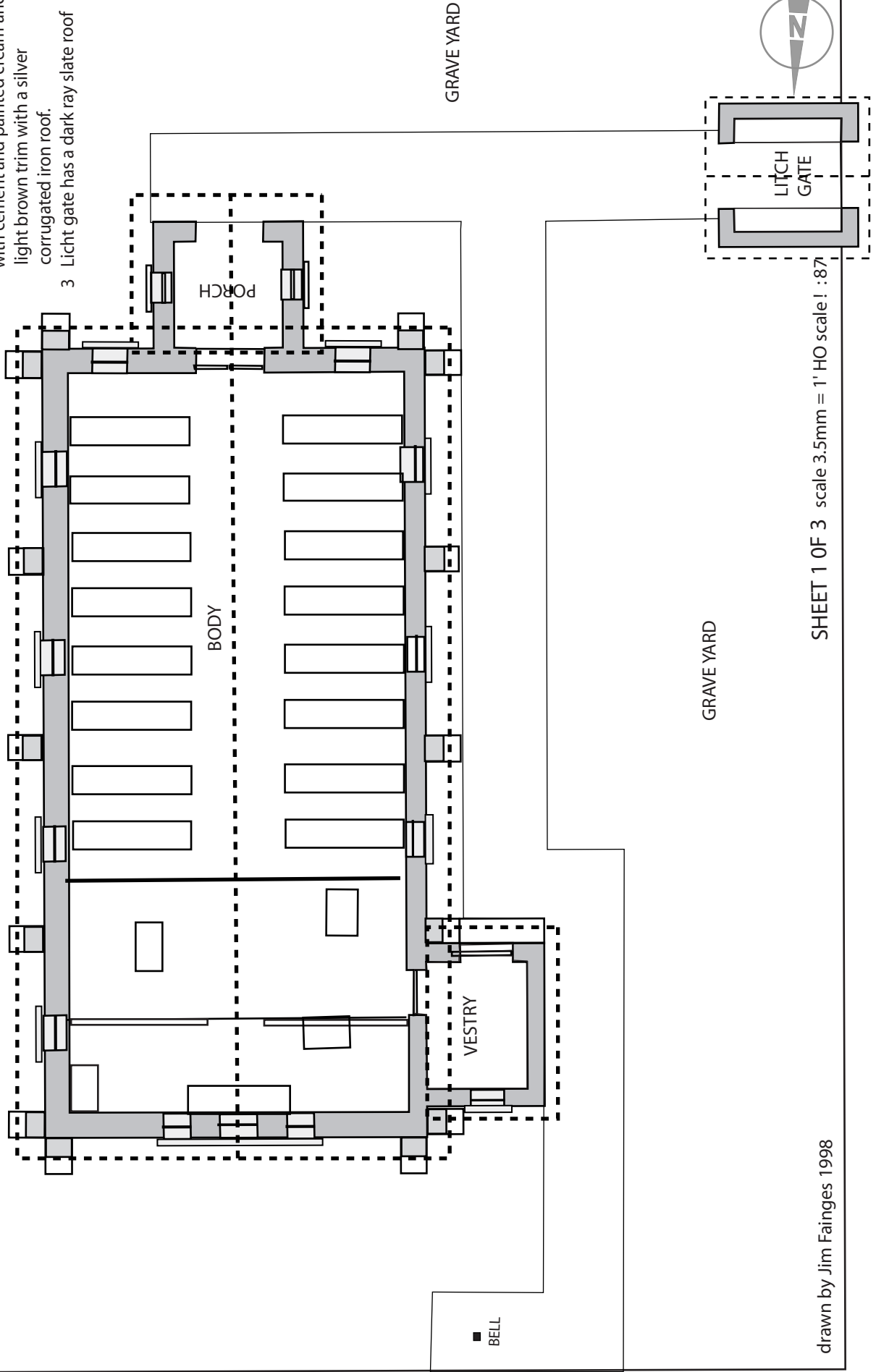


St MATTHEW'S ANGLICAN CHURCH GROVELY

FLOOR PLAN

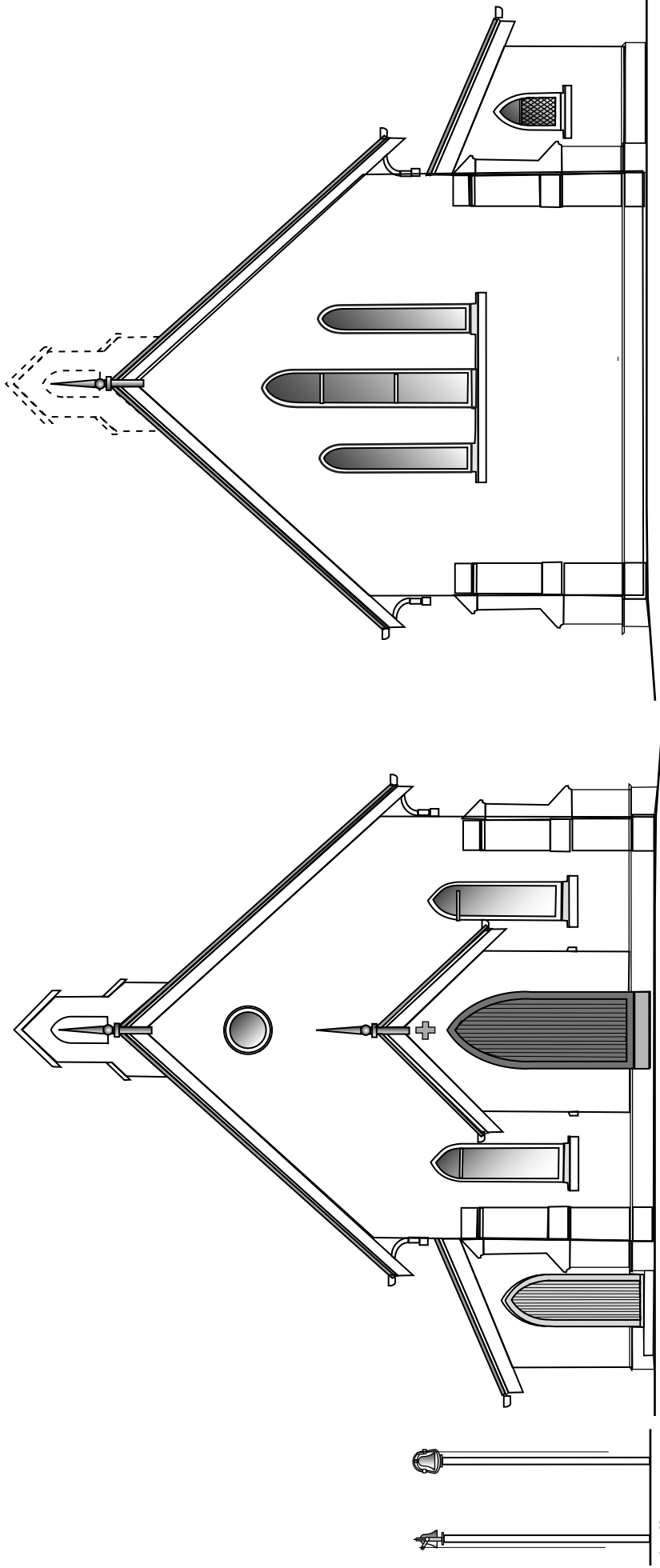
- NOTES:-
1. This church is one of the oldest church buildings in the Brisbane area
 2. The construction is brick rendered with cement and painted cream and light brown trim with a silver corrugated iron roof.
 3. Light gate has a dark ray slate roof.



SHEET 1 OF 3 scale 3.5mm = 1' HO scale! :87

drawn by Jim Fainges 1998

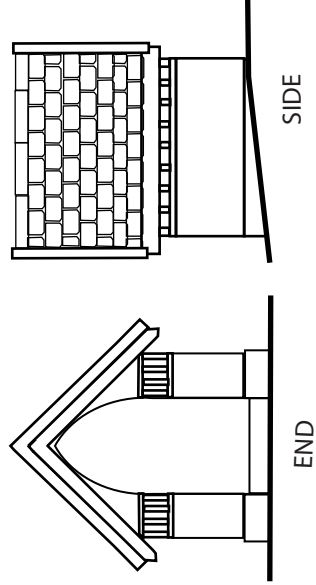
St MATTHEW'S ANGLICAN CHURCH GROVELY



bell on post

SOUTH ELEVATION

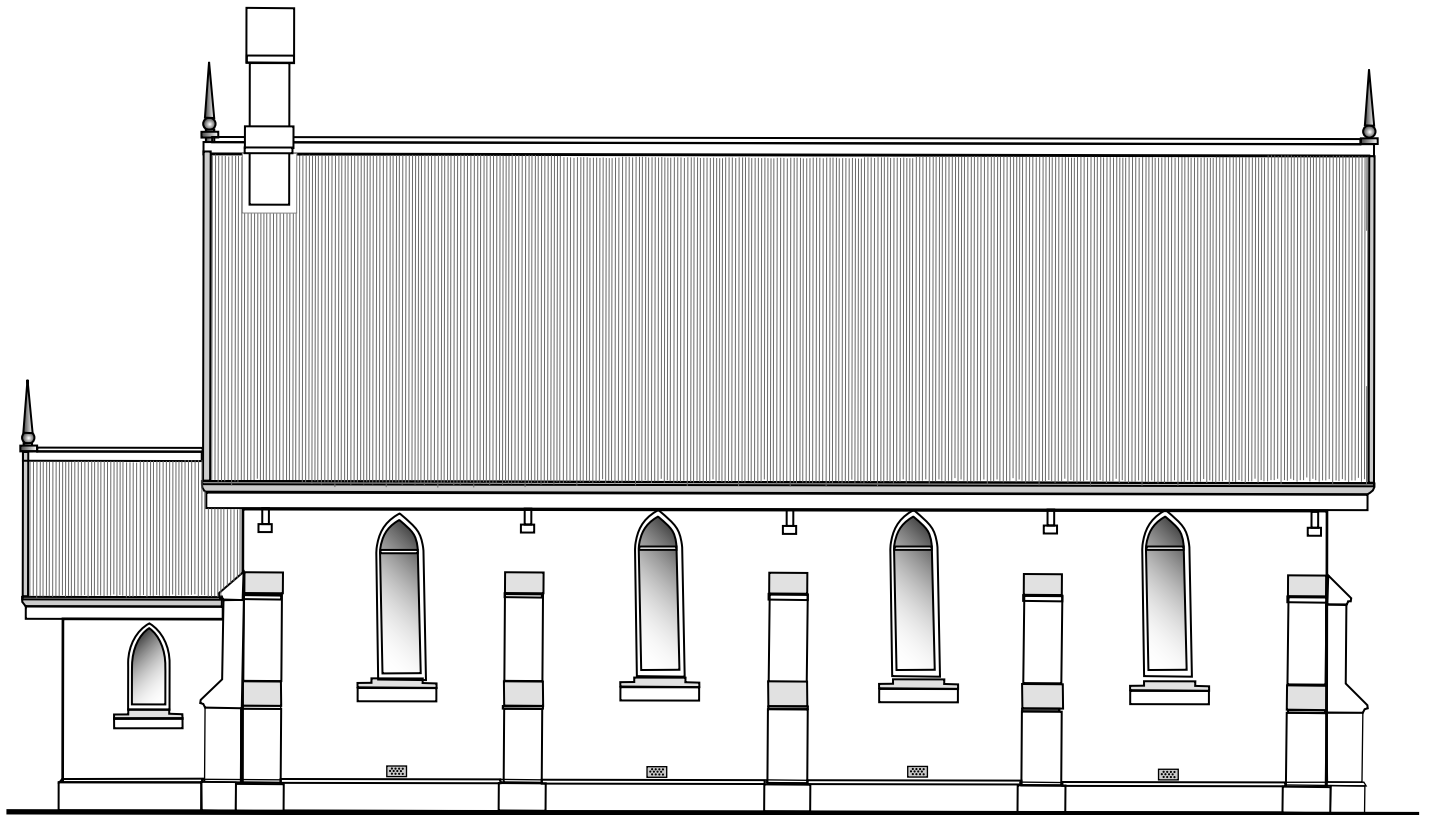
NORTH ELEVATION



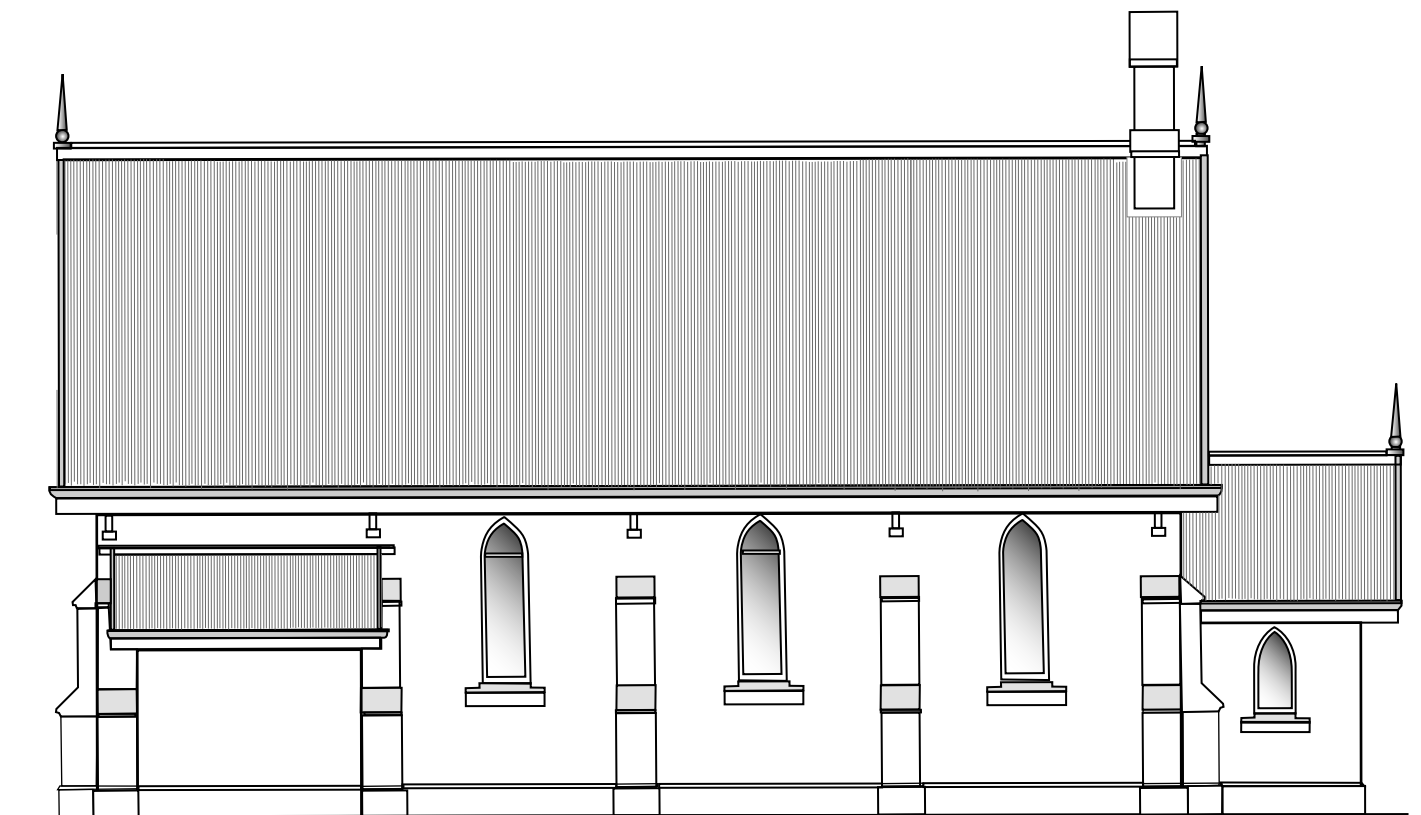
END

SIDE

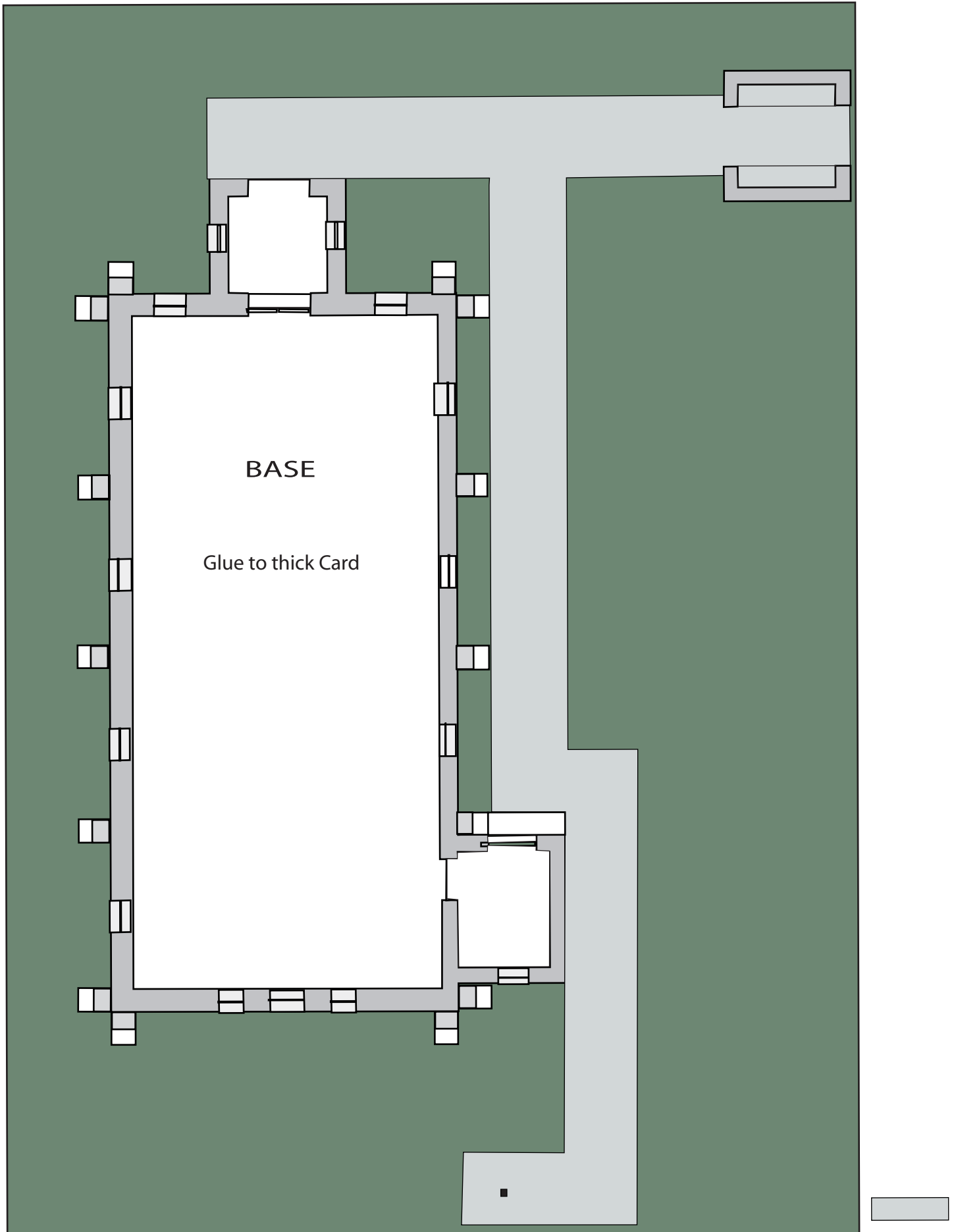
LIGHT GATE



EAST ELEVATION



WEST ELEVATION



Grovley Church

HO Scale 1 : 87

Sheet2

