

Captions/Proof Sheets for 100 Alberta Coal Branch & related images to accompany CD and slides; A C Lynn Zelmer, Photographer

This is a selection of 100 35mm colour slides taken from 1964 through 1978 primarily related to the Alberta Coal Branch and nearby environs. Some images outside this region have been included because of the photographer's image filing system. These images scanned 2006 by the photographer prior to slides being deposited with the Alberta Provincial Archives.

As this index is being prepared it is expected that an image (lz_47) from the first Alberta Coal Branch CD will also be included on the CD. This image was rescanned by the photographer due to the scanning error on the Kodak PhotoCD.

Slides sorted by caption

lz_174 BC: Yellowhead scene. 1970
lz_175 BC: Yellowhead, sawmill along CNR track. 1970
lz_176 BC: Yellowhead, sawmill on water, long shot. 1970
lz_177 BC: Yellowhead, sawmill on water, medium shot. 1970
lz_117 CNR 208372 in work service, Robb. 9/70
lz_116 CNR 67932 in work service, Robb. 9/70
lz_133 CNR Camrose: buildings. 1973
lz_134 CNR Camrose: buildings. 1973
lz_135 CNR Camrose: buildings. 1973
lz_137 CNR Camrose: feedmill. 1973
lz_136 CNR Camrose: station. 1973
lz_138 CNR Jasper: 6060 on display, side view. 5/64
lz_140 CNR Jasper: 6060 on display, side view. 5/64
lz_139 CNR Jasper: 6060 plaque. 5/64
lz_128 CNR Kamloops: yard view. 1970
lz_127 CNR water stand on Cadomin Branch. [May be a copy slide] 8/66
lz_141 CNR water tower. [Alberta or BC, duplicate slide] c 1964
lz_123 Coal Branch trestle. 1968
lz_129 Coal Branch: sawmill. 9/70
lz_130 Coal Branch: sawmill. 9/70
lz_131 Coal Branch: sawmill. 9/70
lz_105 Coal Valley: 1970
lz_112 Coal Valley: coal seam. 1970
lz_113 Coal Valley: East. 1970
lz_101 Coal Valley: gullies. 1970
lz_102 Coal Valley: gully. 1970
lz_108 Coal Valley: North, loading. 1970
lz_107 Coal Valley: old house. 1970
lz_110 Coal Valley: old yard. 1970
lz_104 Coal Valley: old yards and loading area, and switchbacks. 1970
lz_109 Coal Valley: slag heap. 1970
lz_111 Coal Valley: slag heaps. 1970
lz_103 Coal Valley: weathered timber, 1970
lz_106 Coal Valley: wild strawberries. 1970

**Captions/Proof Sheets for 100 Alberta Coal Branch & related images
to accompany CD and slides; A C Lynn Zelmer, Photographer**

- lz_126 Coalspur: nearby coal mine, coal wagon. [May be a copy slide] 8/66
- lz_124 Coalspur: nearby coal mine, track and coal wagon. [May be a copy slide] 8/66
- lz_122 Coalspur: nearby coal mine. 8/66
- lz_125 Coalspur: station, 3/4 view. 1968
- lz_132 CPR Canmore station. c 1970
- lz_183 Crown Zellerbach, Elk Falls Division: bleached pulp for boxes; will be pushed onto conveyor for loading on ships to go to USA for manufacture of boxes. 5/64
- lz_192 Crown Zellerbach, Elk Falls Division: Finished paper on steel core about to be put on cardboard core and cut to width. 5/64
- lz_193 Crown Zellerbach, Elk Falls Division: finished paper roll on scales. 5/64
- lz_182 Crown Zellerbach, Elk Falls Division: out end of paper roll being inspected for 'bubbles'. 5/64
- lz_181 Crown Zellerbach, Elk Falls Division: paper roll being wrapped and sealed. 5/64
- lz_185 Crown Zellerbach, Elk Falls Division: sign. 5/64
- lz_184 Crown Zellerbach, Elk Falls Division: sign. 8/65
- lz_151 Edmonton: BC 'Cook Bicentennial' train, 2860 (long shot) and siding. 6/78
- lz_160 Edmonton: BC 'Cook Bicentennial' train, 2860 (Royal Hudson). 6/78
- lz_153 Edmonton: BC 'Cook Bicentennial' train, 2860 arriving. 6/78
- lz_150 Edmonton: BC 'Cook Bicentennial' train, 2860 cab. 6/78
- lz_156 Edmonton: BC 'Cook Bicentennial' train, 2860 front. 6/78
- lz_159 Edmonton: BC 'Cook Bicentennial' train, 2860 tender. 6/78
- lz_157 Edmonton: BC 'Cook Bicentennial' train, 2860. 6/78
- lz_158 Edmonton: BC 'Cook Bicentennial' train, 2860. 6/78
- lz_152 Edmonton: BC 'Cook Bicentennial' train, Amy (right) and Jennifer Zelmer. 6/78
- lz_155 Edmonton: BC 'Cook Bicentennial' train, Amy (right) and Jennifer Zelmer. 6/78
- lz_149 Edmonton: BC 'Cook Bicentennial' train. 6/78
- lz_154 Edmonton: BC 'Cook Bicentennial' train. 6/78
- lz_161 Edmonton: BC 'Cook Bicentennial' train. 6/78
- lz_166 Hillcrest Lumber building. 9/73
- lz_167 Hillcrest Lumber building. 9/73
- lz_169 Hillcrest Lumber building. 9/73
- lz_170 Hillcrest Lumber building. 9/73
- lz_168 Hillcrest Lumber buildings/mill across lake. 9/64
- lz_172 Hillcrest Lumber cutting with track. 9/73
- lz_173 Hillcrest Lumber cutting with track. 9/73
- lz_171 Hillcrest Lumber where mill used to be. 9/73
- lz_197 Hillcrest Lumber: grading table. 8/64
- lz_195 Hillcrest Lumber: log pond on lake. 8/64
- lz_194 Hillcrest Lumber: log pond, small tug for moving logs and modern truck. [L Ross McIlveen photographer] 8/64
- lz_189 Hillcrest Lumber: log pond. 8/64
- lz_191 Hillcrest Lumber: log truck unloading. [L Ross McIlveen photographer] 8/64
- lz_186 Hillcrest Lumber: lumber sorting room. 8/64
- lz_190 Hillcrest Lumber: sawdust burner. 8/64

**Captions/Proof Sheets for 100 Alberta Coal Branch & related images
to accompany CD and slides; A C Lynn Zelmer, Photographer**

- lz_115 Mercoal: house ruins. 1970
- lz_114 Mercoal: houses. 1970
- lz_198 North Vancouver: barge unloading. 8/64
- lz_199 North Vancouver: barges (sawdust left, chips right) to be taken to pulp mill.
[duplicate slide] 8/64
- lz_196 North Vancouver: log chain from pond/river. 8/64
- lz_188 North Vancouver: lumber piles and sawdust burning buildings (ie boiler). c 8/64
- lz_200 North Vancouver: lumber piles, sawdust burner in rear. 8/64
- lz_187 North Vancouver: wharf and barge. 8/64
- lz_179 Northern Alberta: log dump and sawdust burner. [duplicate slide, may be Coal
Branch, c1964]
- lz_180 Northern Alberta: sawdust pile. [duplicate slide, may be Coal Branch, c1964]
- lz_178 Northern Alberta: sawn lumber grading and sorting table. [duplicate slide, may be
Coal Branch, c1964]
- lz_121 Robb: tunnel interior. 1970
- lz_120 Robb: tunnel on Coal Branch, exterior. 8/66
- lz_119 Robb: tunnel, 1912 concrete date. 1968
- lz_118 Robb: tunnel, long shot, exterior. 1968
- lz_142 Thorsby: Feed mill along one of the branch lines south-west of Edmonton. 6/71
- lz_143 Thorsby: Feed mill along one of the branch lines south-west of Edmonton. 6/71
- lz_144 Thorsby: Feed mill along one of the branch lines south-west of Edmonton. 6/71
- lz_145 Thorsby: Feed mill along one of the branch lines south-west of Edmonton. 6/71
- lz_146 Thorsby: Feed mill along one of the branch lines south-west of Edmonton. 6/71
- lz_147 Thorsby: Feed mill along one of the branch lines south-west of Edmonton. 6/71
- lz_148 Thorsby: Feed mill along one of the branch lines south-west of Edmonton. 6/71
- lz_164 Vancouver: small 2x4 mill, band saw dolly . 8/64
- lz_163 Vancouver: small 2x4 mill, band saw dolly or carriage. 8/64
- lz_162 Vancouver: small 2x4 mill, saw carriage [duplicate slide]. 8/64
- lz_165 Vancouver: small 2x4 mill, sawdust storage house. [duplicate slide]. 8/64

Slides sorted numerically

- lz_101 Coal Valley: gullies. 1970
- lz_102 Coal Valley: gully. 1970
- lz_103 Coal Valley: weathered timber, 1970
- lz_104 Coal Valley: old yards and loading area, and switchbacks. 1970
- lz_105 Coal Valley: 1970
- lz_106 Coal Valley: wild strawberries. 1970
- lz_107 Coal Valley: old house. 1970
- lz_108 Coal Valley: North, loading. 1970
- lz_109 Coal Valley: slag heap. 1970
- lz_110 Coal Valley: old yard. 1970
- lz_111 Coal Valley: slag heaps. 1970
- lz_112 Coal Valley: coal seam. 1970

**Captions/Proof Sheets for 100 Alberta Coal Branch & related images
to accompany CD and slides; A C Lynn Zelmer, Photographer**

- lz_113 Coal Valley: East. 1970
- lz_114 Mercoal: houses. 1970
- lz_115 Mercoal: house ruins. 1970
- lz_116 CNR 67932 in work service, Robb. 9/70
- lz_117 CNR 208372 in work service, Robb. 9/70
- lz_118 Robb: tunnel, long shot, exterior. 1968
- lz_119 Robb: tunnel, 1912 concrete date. 1968
- lz_120 Robb: tunnel on Coal Branch, exterior. 8/66
- lz_121 Robb: tunnel interior. 1970
- lz_122 Coalspur: nearby coal mine. 8/66
- lz_123 Coal Branch trestle. 1968
- lz_124 Coalspur: nearby coal mine, track and coal wagon. [May be a copy slide] 8/66
- lz_125 Coalspur: station, 3/4 view. 1968
- lz_126 Coalspur: nearby coal mine, coal wagon. [May be a copy slide] 8/66
- lz_127 CNR water stand on Cadomin Branch. [May be a copy slide] 8/66
- lz_128 CNR Kamloops: yard view. 1970
- lz_129 Coal Branch: sawmill. 9/70
- lz_130 Coal Branch: sawmill. 9/70
- lz_131 Coal Branch: sawmill. 9/70
- lz_132 CPR Canmore station. c 1970
- lz_133 CNR Camrose: buildings. 1973
- lz_134 CNR Camrose: buildings. 1973
- lz_135 CNR Camrose: buildings. 1973
- lz_136 CNR Camrose: station. 1973
- lz_137 CNR Camrose: feedmill. 1973
- lz_138 CNR Jasper: 6060 on display, side view. 5/64
- lz_139 CNR Jasper: 6060 plaque. 5/64
- lz_140 CNR Jasper: 6060 on display, side view. 5/64
- lz_141 CNR water tower. [Alberta or BC, duplicate slide] c 1964
- lz_142 Thorsby: Feed mill along one of the branch lines south-west of Edmonton. 6/71
- lz_143 Thorsby: Feed mill along one of the branch lines south-west of Edmonton. 6/71
- lz_144 Thorsby: Feed mill along one of the branch lines south-west of Edmonton. 6/71
- lz_145 Thorsby: Feed mill along one of the branch lines south-west of Edmonton. 6/71
- lz_146 Thorsby: Feed mill along one of the branch lines south-west of Edmonton. 6/71
- lz_147 Thorsby: Feed mill along one of the branch lines south-west of Edmonton. 6/71
- lz_148 Thorsby: Feed mill along one of the branch lines south-west of Edmonton. 6/71
- lz_149 Edmonton: BC 'Cook Bicentennial' train. 6/78
- lz_150 Edmonton: BC 'Cook Bicentennial' train, 2860 cab. 6/78
- lz_151 Edmonton: BC 'Cook Bicentennial' train, 2860 (long shot) and siding. 6/78
- lz_152 Edmonton: BC 'Cook Bicentennial' train, Amy (right) and Jennifer Zelmer. 6/78
- lz_153 Edmonton: BC 'Cook Bicentennial' train, 2860 arriving. 6/78
- lz_154 Edmonton: BC 'Cook Bicentennial' train. 6/78
- lz_155 Edmonton: BC 'Cook Bicentennial' train, Amy (right) and Jennifer Zelmer. 6/78

**Captions/Proof Sheets for 100 Alberta Coal Branch & related images
to accompany CD and slides; A C Lynn Zelmer, Photographer**

- lz_156 Edmonton: BC 'Cook Bicentennial' train, 2860 front. 6/78
- lz_157 Edmonton: BC 'Cook Bicentennial' train, 2860. 6/78
- lz_158 Edmonton: BC 'Cook Bicentennial' train, 2860. 6/78
- lz_159 Edmonton: BC 'Cook Bicentennial' train, 2860 tender. 6/78
- lz_160 Edmonton: BC 'Cook Bicentennial' train, 2860 (Royal Hudson). 6/78
- lz_161 Edmonton: BC 'Cook Bicentennial' train. 6/78
- lz_162 Vancouver: small 2x4 mill, saw carriage [duplicate slide]. 8/64
- lz_163 Vancouver: small 2x4 mill, band saw dolly or carriage. 8/64
- lz_164 Vancouver: small 2x4 mill, band saw dolly . 8/64
- lz_165 Vancouver: small 2x4 mill, sawdust storage house. [duplicate slide]. 8/64
- lz_166 Hillcrest Lumber building. 9/73
- lz_167 Hillcrest Lumber building. 9/73
- lz_168 Hillcrest Lumber buildings/mill across lake. 9/64
- lz_169 Hillcrest Lumber building. 9/73
- lz_170 Hillcrest Lumber building. 9/73
- lz_171 Hillcrest Lumber where mill used to be. 9/73
- lz_172 Hillcrest Lumber cutting with track. 9/73
- lz_173 Hillcrest Lumber cutting with track. 9/73
- lz_174 BC: Yellowhead scene. 1970
- lz_175 BC: Yellowhead, sawmill along CNR track. 1970
- lz_176 BC: Yellowhead, sawmill on water, long shot. 1970
- lz_177 BC: Yellowhead, sawmill on water, medium shot. 1970
- lz_178 Northern Alberta: sawn lumber grading and sorting table. [duplicate slide, may be Coal Branch, c1964]
- lz_179 Northern Alberta: log dump and sawdust burner. [duplicate slide, may be Coal Branch, c1964]
- lz_180 Northern Alberta: sawdust pile. [duplicate slide, may be Coal Branch, c1964]
- lz_181 Crown Zellerbach, Elk Falls Division: paper roll being wrapped and sealed. 5/64
- lz_182 Crown Zellerbach, Elk Falls Division: out end of paper roll being inspected for 'bubbles'. 5/64
- lz_183 Crown Zellerbach, Elk Falls Division: bleached pulp for boxes; will be pushed onto conveyor for loading on ships to go to USA for manufacture of boxes. 5/64
- lz_184 Crown Zellerbach, Elk Falls Division: sign. 8/65
- lz_185 Crown Zellerbach, Elk Falls Division: sign. 5/64
- lz_186 Hillcrest Lumber: lumber sorting room. 8/64
- lz_187 North Vancouver: wharf and barge. 8/64
- lz_188 North Vancouver: lumber piles and sawdust burning buildings (ie boiler). c 8/64
- lz_189 Hillcrest Lumber: log pond. 8/64
- lz_190 Hillcrest Lumber: sawdust burner. 8/64
- lz_191 Hillcrest Lumber: log truck unloading. [L Ross McIlveen photographer] 8/64
- lz_192 Crown Zellerbach, Elk Falls Division: Finished paper on steel core about to be put on cardboard core and cut to width. 5/64
- lz_193 Crown Zellerbach, Elk Falls Division: finished paper roll on scales. 5/64

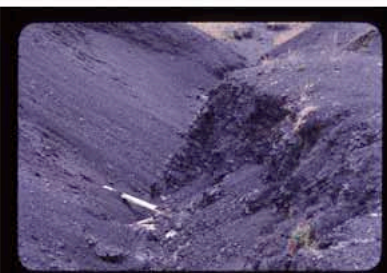
**Captions/Proof Sheets for 100 Alberta Coal Branch & related images
to accompany CD and slides; A C Lynn Zelmer, Photographer**

- lz_194 Hillcrest Lumber: log pond, small tug for moving logs and modern truck. [L Ross McIlveen photographer] 8/64
- lz_195 Hillcrest Lumber: log pond on lake. 8/64
- lz_196 North Vancouver: log chain from pond/river. 8/64
- lz_197 Hillcrest Lumber: grading table. 8/64
- lz_198 North Vancouver: barge unloading. 8/64
- lz_199 North Vancouver: barges (sawdust left, chips right) to be taken to pulp mill.
[duplicate slide] 8/64
- lz_200 North Vancouver: lumber piles, sawdust burner in rear. 8/64

**Captions/Proof Sheets for 100 Alberta Coal Branch & related images
to accompany CD and slides; A C Lynn Zelmer, Photographer**



lz_101.psd



lz_102.psd



lz_103.psd



lz_104.psd



lz_105.psd



lz_106.psd



lz_107.psd



lz_108.psd



lz_109.psd



lz_110.psd



lz_111.psd



lz_112.psd

**Captions/Proof Sheets for 100 Alberta Coal Branch & related images
to accompany CD and slides; A C Lynn Zelmer, Photographer**



lz_113.psd



lz_114.psd



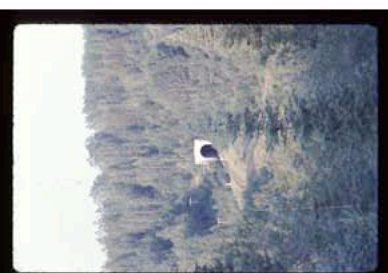
lz_115.psd



lz_116.psd



lz_117.psd



lz_118.psd



lz_119.psd



lz_120.psd



lz_121.psd



lz_122.psd



lz_123.psd



lz_124.psd

**Captions/Proof Sheets for 100 Alberta Coal Branch & related images
to accompany CD and slides; A C Lynn Zelmer, Photographer**



lz_125.psd



lz_126.psd



lz_127.psd



lz_128.psd



lz_129.psd



lz_130.psd



lz_131.psd



lz_132.psd



lz_133.psd



lz_134.psd



lz_135.psd



lz_136.psd

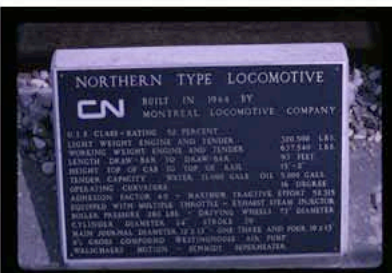
**Captions/Proof Sheets for 100 Alberta Coal Branch & related images
to accompany CD and slides; A C Lynn Zelmer, Photographer**



lz_137.psd



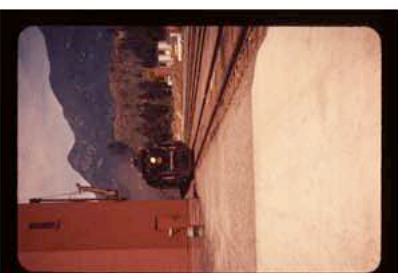
lz_138.psd



lz_139.psd



lz_140.psd



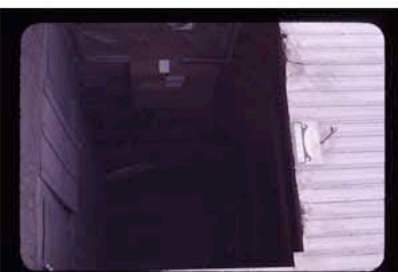
lz_141.psd



lz_142.psd



lz_143.psd



lz_144.psd



lz_145.psd



lz_146.psd



lz_147.psd



lz_148.psd

**Captions/Proof Sheets for 100 Alberta Coal Branch & related images
to accompany CD and slides; A C Lynn Zelmer, Photographer**



lz_149.psd



lz_150.psd



lz_151.psd



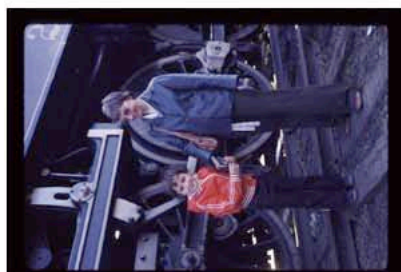
lz_152.psd



lz_153.psd



lz_154.psd



lz_155.psd



lz_156.psd



lz_157.psd



lz_158.psd



lz_159.psd



lz_160.psd

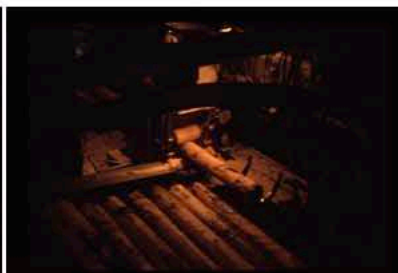
**Captions/Proof Sheets for 100 Alberta Coal Branch & related images
to accompany CD and slides; A C Lynn Zelmer, Photographer**



lz_161.psd



lz_162.psd



lz_163.psd



lz_164.psd



lz_165.psd



lz_166.psd



lz_167.psd



lz_168.psd



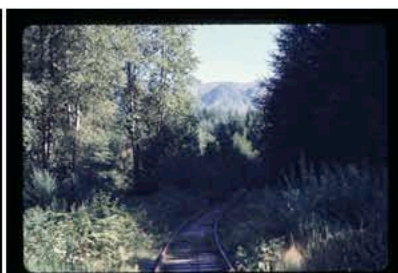
lz_169.psd



lz_170.psd



lz_171.psd

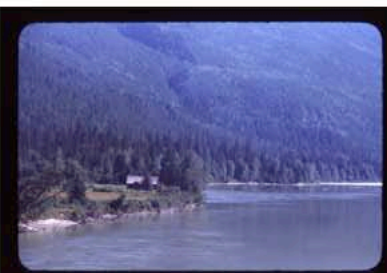


lz_172.psd

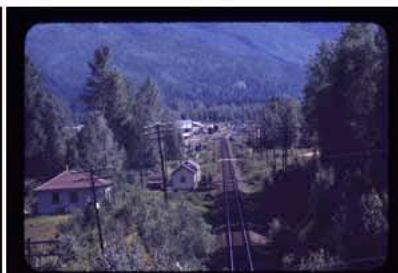
**Captions/Proof Sheets for 100 Alberta Coal Branch & related images
to accompany CD and slides; A C Lynn Zelmer, Photographer**



lz_173.psd



lz_174.psd



lz_175.psd



lz_176.psd



lz_177.psd



lz_178.psd



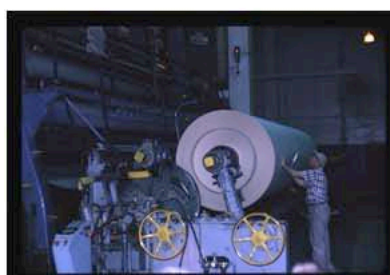
lz_179.psd



lz_180.psd



lz_181.psd



lz_182.psd



lz_183.psd



lz_184.psd

**Captions/Proof Sheets for 100 Alberta Coal Branch & related images
to accompany CD and slides; A C Lynn Zelmer, Photographer**



lz_185.psd



lz_186.psd



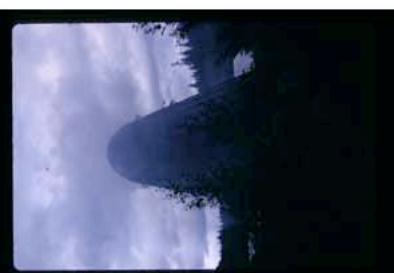
lz_187.psd



lz_188.psd



lz_189.psd



lz_190.psd



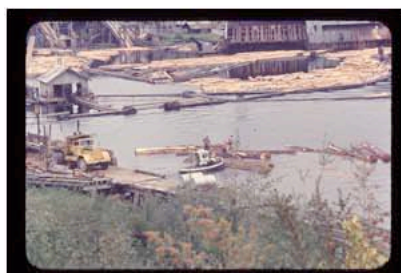
lz_191.psd



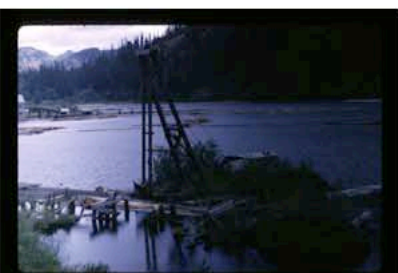
lz_192.psd



lz_193.psd



lz_194.psd



lz_195.psd



lz_196.psd

**Captions/Proof Sheets for 100 Alberta Coal Branch & related images
to accompany CD and slides; A C Lynn Zelmer, Photographer**



lz_197.psd



lz_198.psd



lz_199.psd



lz_200.psd