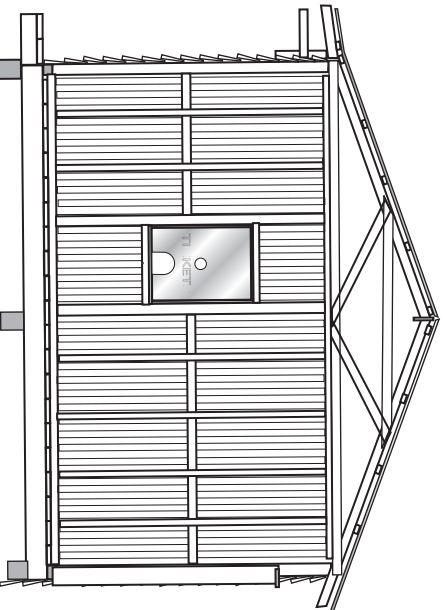
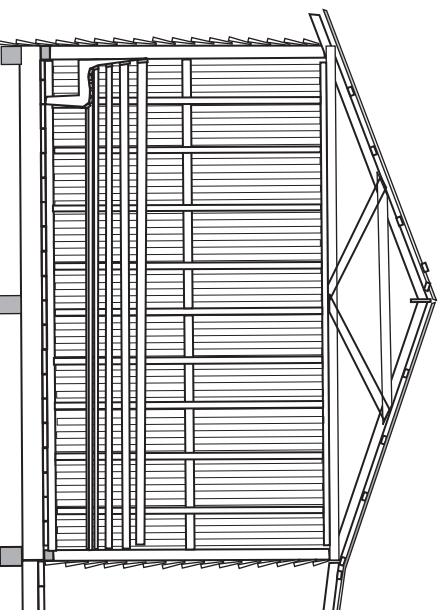


Drawing 4 of 4

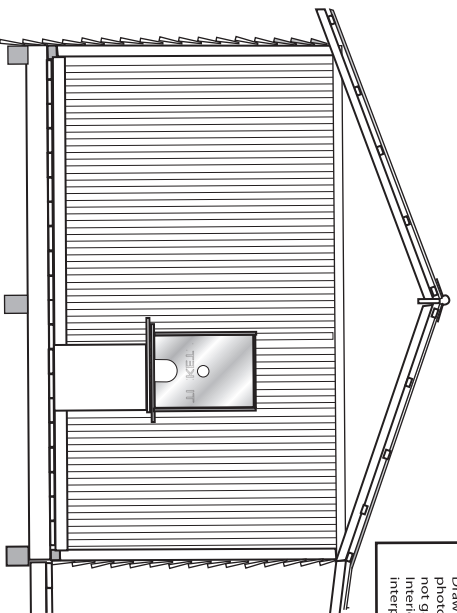


Cross Sections of waiting room B - B

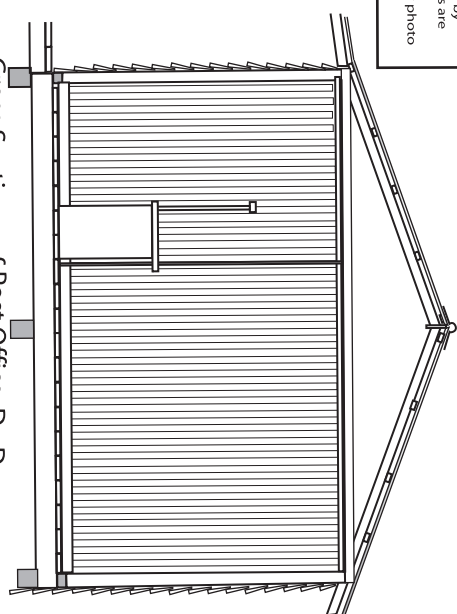


Cross Sections of waiting room C - C

**BUDERIM TRAMWAY
BUDERIM STATION**
Drawn from photographs and scaled by
photogrammetry therefore dimensions are
not guaranteed to be accurate
Interior arrangement of building is by photo
interpretation and oral history



Cross Sections of Office A - A



Cross Sections of Post Office D - D

BUDERIM TRAMWAY BUDERIM STATION



Drawn by Jim Fingoes with extra drawings by Garth Fraser
drawn December 2003