



## CWA 1922-2022

The Queensland CWA was formed in 1922 in Brisbane and had expanded statewide to 283 Branches with 13,000 members by 1928. It was registered as a Corporate Body in 1926, making it one of the oldest incorporated bodies in Queensland. Activities are driven by the interests of the local area and range from education, cooking and craft competitions, workshops, networking events, international study, fundraising and advocacy through, in 2022, over 220 branches and 3500 members.

Railfans and modellers and modellers may be most interested in the rest rooms near railway stations but the CWA has had more substantial facilities in major centres. Large towns and cities likely had room for dozens of women to stay for a few hours (breast feeding infants or waiting for the train, for example) or even overnight and some functioned as community centres. A smaller town would normally have a couple of private rooms, a kitchen/dining area, and toilet facilities (not necessarily within the building). Some also had a veranda or garden area for sitting outside.

Given the essentially self-funded nature of the local groups it is likely that many of the cottages were located on municipally-owned blocks of land, easily accessible from shops and professional offices. A man might end up at the local pub after a day in town but a woman/mother needed a nearby refuge while waiting for him.

The cottages themselves were likely constructed by volunteer labour and built to local housing standards. While the other cottages in the accompanying Narrow Gauge Downunder article have been fully sheathed at some time, the current Google Street View shows the CWA cottage in Biggenden never had had its exterior fully sheathed, still showing its framing on sides less obvious from public view. One consequence of such construction, especially should the structure become heritage listed, is that air conditioning is impractical.

This is not a competition model so I've not included framing for the underside of the roof and other details. It shouldn't be visible with the selective depth compression used for the low profile model and hopefully would be hidden by the fascia board on a full model. And as with all such model roofs, construction gaps between each side are hidden by hip capping strips.



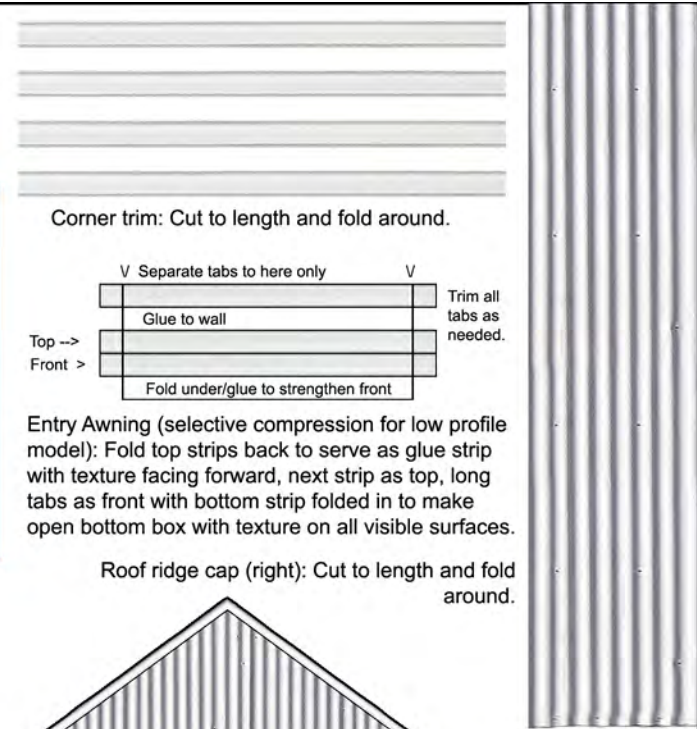
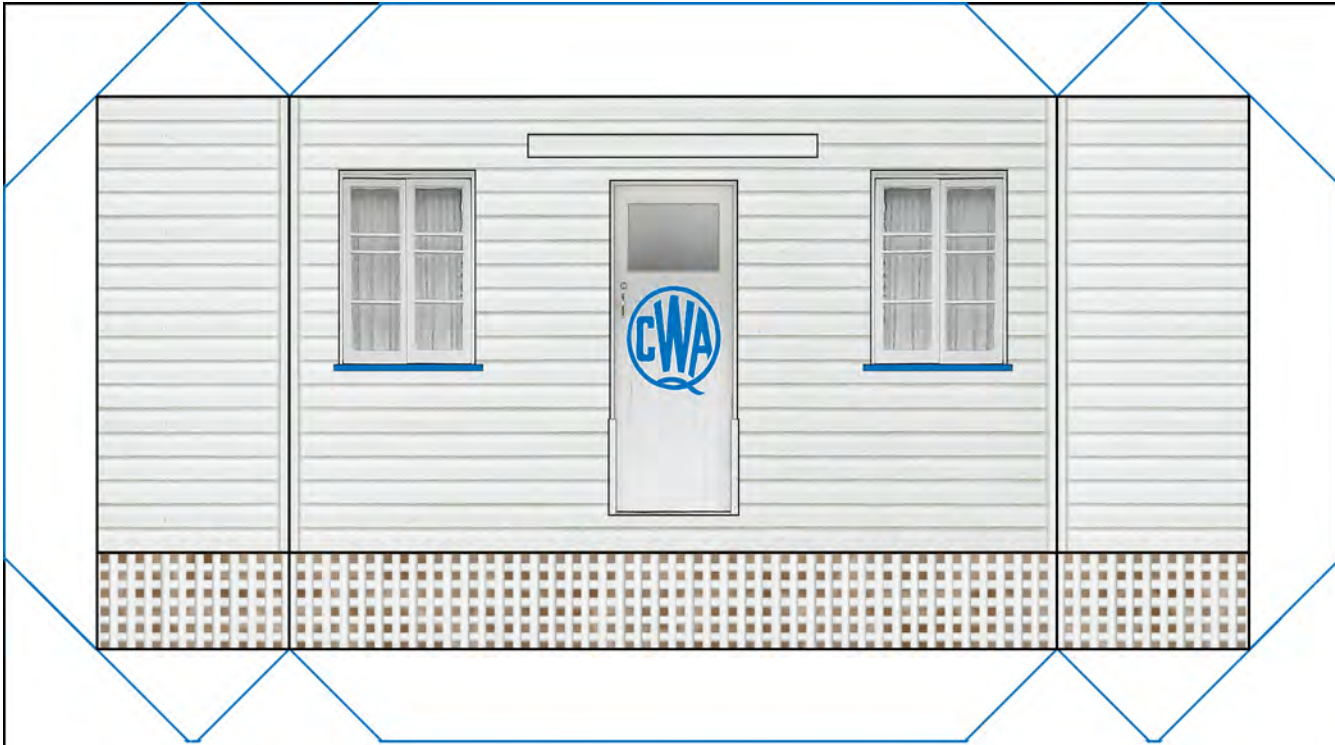
### CWA Cottage: O scale 1:48

0 1 2 3 4 5 6 7 8 9 10 11 12

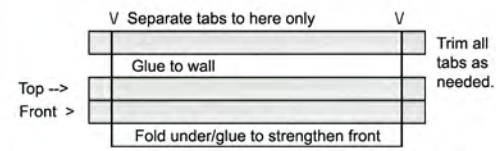
For non-commercial use only, © Lynn Zelmer 2022.

Modelling the Railways of Queensland Convention (zelmeroz.com/mrqc)





Corner trim: Cut to length and fold around.



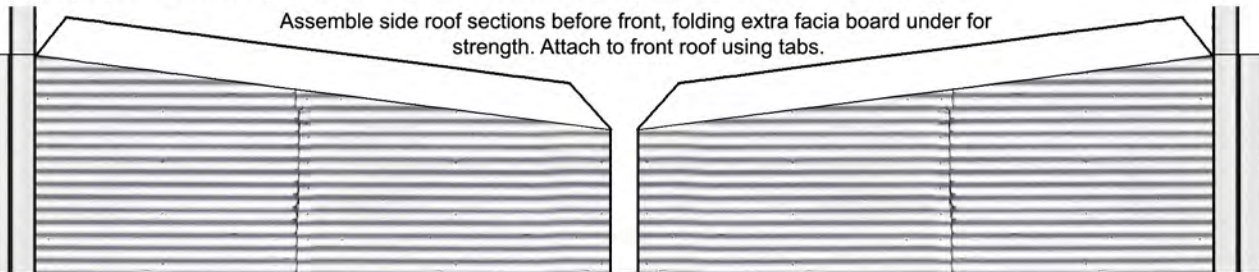
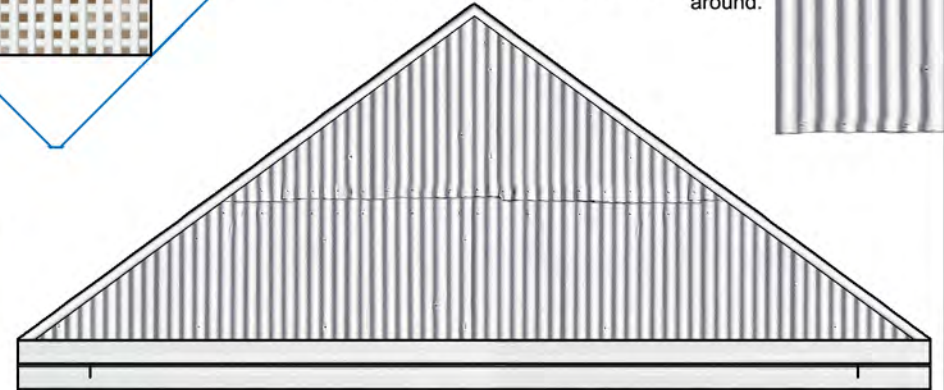
Entry Awning (selective compression for low profile model): Fold top strips back to serve as glue strip with texture facing forward, next strip as top, long tabs as front with bottom strip folded in to make open bottom box with texture on all visible surfaces.

Roof ridge cap (right): Cut to length and fold around.



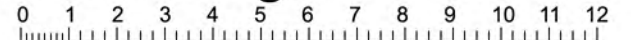
Facia boards for roof should fold under to provide more stability/strength to the exposed edge. Ideally the roof sections should be covered with individual CI sheets printed on paper and cut to slightly overhang exposed edge and facis board.

Selective compression is used for the front to back dimension only. In other words, while the side overhang is a scale 18" on each side the front only overhangs a scale 12" or less and the front roof only slopes back a scale 3' from eave to peak, leaving a horizontal ridge of roughly 2 scale' (the cottage is deeper than it is wide). The side sections (below) are to be cut to fit the backward slope of the front roof. Glue tabs will likely be needed between the front and side roofs, determine their size and location (probably on the front roof) before cutting



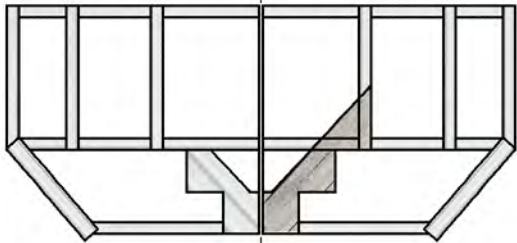
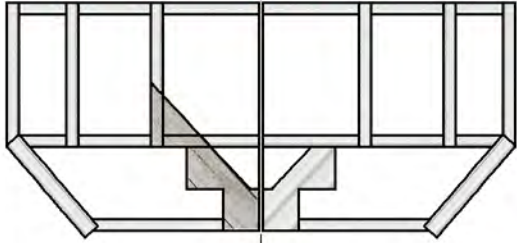
Low Profile version (front steps not included)

# CWA Cottage: O scale 1:48



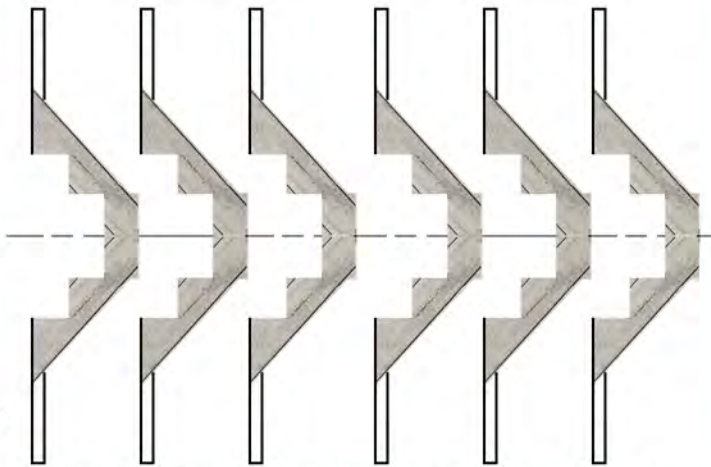
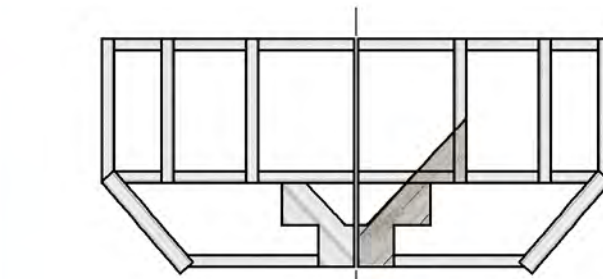
For non-commercial use only, © Lynn Zelmer 2022.  
Modelling the Railways of Queensland Convention (zelmeroz.com/mrqc)

This side to cottage when assembled



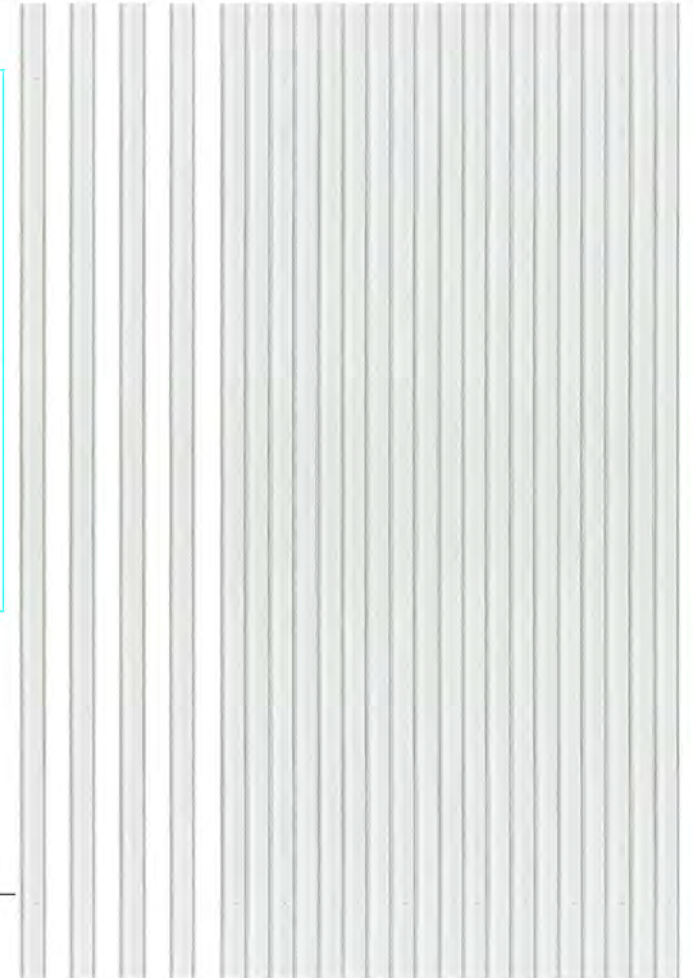
Cut on coloured lines then fold for gluing

Various width/length boards (below and far right) for decking and stair treads. Either fold in half and glue or glue to plain card before cutting to size for double thickness boards.



### Stair units for 2' high stumped base.

Fold far left railing pair in half and glue before cutting out. Dark timber texture goes to inside when assembling. Extra sets provide detailing timber, etc. Fold stair units and glue before cutting. They go inside railing units to provide support for deck/treads.



### CWA Cottage: O scale 1:48

0 1 2 3 4 5 6 7 8 9 10 11 12

For non-commercial use only, © Lynn Zelmer 2022.  
Modelling the Railways of Queensland Convention (zelmeroz.com/mrqc)