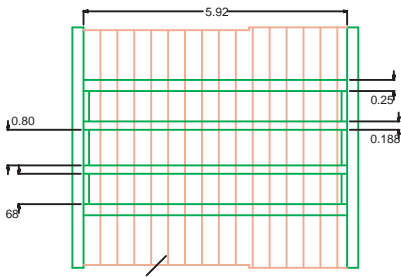
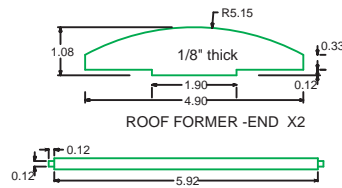


Construction Details: Stephen King's Innisfail Tramway Guards Van



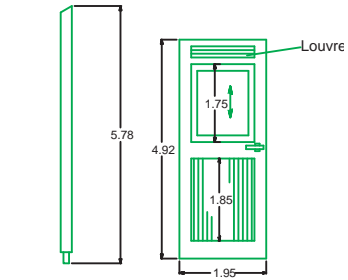
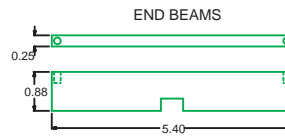
Floor boards 1/16" shorter on each side where side sheathing overlaps.



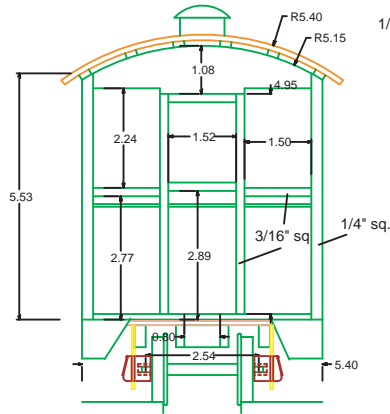
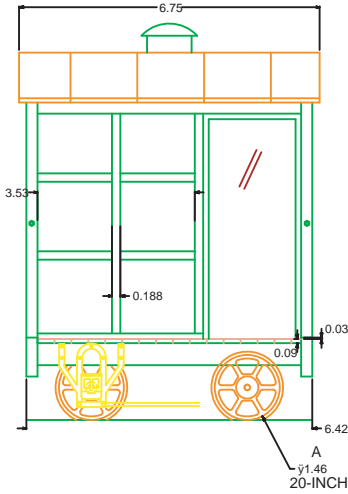
Top side sill (1/4" sq.)

CENTER SILLS, FLOOR

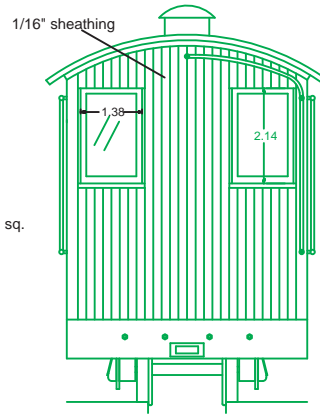
- 2 - 5.92 X .25 X .50
- 2 - 5.92 X .188 X .50
- 15 - 5.4 X .38 X .093 (trim as needed)
- 2 - 5.4 X .25 X .88 (W/ MORTISES)



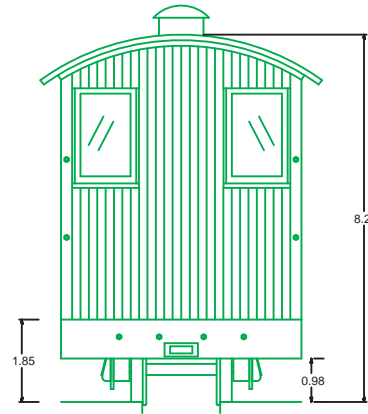
CORNER POST X4



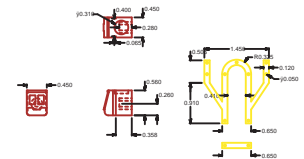
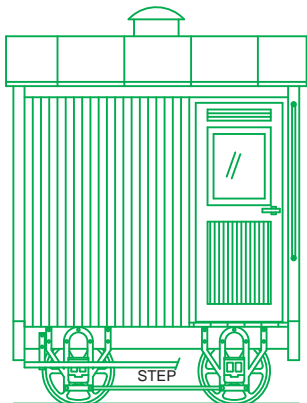
END FRAMING DETAIL



A END



B END



Axlebox details

Innisfail Tramway
4 wheel guard van
Full size 1:13.7
from 1/4" scale Drawings of Jim Fainges