

Jim Fainges' Queensland Buildings

The drawings in this album have been scanned from the *Turntable Newsletter*, published by Brisbane's Turntable Hobby Shop in the late 1990s and the early 2000s. While based on photographs and limited field dimensions, and sometimes essentially drawn freehand, they provide a very useful collection for the Queensland modeller. The CaneSIG web site has additional information and photographs on a number of structures, including Jim Hutchinson's excellent series on *Modelling Loco Depots*.

The plans (© Jim Fainges) are nominally HO scale (1:87 or 3.5 mm = 1') but may vary significantly due to the reproduction and scanning processes. Use them as a guide for your modelling, supplemented by photographs and other materials on the particular buildings you want to model.

Selected Additional Resources

Cuffley, Peter (1989). *Australian Houses of the '20s & '30s*, Fitzroy, VIC: The Five Mile Press.

Plans, sketches and photographs extend the description of Australian housing of the early part of the century. Colour schemes, accessories, fences, bibliography, index, 204 p.

Evans, Ian, Clive Lucas & Ian Stapleton (1984). *Colour Schemes for Old Australian Houses*, Sydney, NSW: Flannel Flower Press.

Painting and decorating guide for Australian homes built between 1820 and 1930. Includes colour samples and keyed house sketches, 108 p.

Hutchinson, Jim (2004). *Modelling the Railways of Queensland Convention No 6, 2004: Convention Notes*, Brisbane: MRQC 2004.

This is the most recent of the Convention books, any of which might have useful information. The 2004 book topics included Queensland Scenic Effects and Queensland Railway Stations, 158 p.

McAdam, Grant (2003). *Australian Style Structures in 1:48 Scale, Narrow Gauge DownUnder*, #15, pp24-27.

Rechner, Judy Gale (1998). *Brisbane House Styles 1880 to 1940: A guide to the affordable house*, Kelvin Grove: Brisbane History Group.

Guide to identifying and dating housing styles which were popular in Brisbane 1880 to 1940, including

worker's dwellings. Brisbane History Group STUDIES #2, 72 p.

Roberts, Ainslie (Illus.), Newell, Peter (Text) (1971). *Tropical Queensland Sketchbook*, Australia: Rigby Limited. Mostly buildings but also includes a delightful page of "roadside relics": cane and industrial type locomotives on display, 64 p.

Saini, Balwant & Ray Joyce (photog.) (1982). *Australian House: Homes of the Tropical North*, The, Sydney: Lansdowne/Welden Publishing.

Domestic Australian architecture of (primarily) Queensland: photos of houses and details, glossary, index, 127 p.

White, U, Jopson, K, & Roberts, A (Illus.); Newell, Peter (Text) (1976). *Queensland Sketchbook*, Rigby Ltd.

Sketches and brief history/description of buildings (primarily) and other historical items. All four components (Brisbane, Gold Coast and Green Mountains, Tropical Queensland, and Darling Downs) were published individually between 1967 and 1972, 239 p.

Drawing Index

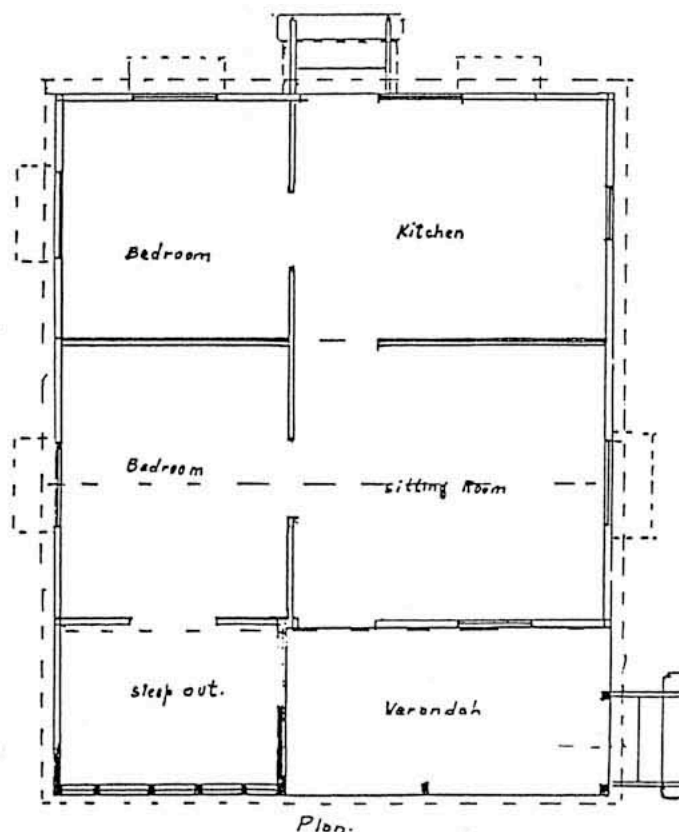
Guldup Cottage	2
Farmhouse (Generic Design)	3
Bookshop and Country Newspaper Building	5
Jewellers' Store – Charters Towers	6
Worker's Cottage – Darra – 1990s	7
Woolloowin Shop and Residence	8
Nanango Qld Shop and Produce Store	10
Estate Office, Tiara Qld 1995	16
Oakey Post Office	18
Police Station	20
School Building	22
Country Service Station	24
Queensland Railway Station	26
Sand Drying Tower – Fairymead Mill	28
Ackland Coal Co Mine Buildings	29



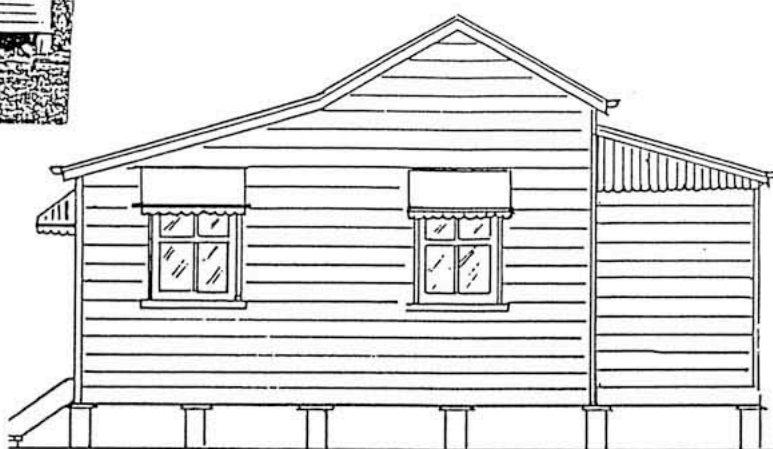
Guldup Cottage

A very small cottage which was moved from Morayfield to become the Caboolture Schoolmaster's residence. It has a standard Queensland cottage construction, consisting of short stumps, weatherboard walls, and a corrugated roof. There are colonial hung windows in the main rooms, and casements and louvres in the sleepout, with louvres only in the kitchen. The house has paneled doors at the front, and a vertical VJ sheeted door at the rear. All side windows and back door and windows are protected by window shades.

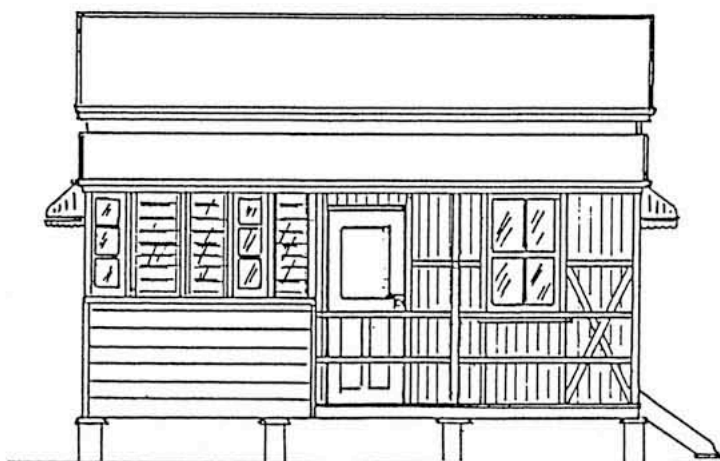
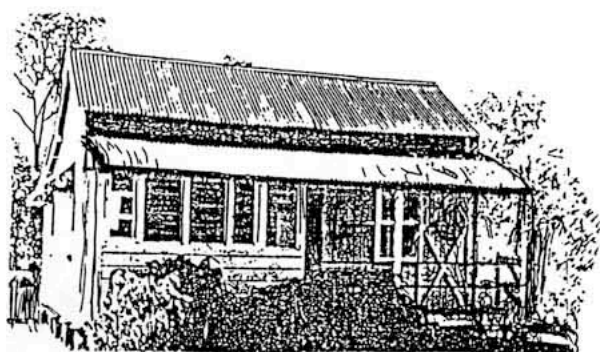
Colour scheme: walls, light cream; windows and trim, white; gutters, sills and handrails, dark green.



Drawn by Jim Fainges, 1995.
Nominal scale: 3.5 mm = 1'



Left side elevation.



front elevation.

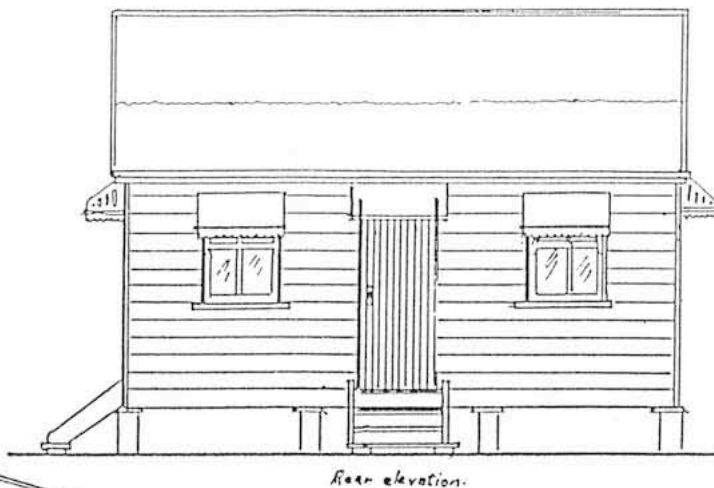
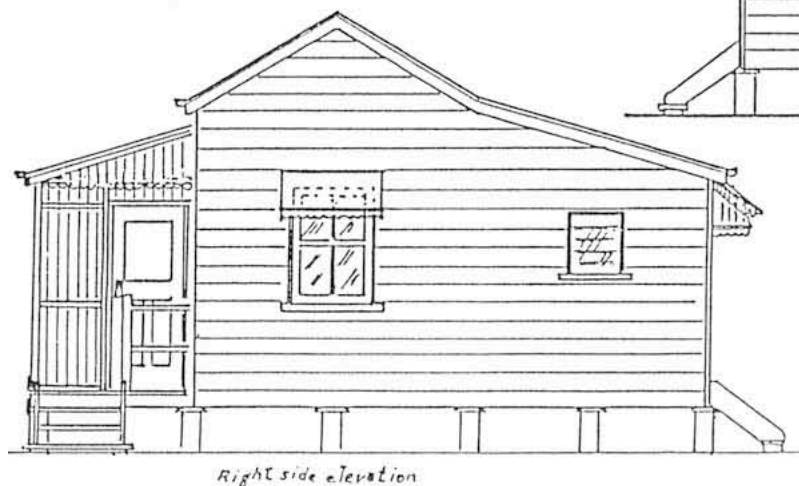
Right side and rear elevations on next page.



Guldup Cottage

Drawn by Jim Fainges, 1995.

Nominal scale: 3.5 mm = 1'



Farm House (Generic Design)

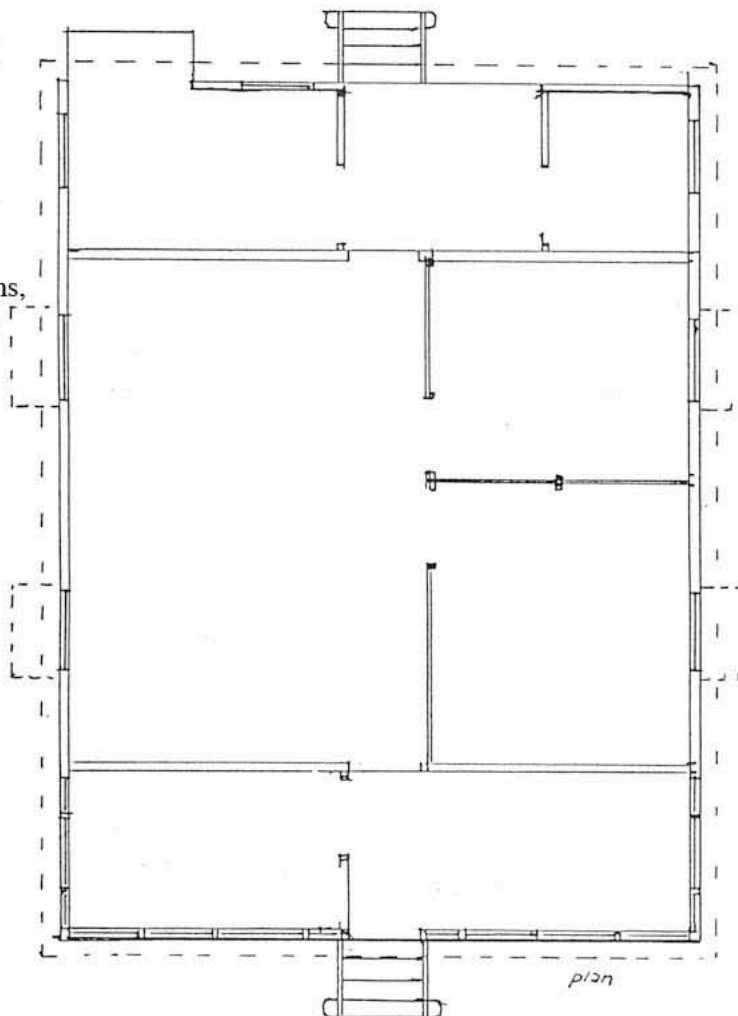
This cottage is typical of many that may be found in Queensland. The front verandah was often found enclosed when at a later date another bedroom was needed. The back verandah often sported a kitchen at one end and a bathroom at the other.

The main structure consisted of three or four rooms, and had weatherboard or chamferboard walls and an iron roof.

Walls were usually painted a light colour with darker colour trim, white windows and facias. Should you want to give a pre-war touch to your building, it would need a darkish black/brown colour to represent the stained finish of oiled weatherboard, with white windows and facias, dark brown sills and gutters.

Drawn by Jim Fainges, 1995.

Nominal scale: 3.5 mm = 1'

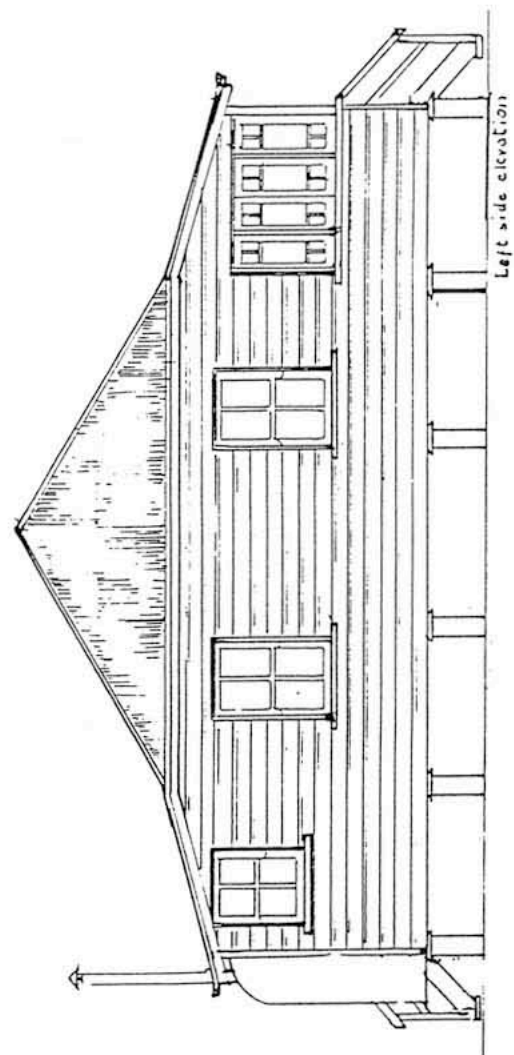
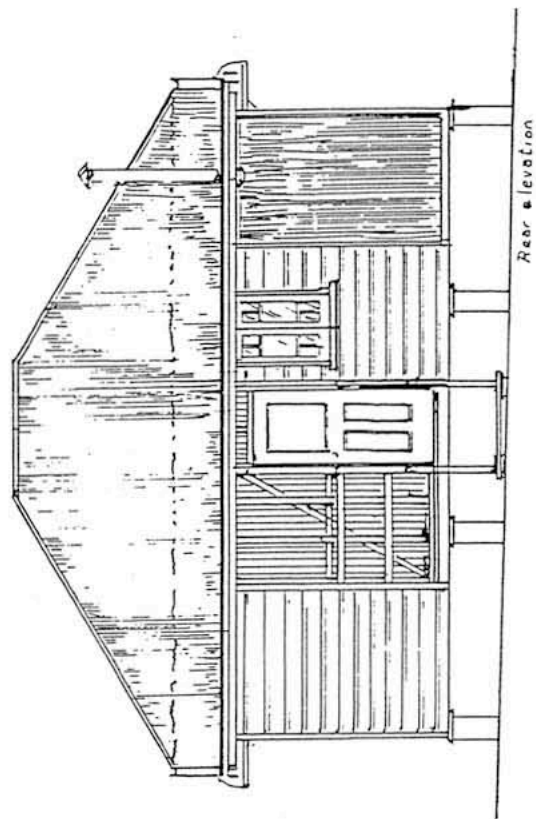
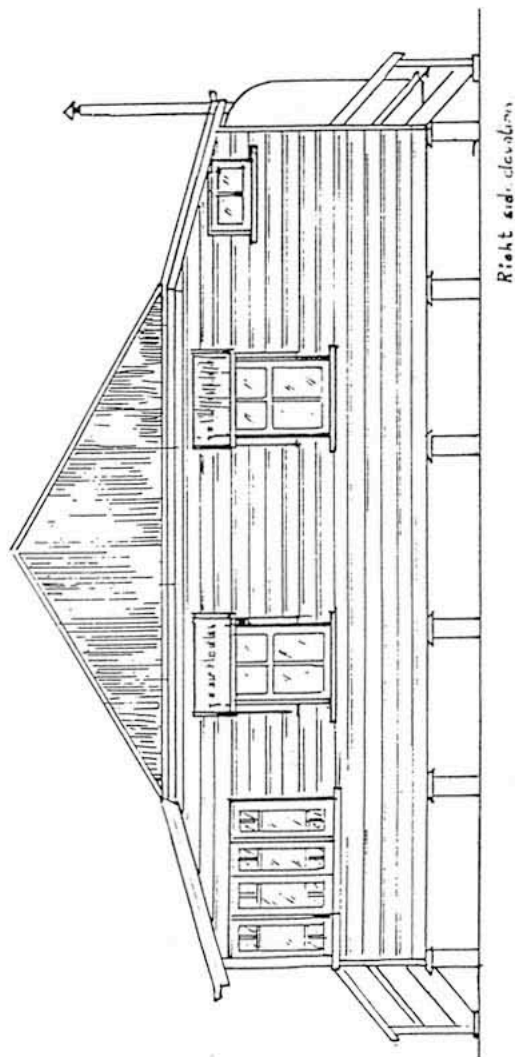
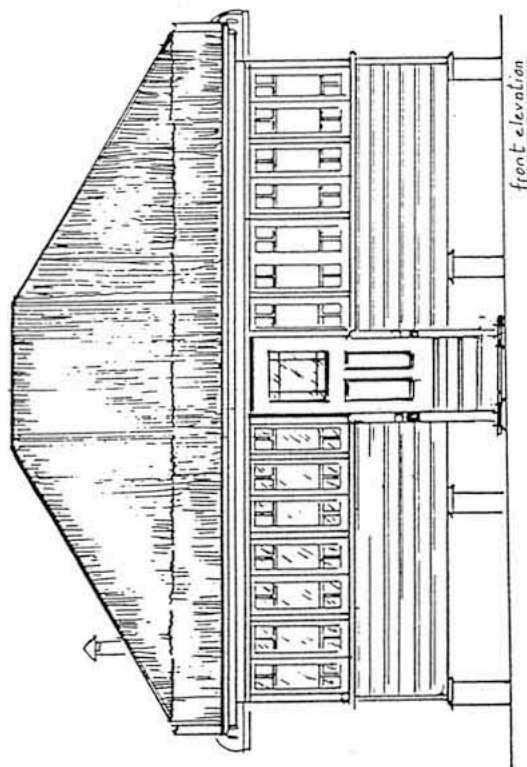


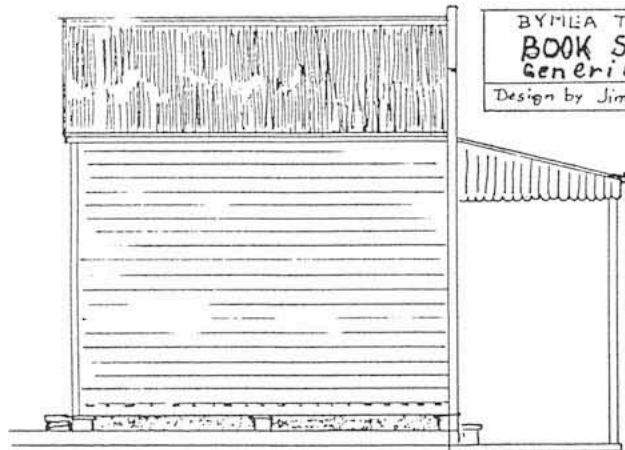


Farmhouse (Generic Design)

Drawn by Jim Fainges, 1995.

Nominal scale: 3.5 mm = 1'





BYMEA TOWN
BOOK SHOP
Generic design
Design by Jim Fainges
JHFA 95.

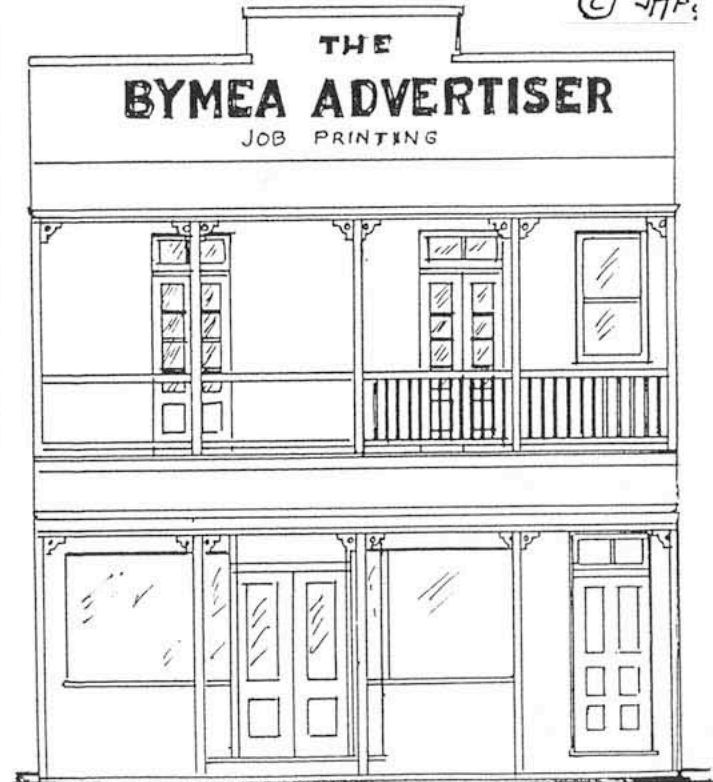
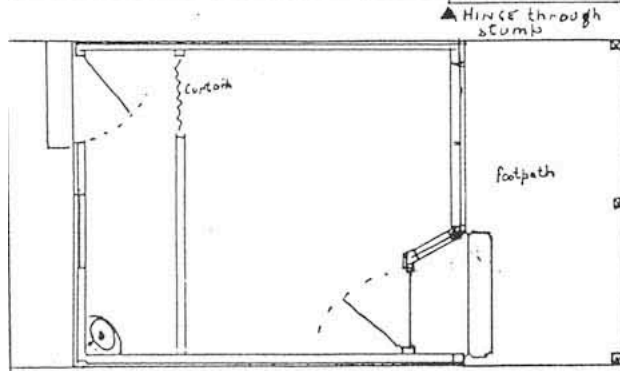


Nominal scale: 3.5 mm = 1'

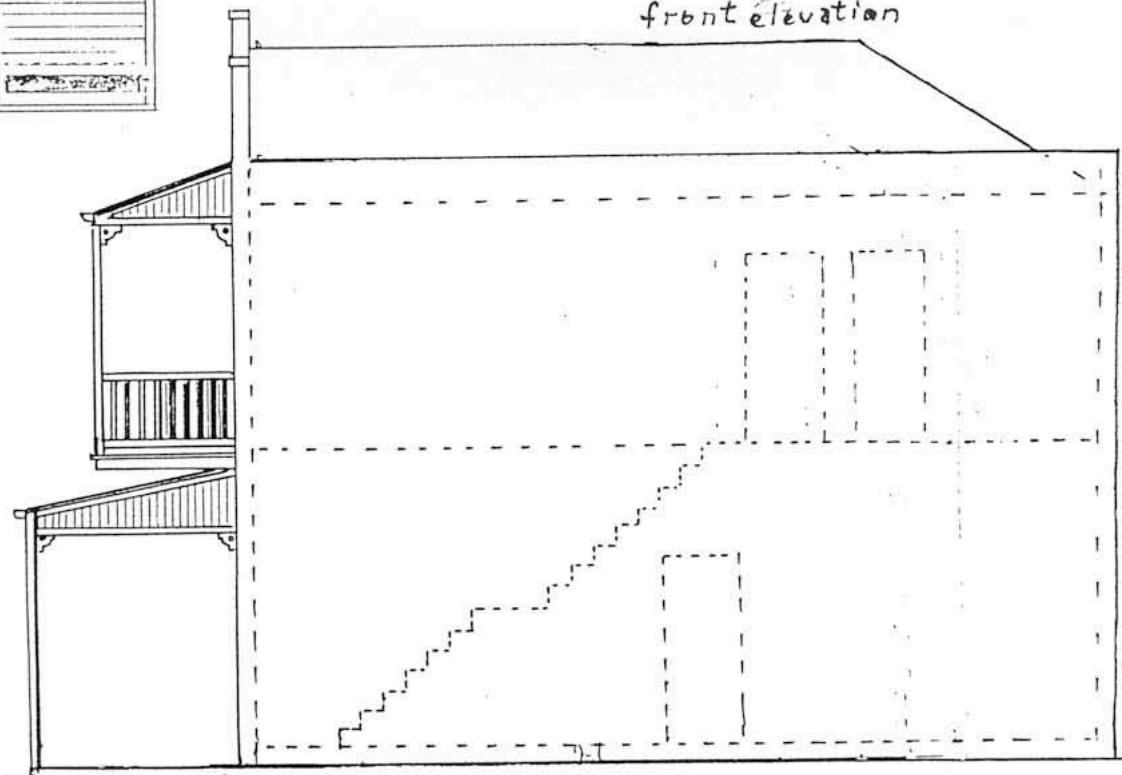
Country Newspaper Building
Generic design.

Drawn Jim Fainges

© JHFA



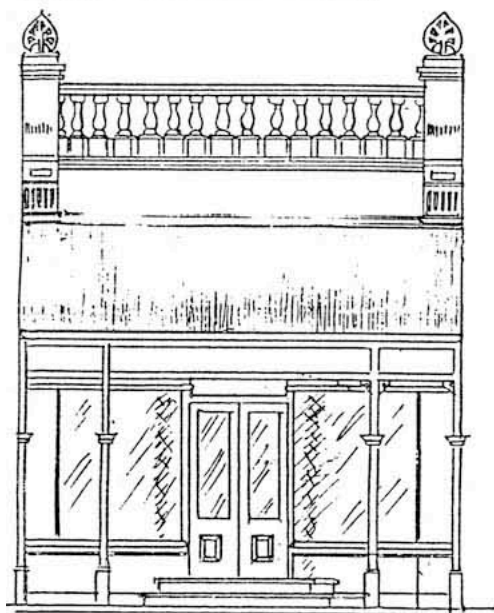
front elevation



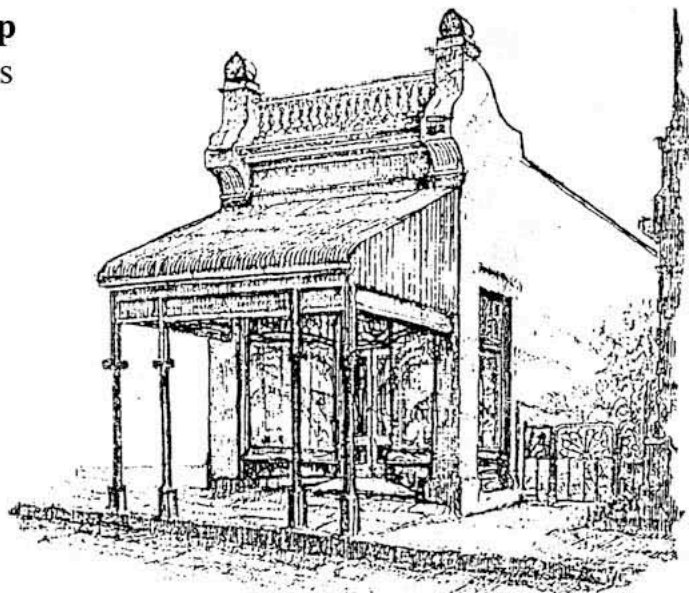
Side elevation



Jeweller's Shop Charters Towers



FRONT ELEVATION



Text and drawings by Jim Fainges, illustration by K Norris

Nominal scale: 3.5 mm = 1'

The only photograph I had was taken from directly across the street in Charters Towers. The illustration was sent to me by a friend, and from this excellent drawing and my photographs and measurements, I was able to reconstruct this interesting structure.

The interesting feature of this building is the heavy ornamental facade and the curved glass frontage of the shop's windows (see partial plan view).

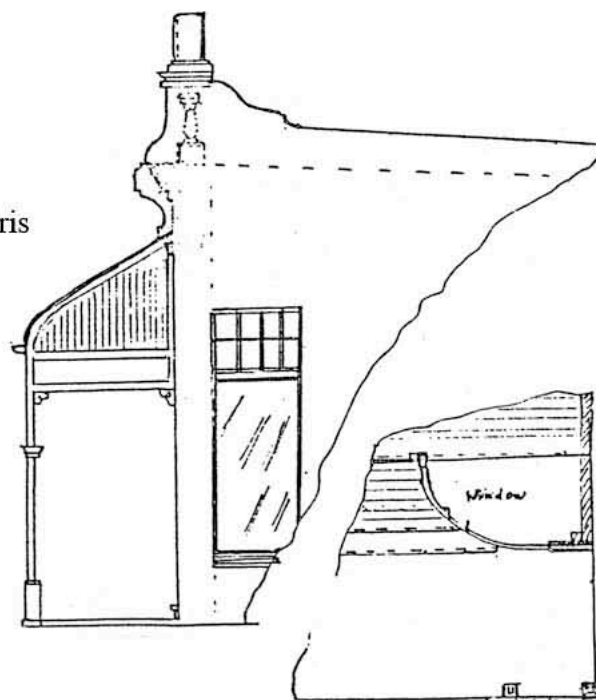
The shop is built of concrete masonry, finished with a fine stippled pattern on the surface and painted. This finish can be easily achieved when modelling the structure by using card, paint and fine sand, sprinkled on while the paint is still wet. The detail on the front wall can be achieved by laying in different thicknesses of card.

Whilst the original structure was used as a jewellers' it could be a chemist, a boutique shop or many other usages in any medium sized town.

By using thin dowel, filed to shape, you can achieve the necessary look for the balusters, whereas cast iron columns holding the galvanised iron and timber awning can be made of wire, wrapped with paper to give the shape required.

The corrugated iron roof slopes down from the front, and is flashed inside the side walls, probably overhanging the back wall.

Note: The depth of the building is not shown, as it can then be made any length.



PART SIDE ELEVATION PART PLAN

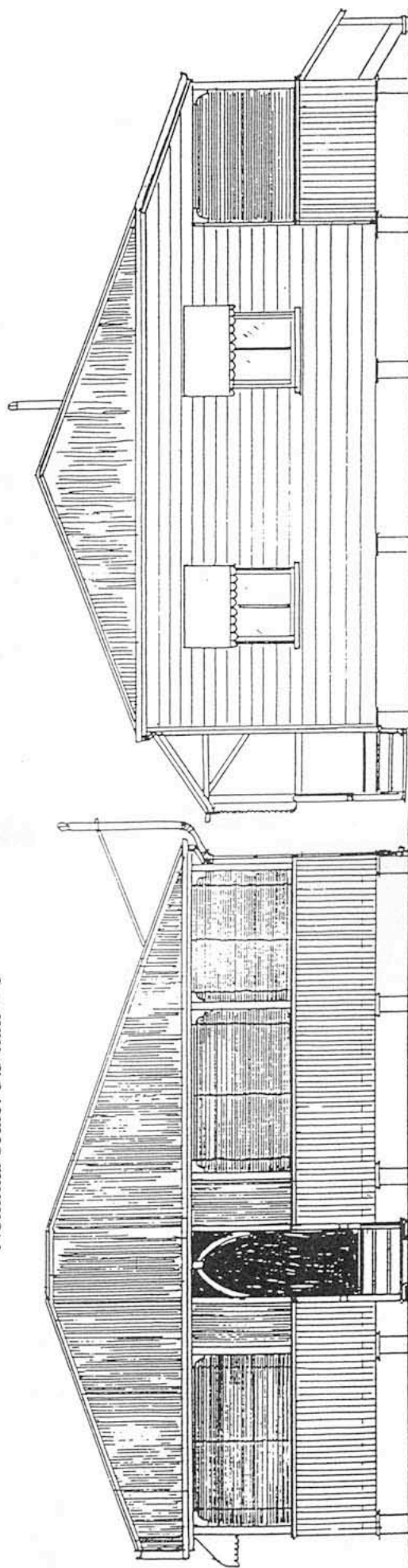


Worker's Cottage - Darra - 1990

Traced by Jim Fainges from drawings by Jim Bilby, 1990

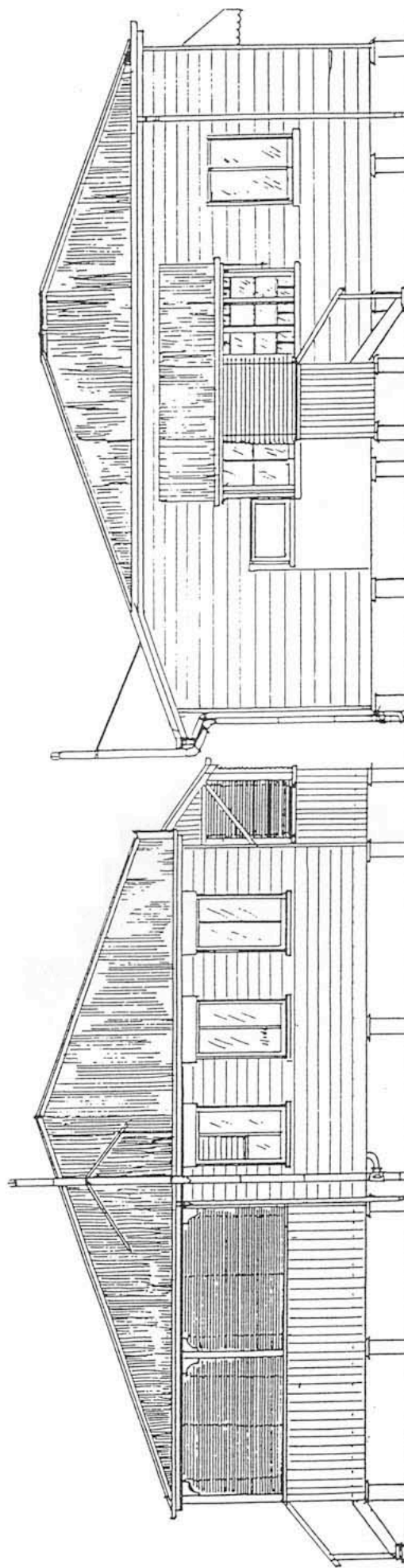
Nominal scale: 3.5 mm = 1'

Note: Aluminum sliding windows and awnings (1960s), roller and venetian blinds 1930s-40s



Front elevation

Left Elevation



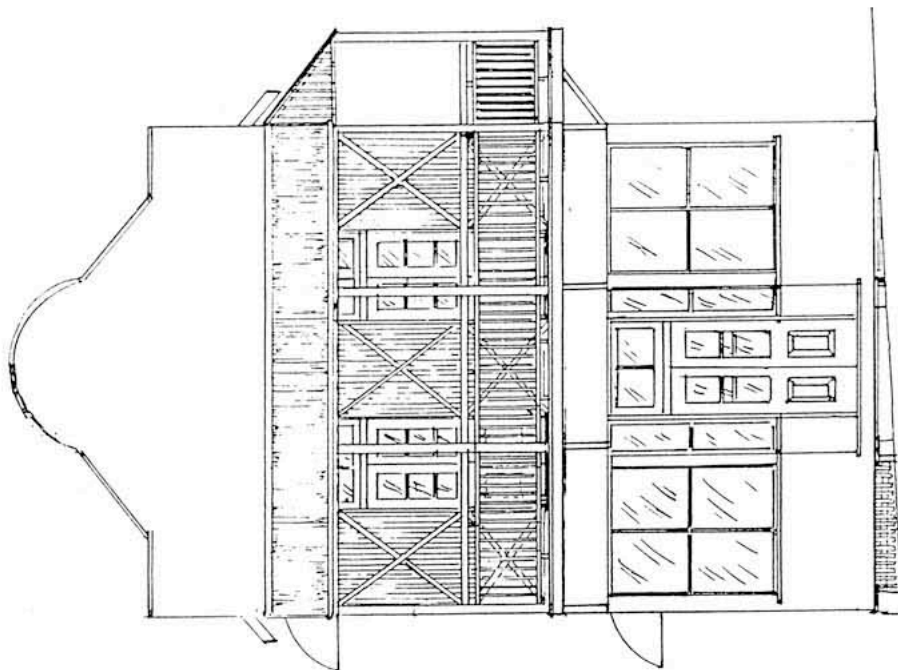
Right Elevation

Rear elevation

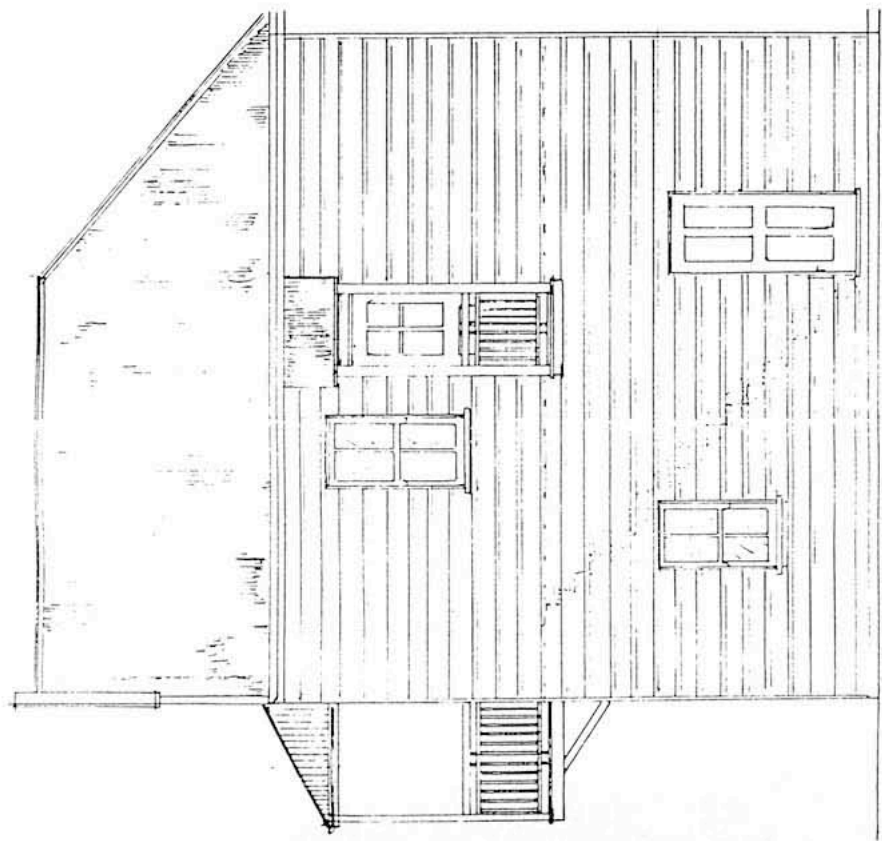


Woolloowin Shop and Residence

Drawn by Jim Fainges from architect's plans, 1997
Nominal scale: 3.5 mm = 1'



Front elevation



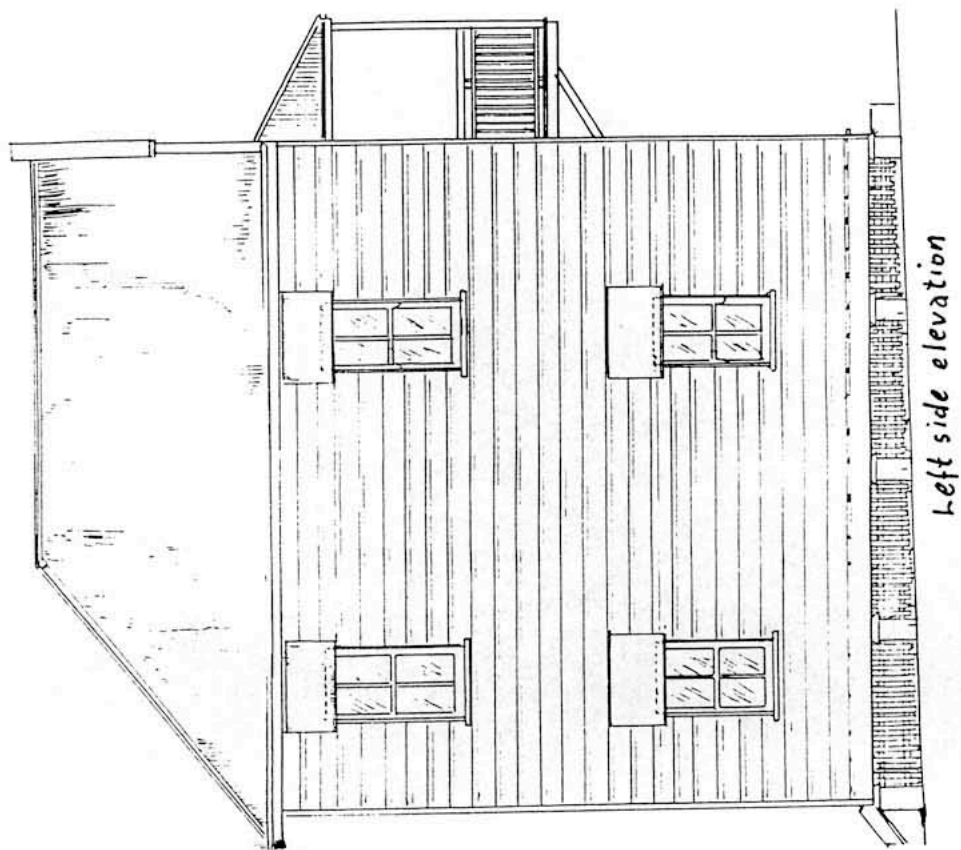
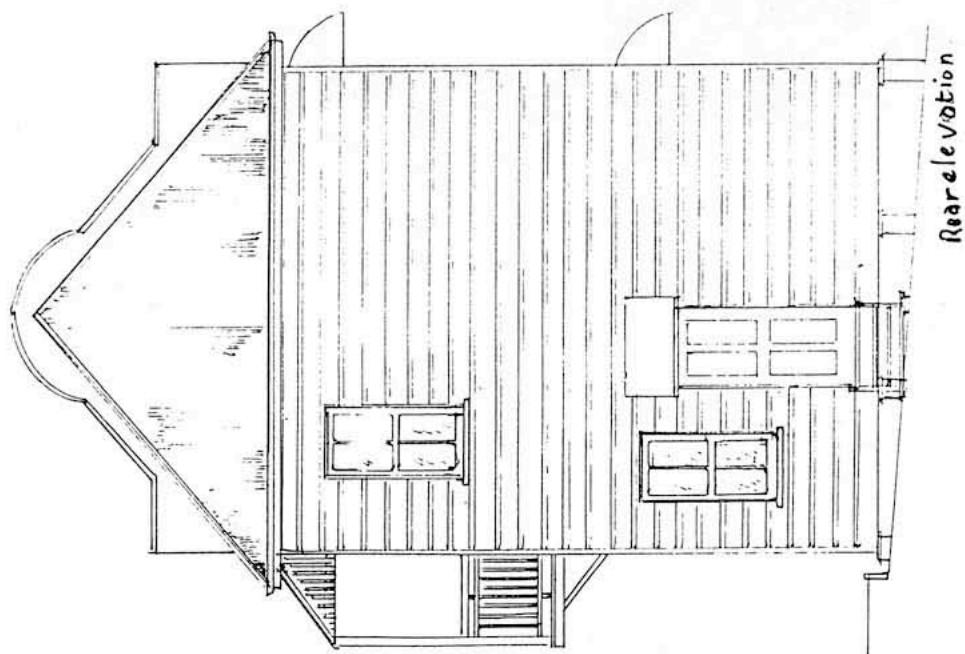
Right side elevation



Woolloowin Shop and Residence

Drawn by Jim Fainges from architect's plans, 1997

Nominal scale: 3.5 mm = 1'





Nanango Qld Shop and Produce Store

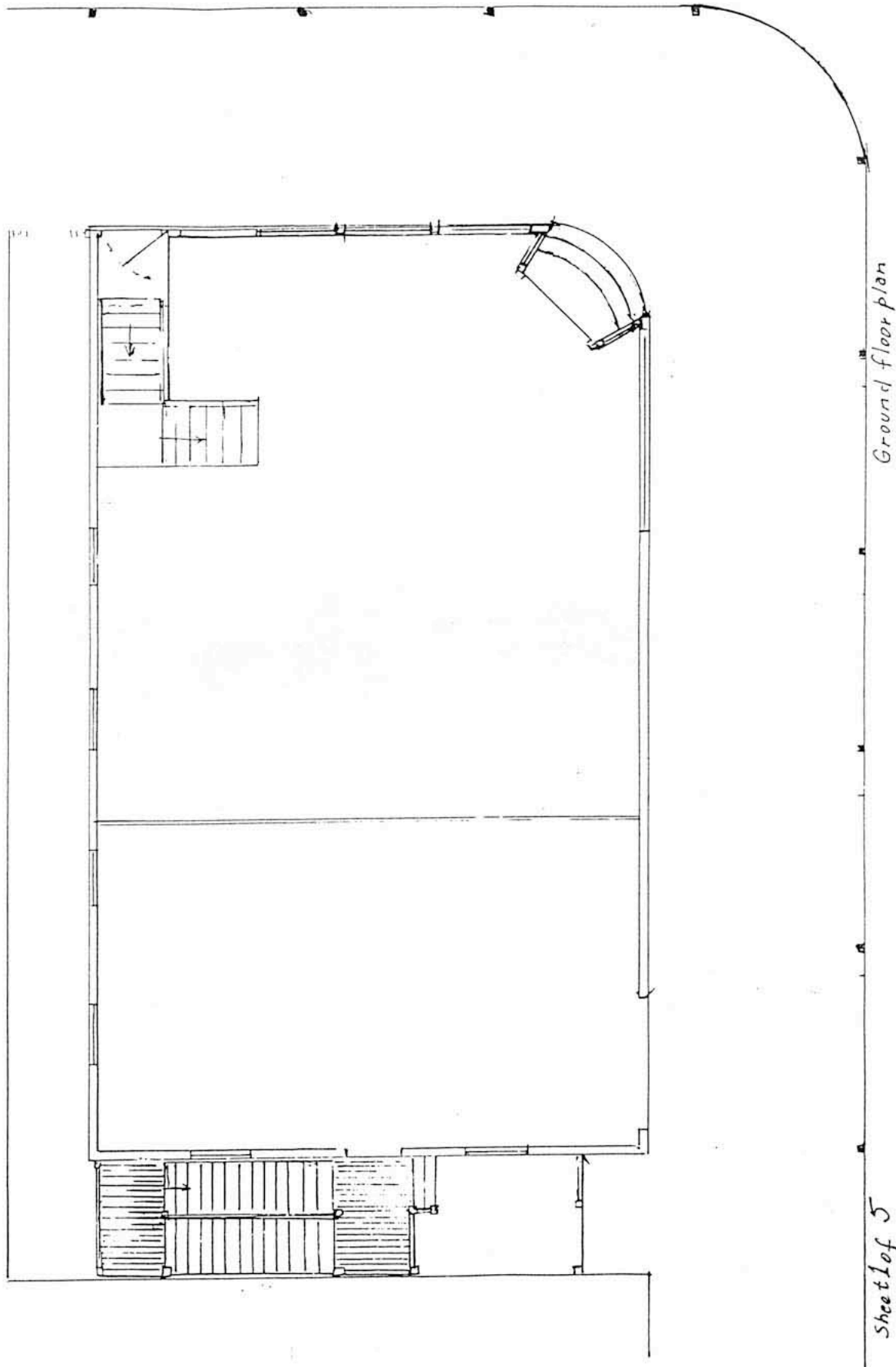
Drawn by Jim Fainges 1996; Nominal scale: 3.5 mm = 1'





Nanango Old Shop and Produce Store

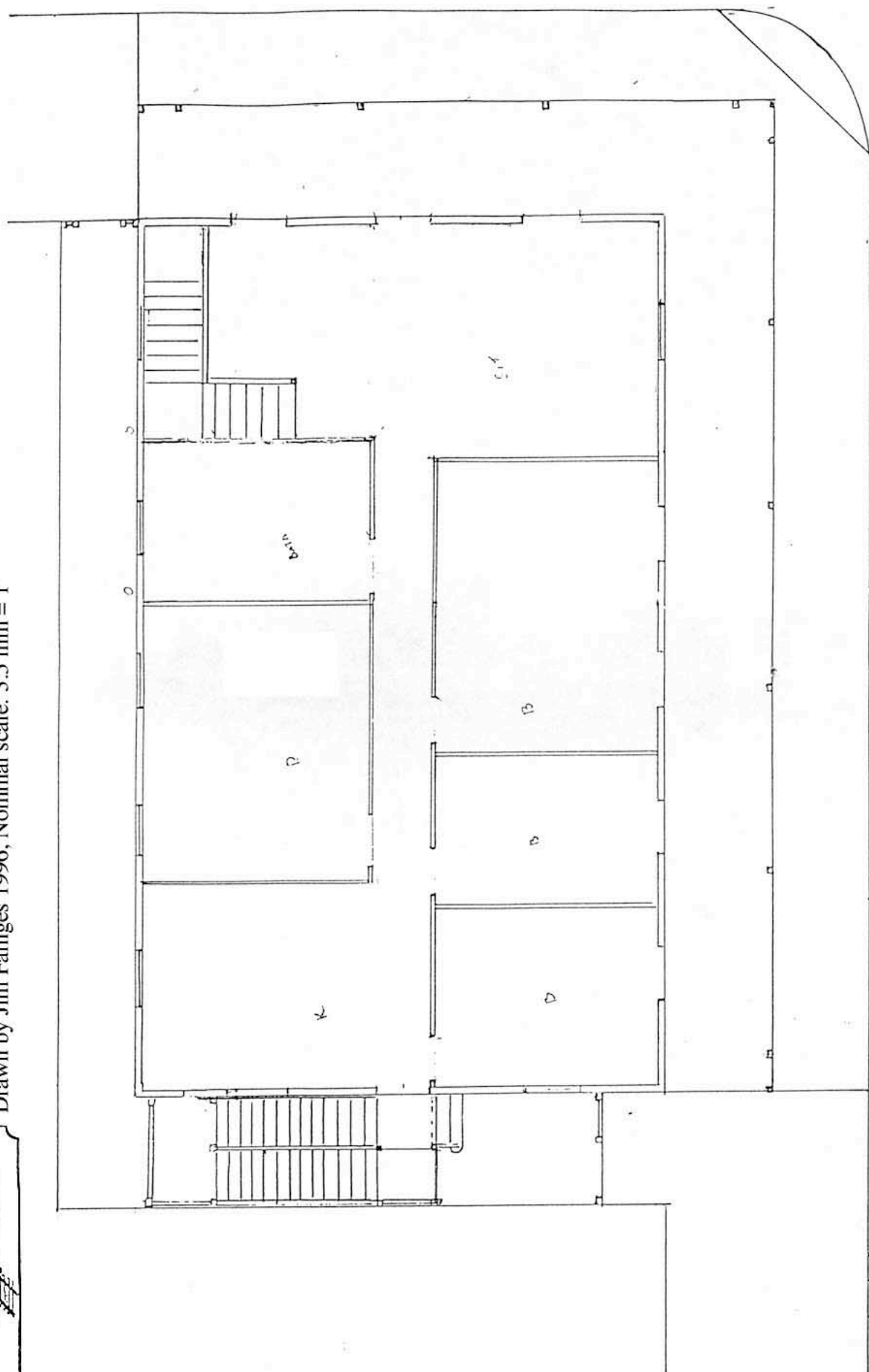
Drawn by Jim Fainges 1996; Nominal scale: 3.5 mm = 1'





Nanango Qld Shop and Produce Store

Drawn by Jim Fainges 1996; Nominal scale: 3.5 mm = 1'



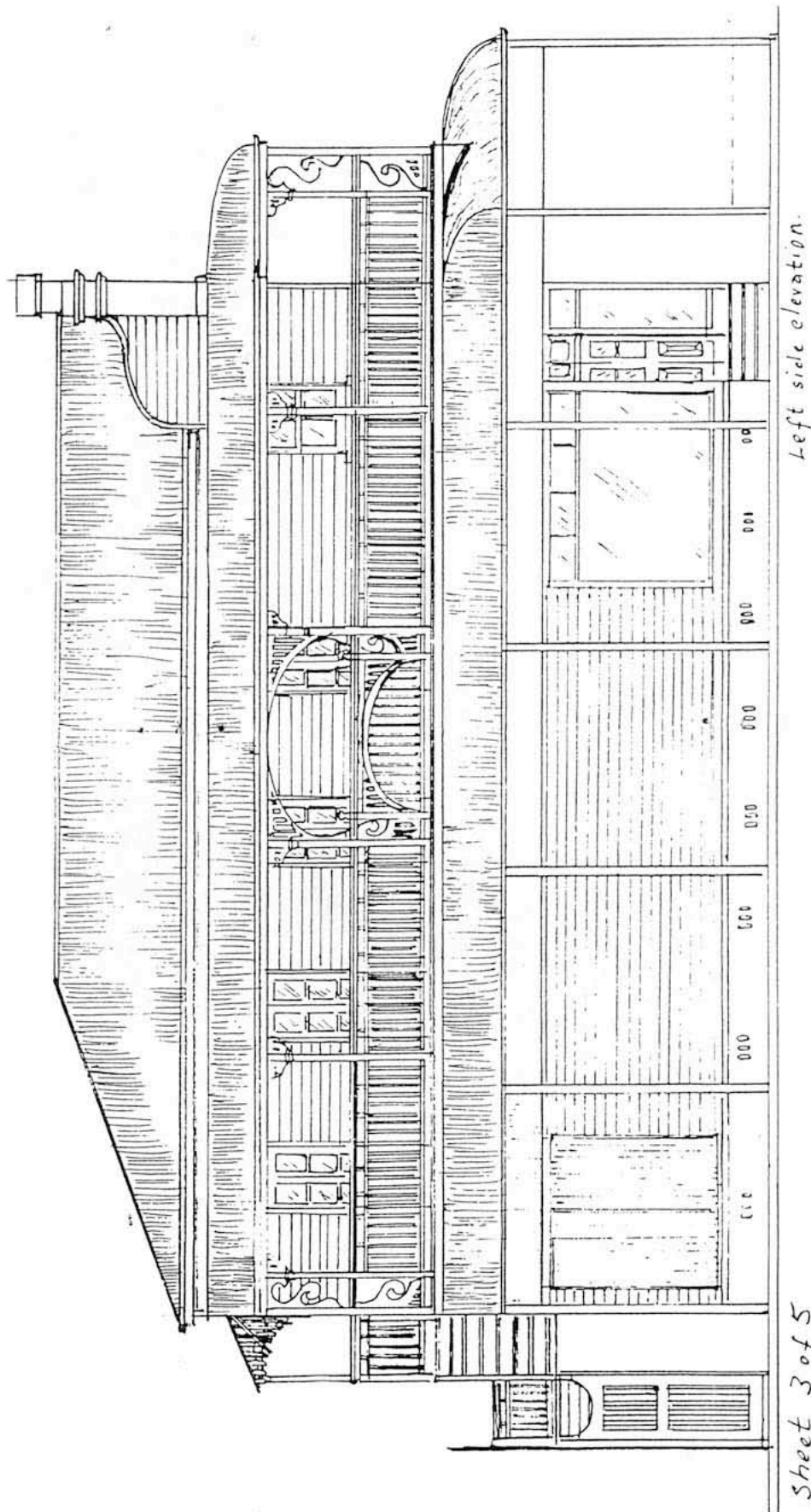
Top floor Plan

Sheet 2 of 5



Nanango Old Shop and Produce Store

Drawn by Jim Fainges 1996; Nominal scale: 3.5 mm = 1'



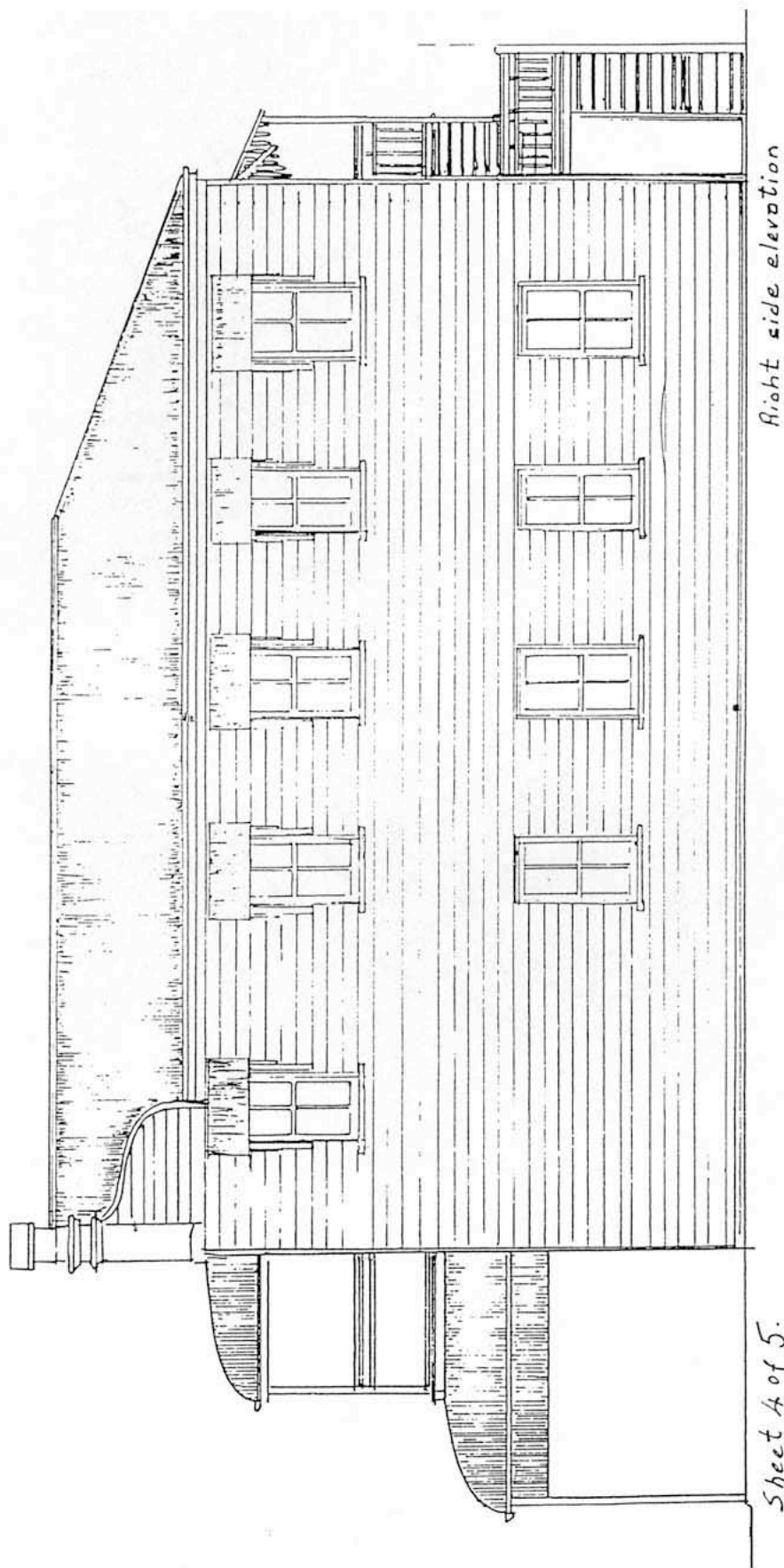
Left side elevation.

Sheet 3 of 5



Nanango Qld Shop and Produce Store

Drawn by Jim Fainges 1996; Nominal scale: 3.5 mm = 1'





Nanango Qld Shop and Produce Store

Drawn by Jim Fainges 1996; Nominal scale: 3.5 mm = 1'



Front elevation



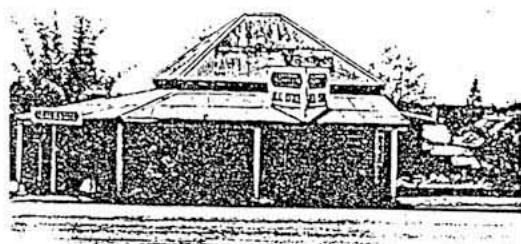
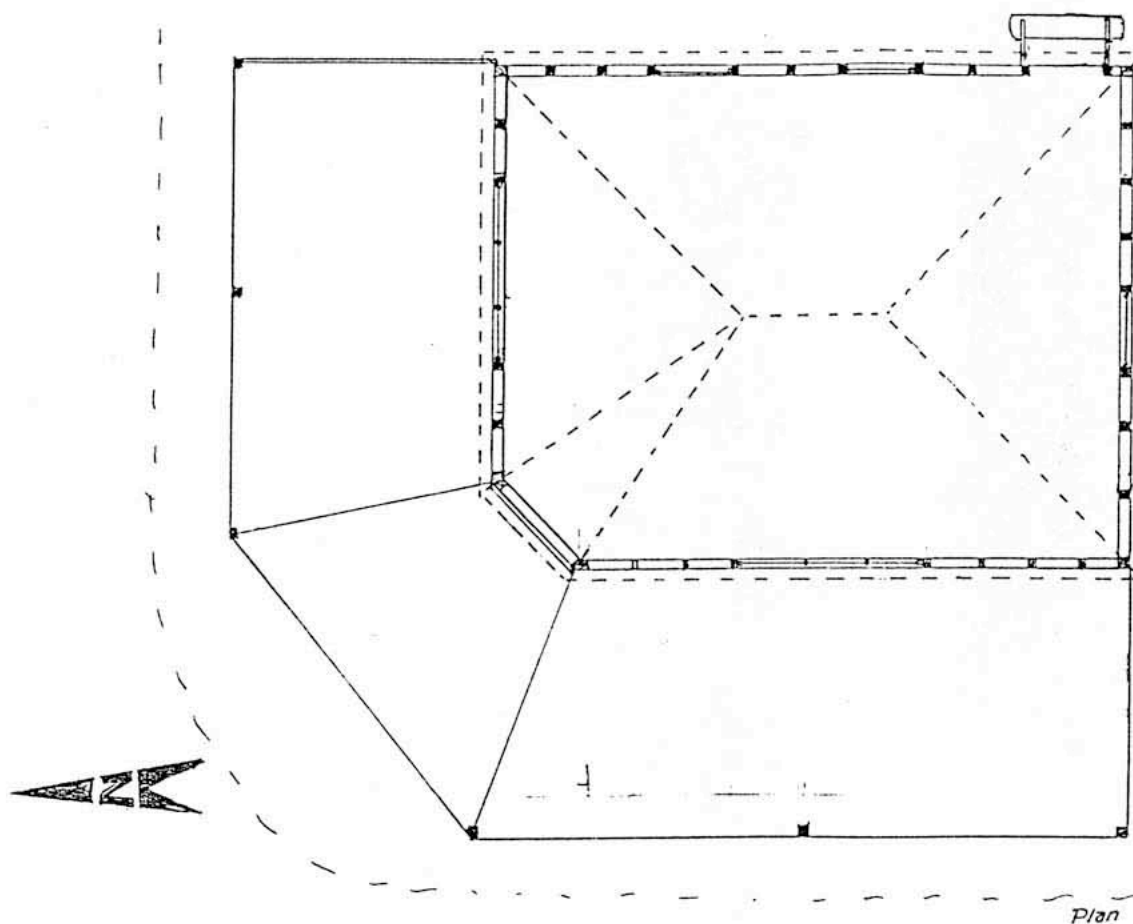
Back elevation



Estate Office, Tiaro Qld 1995

Drawn by Jim Fainges 1997

Nominal scale: 3.5 mm = 1'



External frame, chamferboard siding, corrugated iron roof. Roof: red corrugated iron. Walls: russet (chamferboard walls, exterior studs). Trim: white (facias, windows and posts). Guttering: brown.

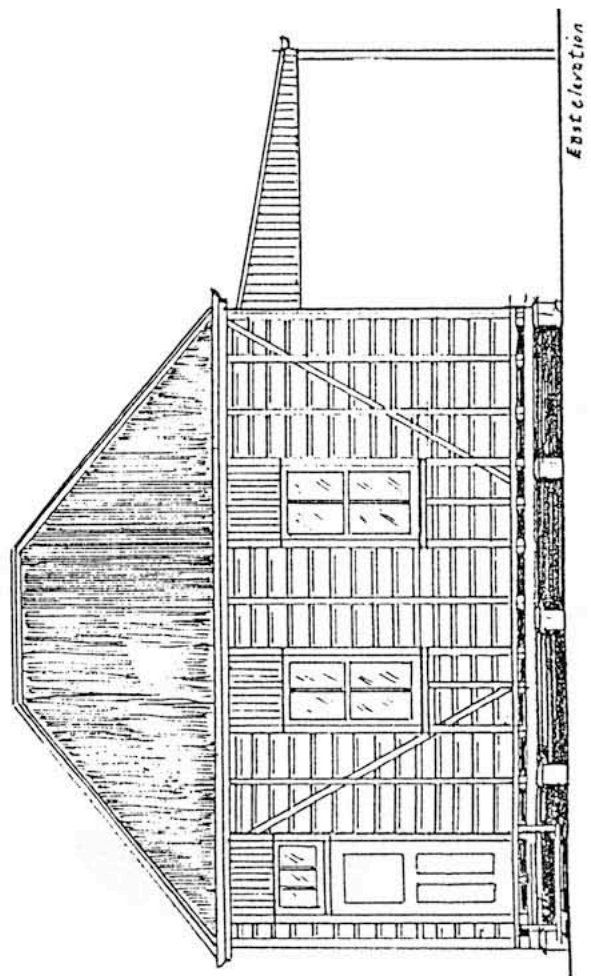
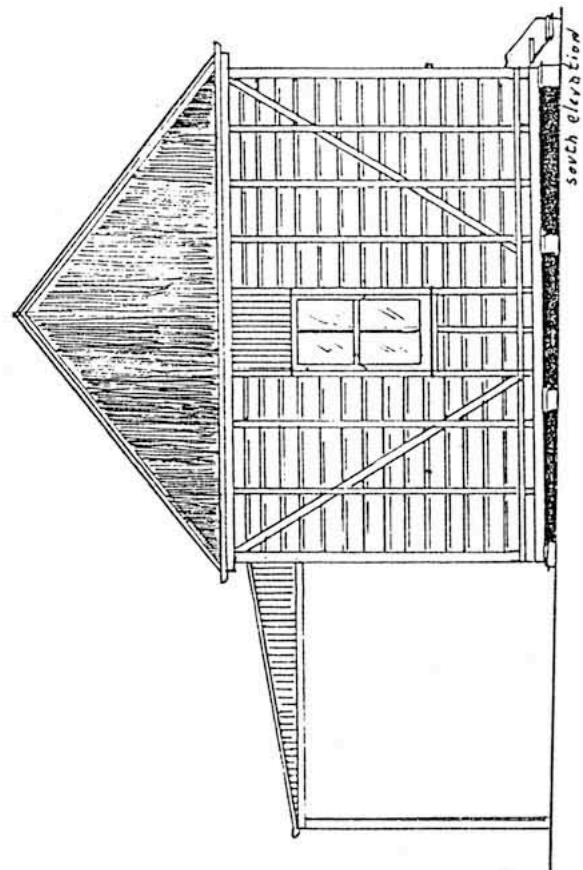
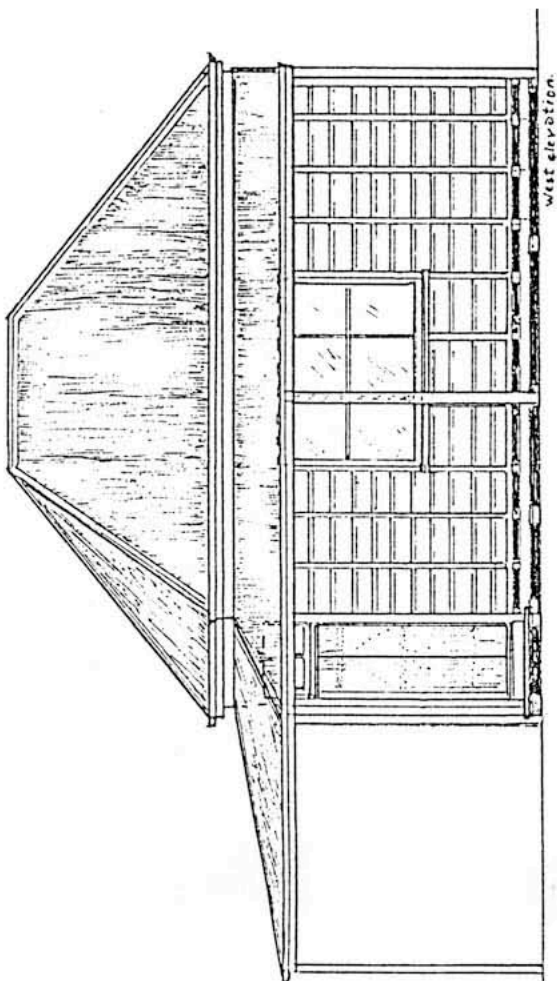
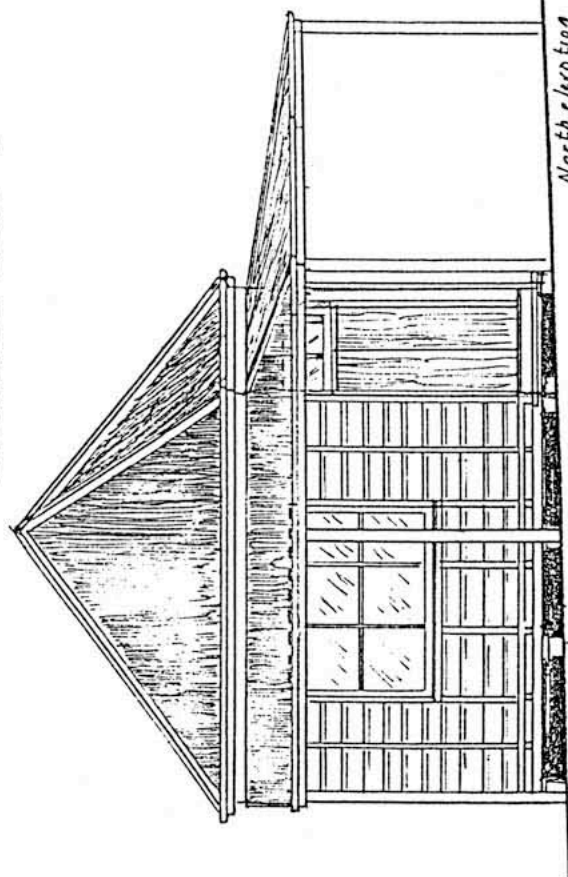




Estate Office, Tiaro Qld 1995

Drawn by Jim Fainges 1997

Nominal scale: 3.5 mm = 1'





Oakey Post Office (as originally built)

Drawn by Jim Fainges

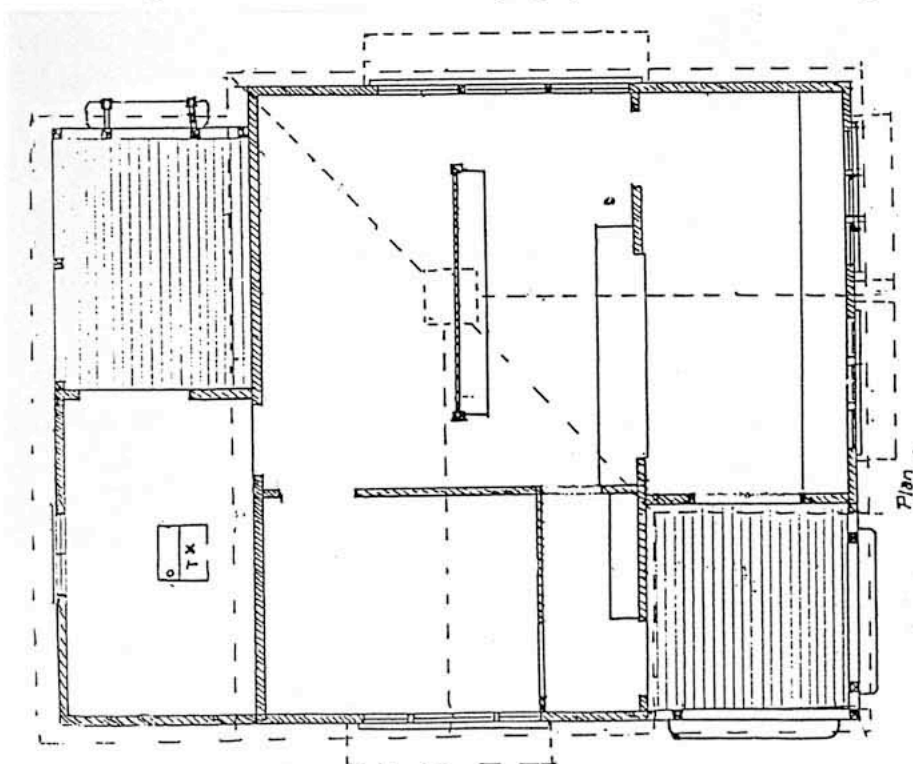
Nominal scale: 3.5 mm = 1'



This Post Office stands in the main street of Oakey (near Toowoomba, Qld) over the road from the Railway Hotel. The drawings show the Post Office as it was originally built. The current Post Office has been enlarged from the original, with extensions on the right side and across the rear, making it almost four times its original size.

The photograph was copied from a print on the wall of the Post Master's Office, for which I thank him for allowing me to copy same.

The building is cream with white and brown trim. Construction in the smaller scales would be easiest in polystyrene sheet such as 'Evergreen' sections.

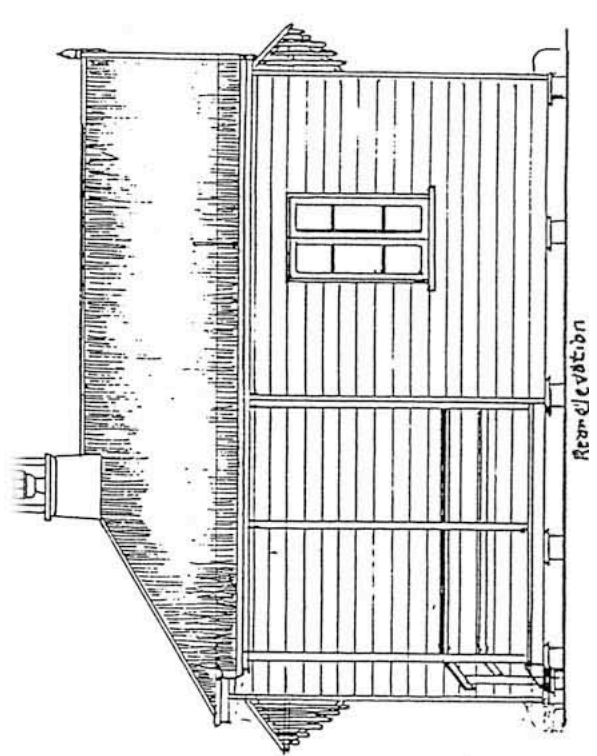
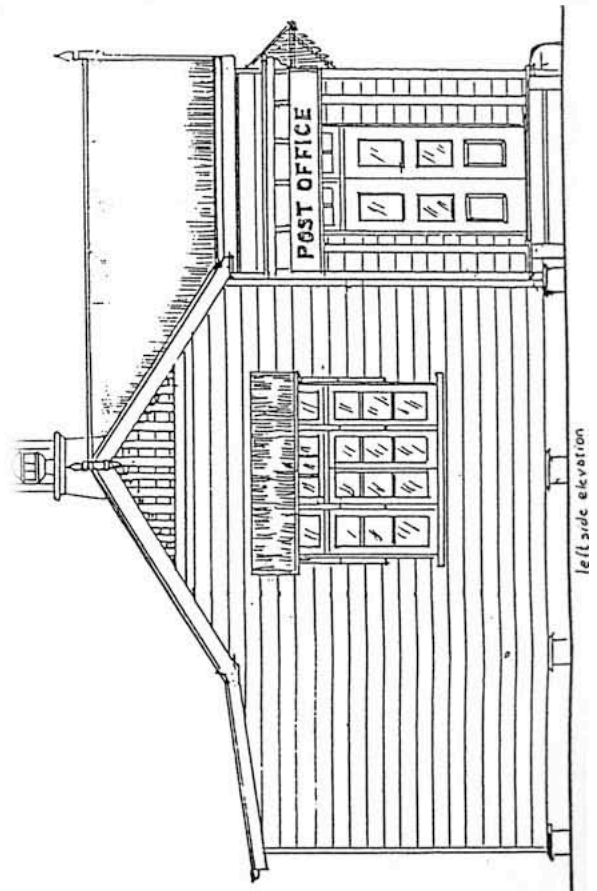
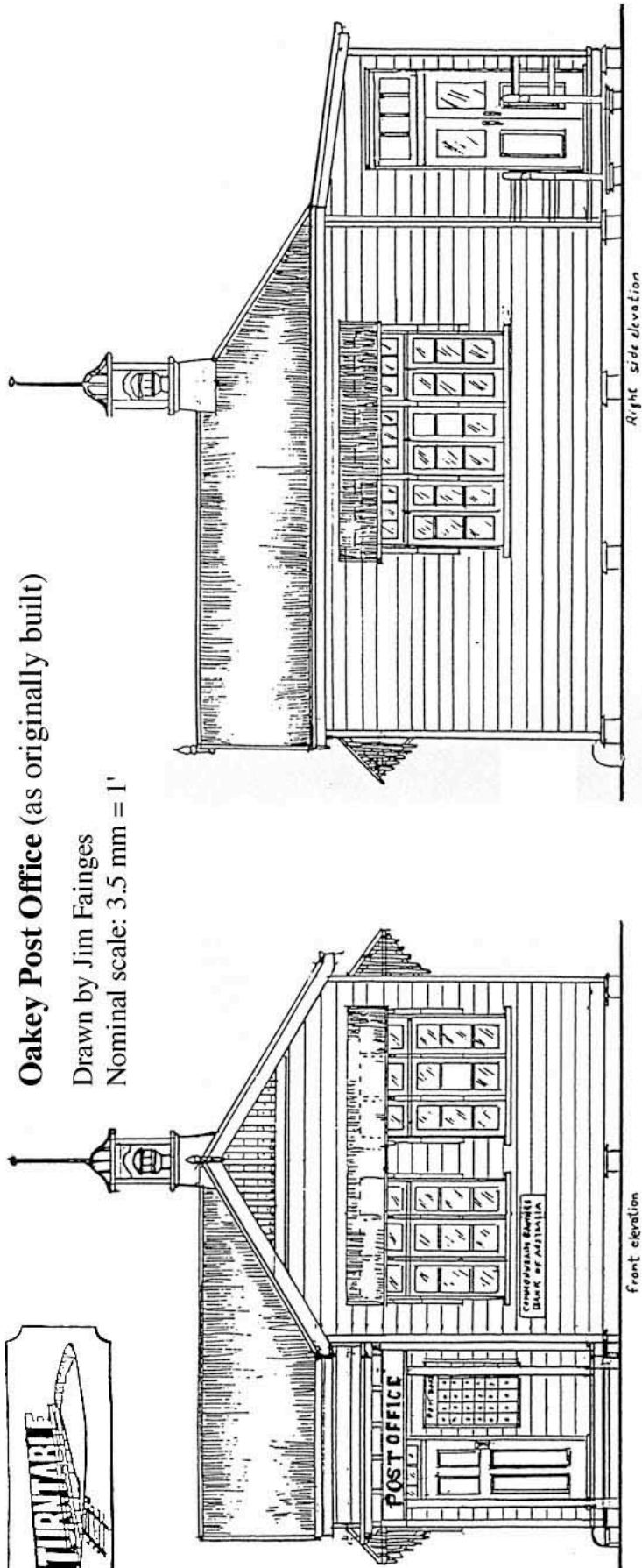




Oakey Post Office (as originally built)

Drawn by Jim Fainges

Nominal scale: 3.5 mm = 1'

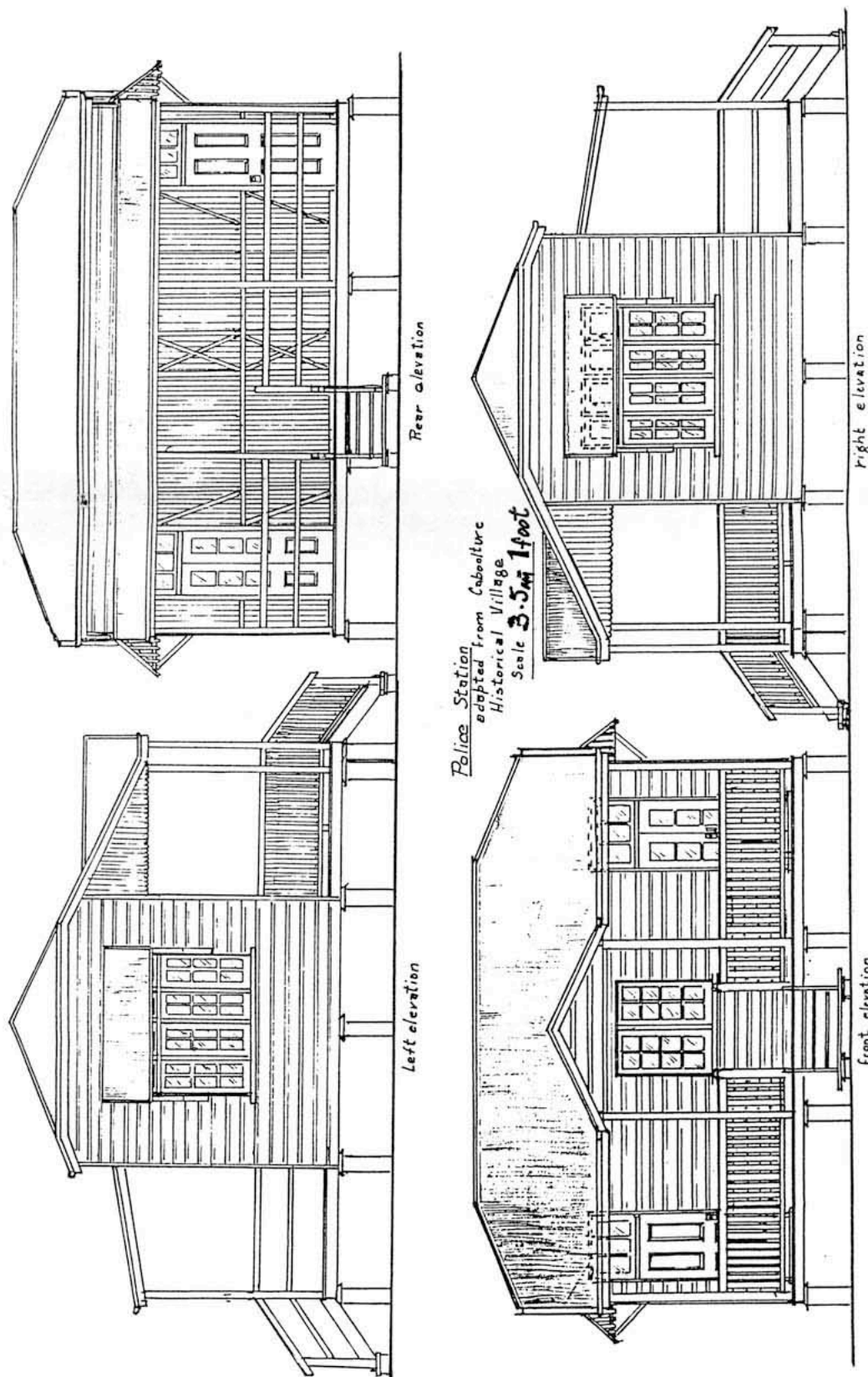




Police Station adapted from Caboolture Historical Village

Drawn by Jim Fainges, 1995

Nominal scale: 3.5 mm = 1'

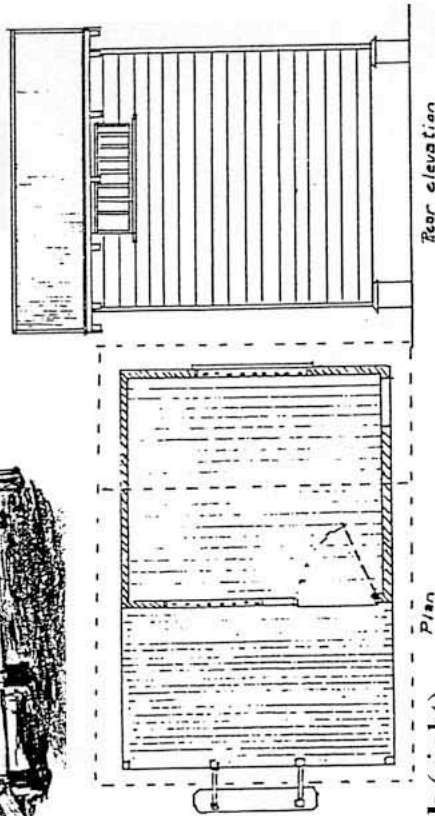
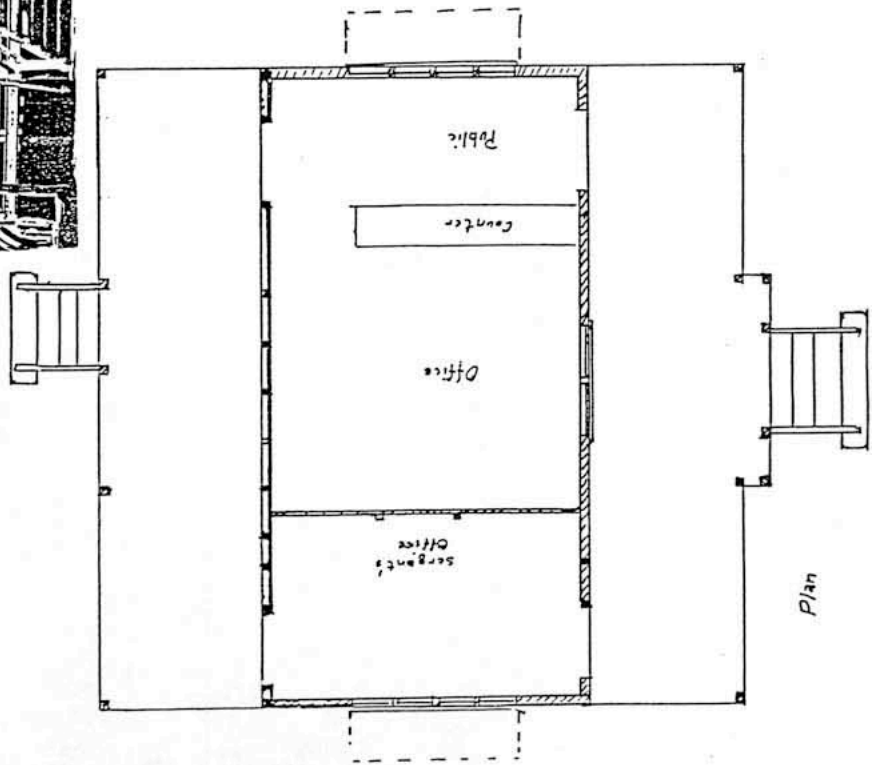
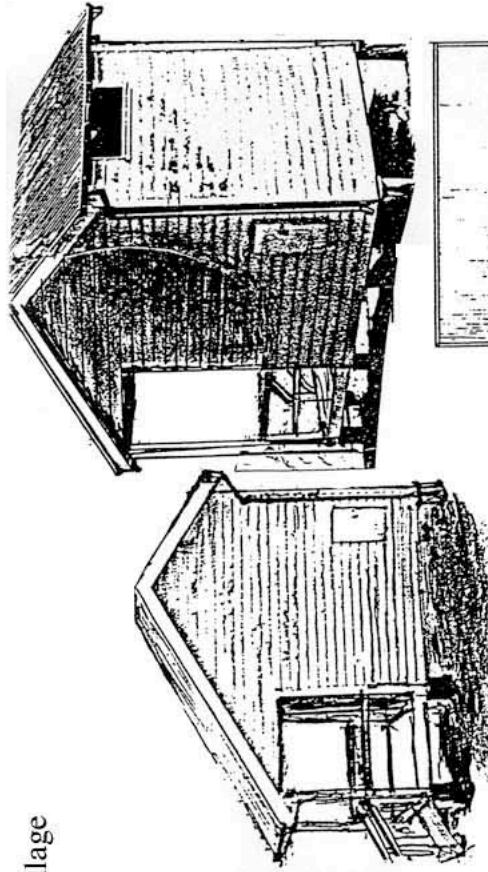
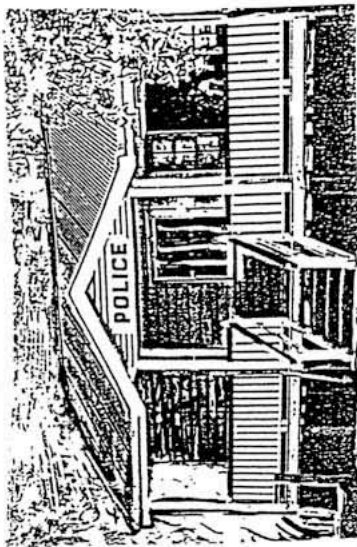




Police Station adapted from Caboolture Historical Village

Drawn by Jim Fainges, 1995

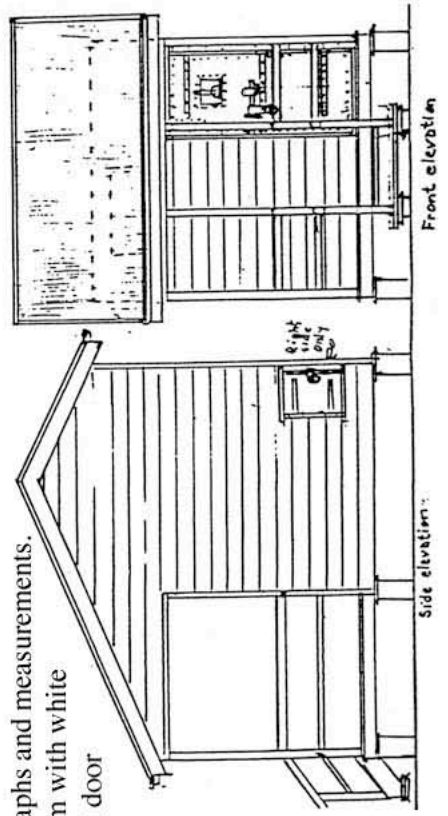
Nominal scale: 3.5 mm = 1'



Police Cell Block (right)

Drawn from photographs and measurements.

Colour scheme: cream with white and brown trim, steel door and bars black.





School Building at Caboolture Historical Village

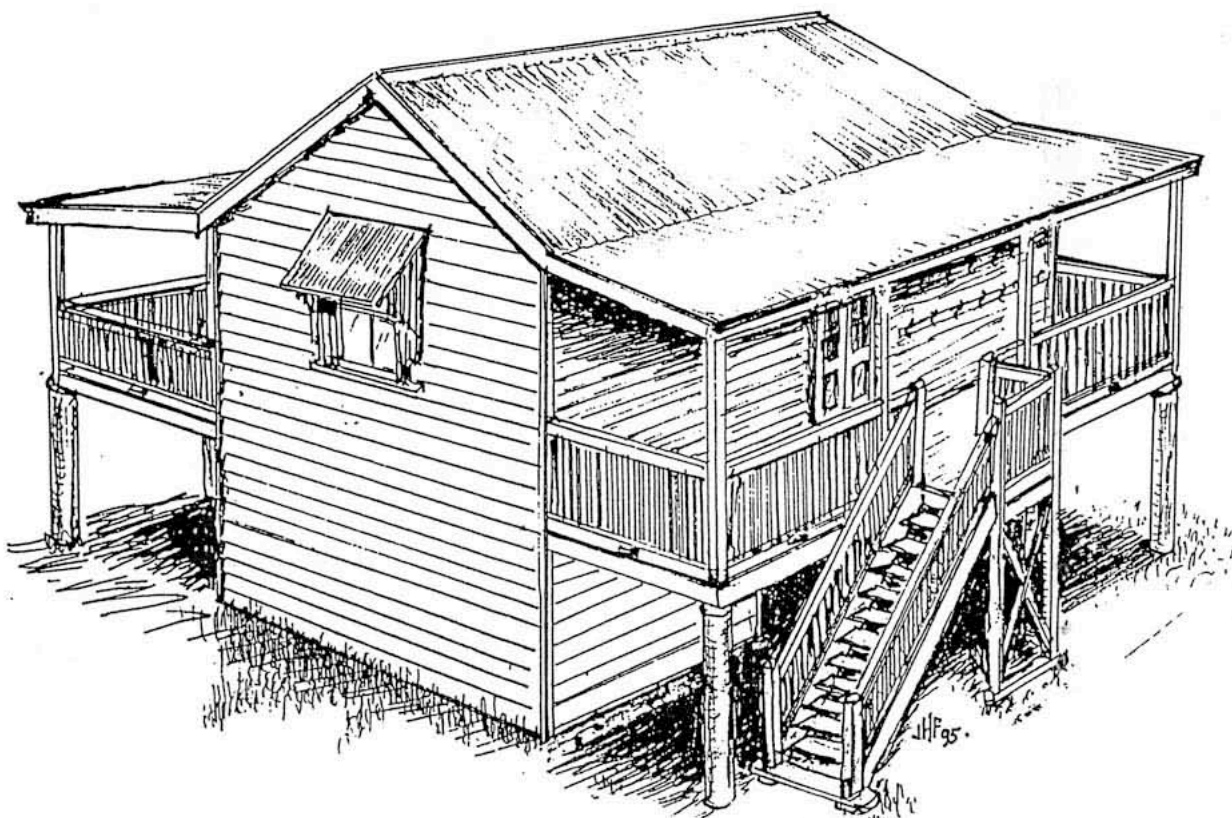
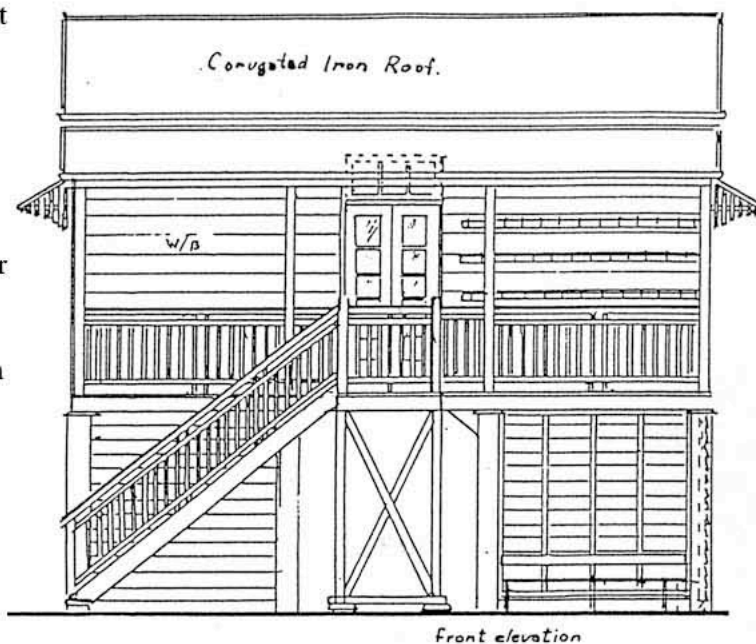
Drawn by Jim Fainges

Nominal scale: 3.5 mm = 1'

A small typical school building can be high set or low set during the era 1900 - 1940s.

The majority of schools in Queensland are high set with seating under for lunch and play on hot or wet days. The low set schools usually had a shelter shed nearby.

Wooden construction was typical with weather board on all walls. Some had vertical V/joint walls with exposed studs on the verandahs. Hat and coat racks were usual on the verandah walls as shown in drawings.

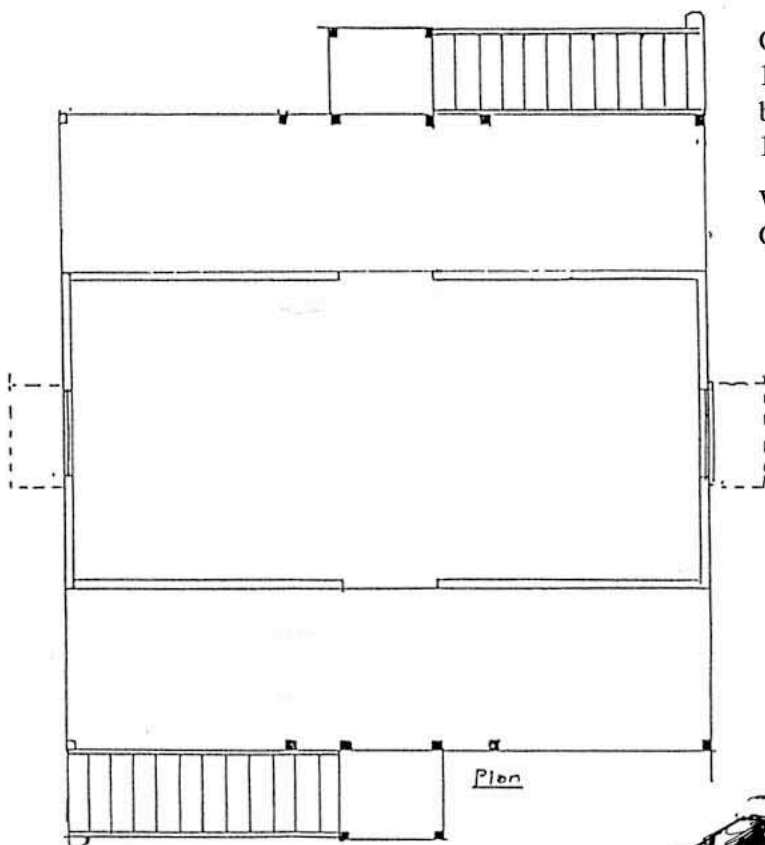
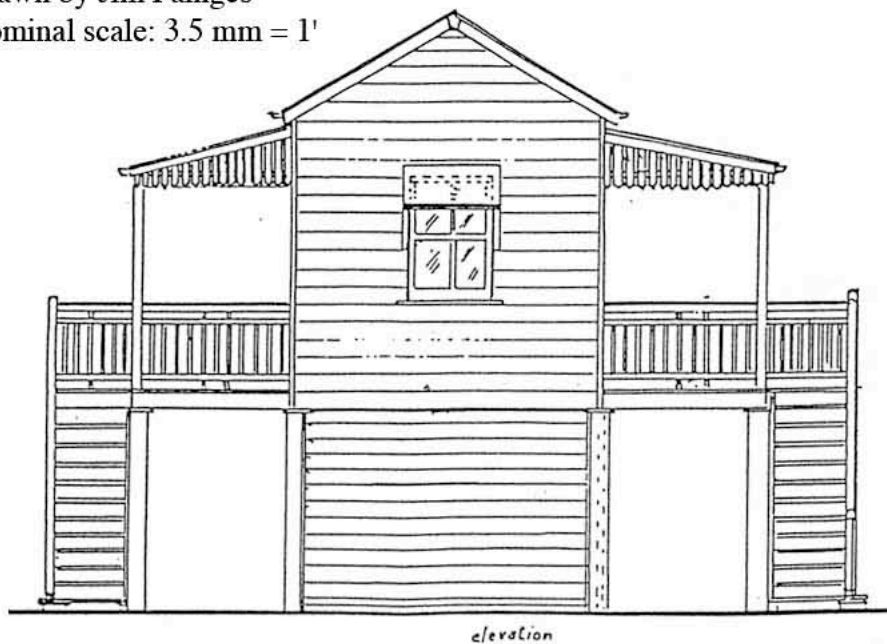




School Building at Caboolture Historical Village

Drawn by Jim Fainges

Nominal scale: 3.5 mm = 1'



Colour schemes

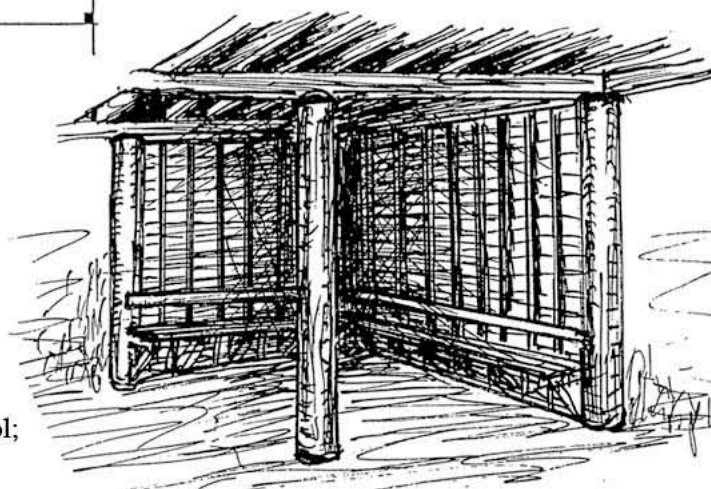
1900-1920s: weatherboard oiled wood (dark brown).

1930s-1940s: weatherboard warm cream.

Windows, rails, facias, etc., white.

Gutters and trim dark brown.

Spot detail (right):
seating under school;
similar each end.

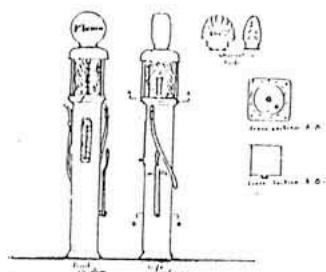
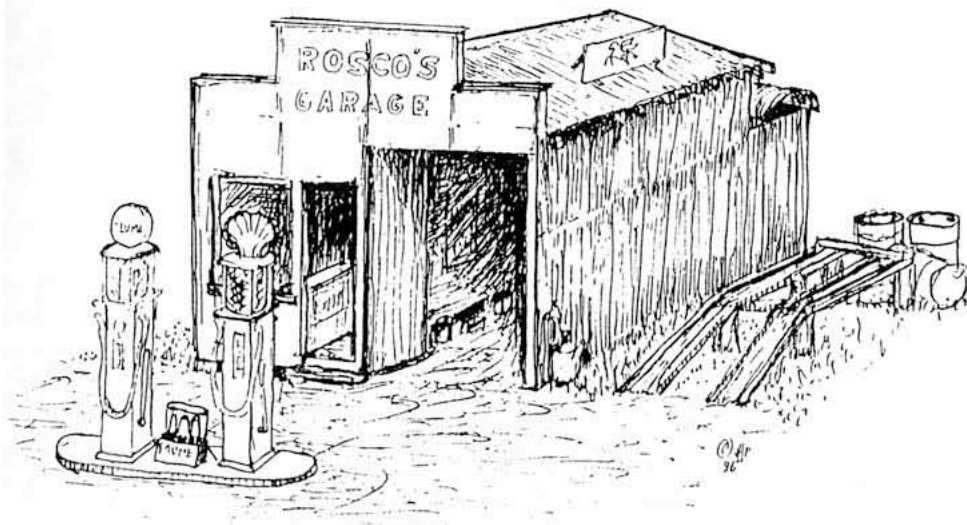




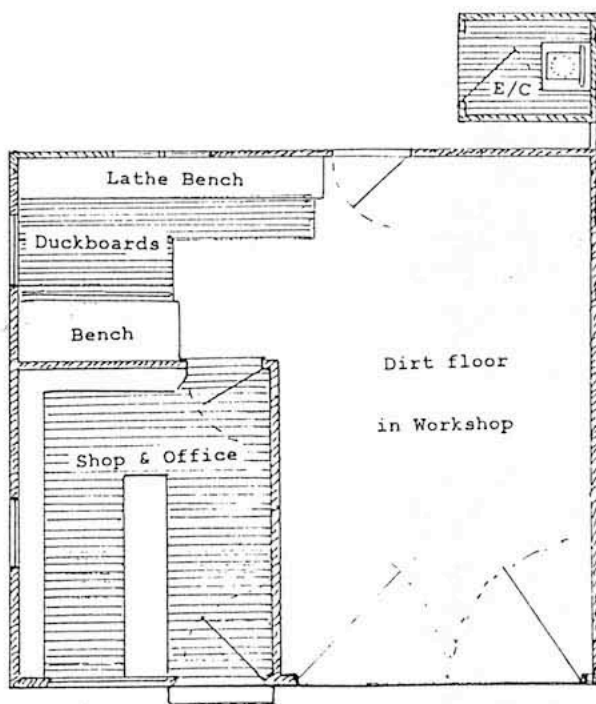
Country Service Station

Drawn by Jim Fainges 1996

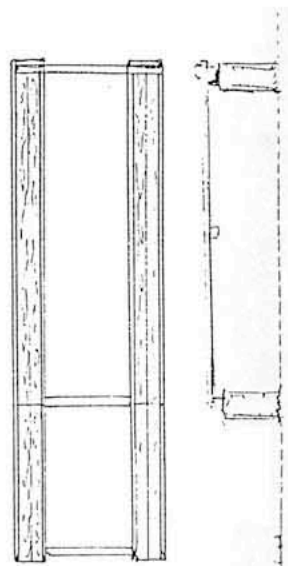
Nominal scale: 3.5 mm = 1'



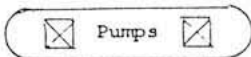
Pump



Plan



Grease Ramp

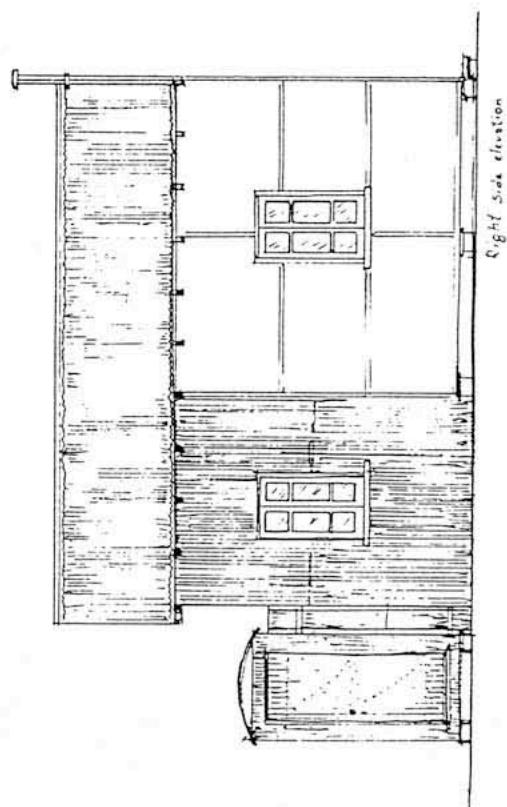
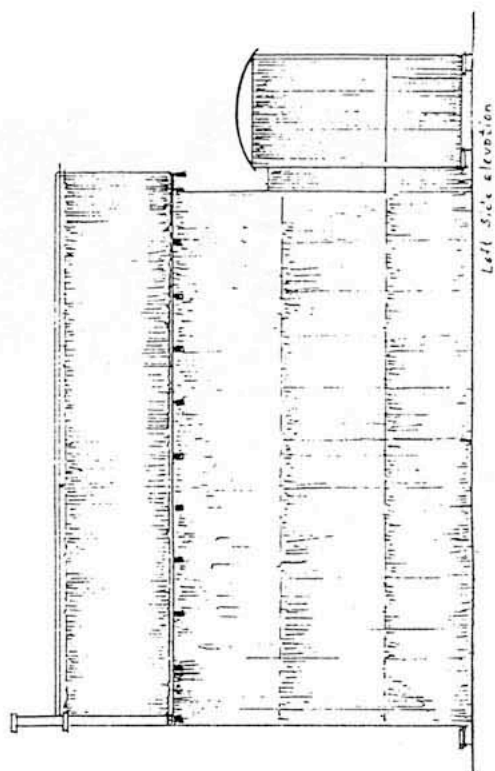
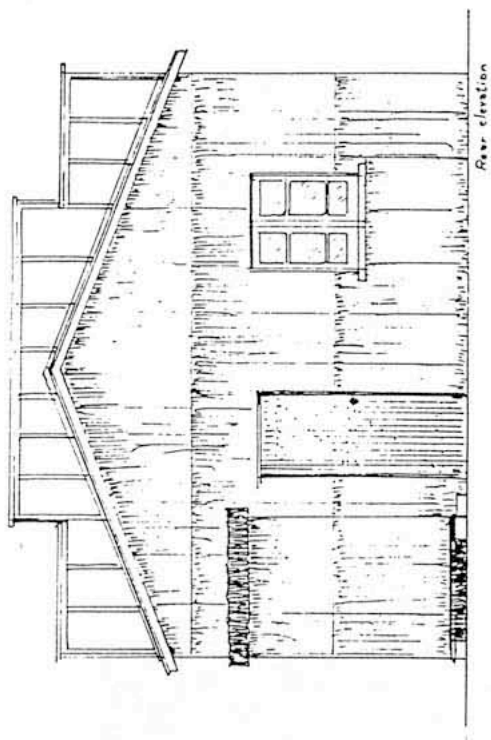
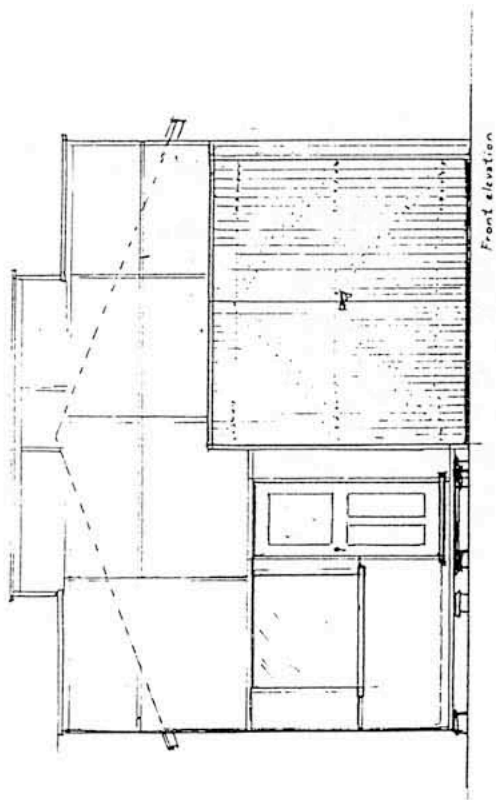


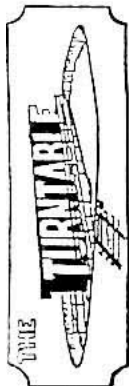


Country Service Station

Drawn by Jim Fainges 1996

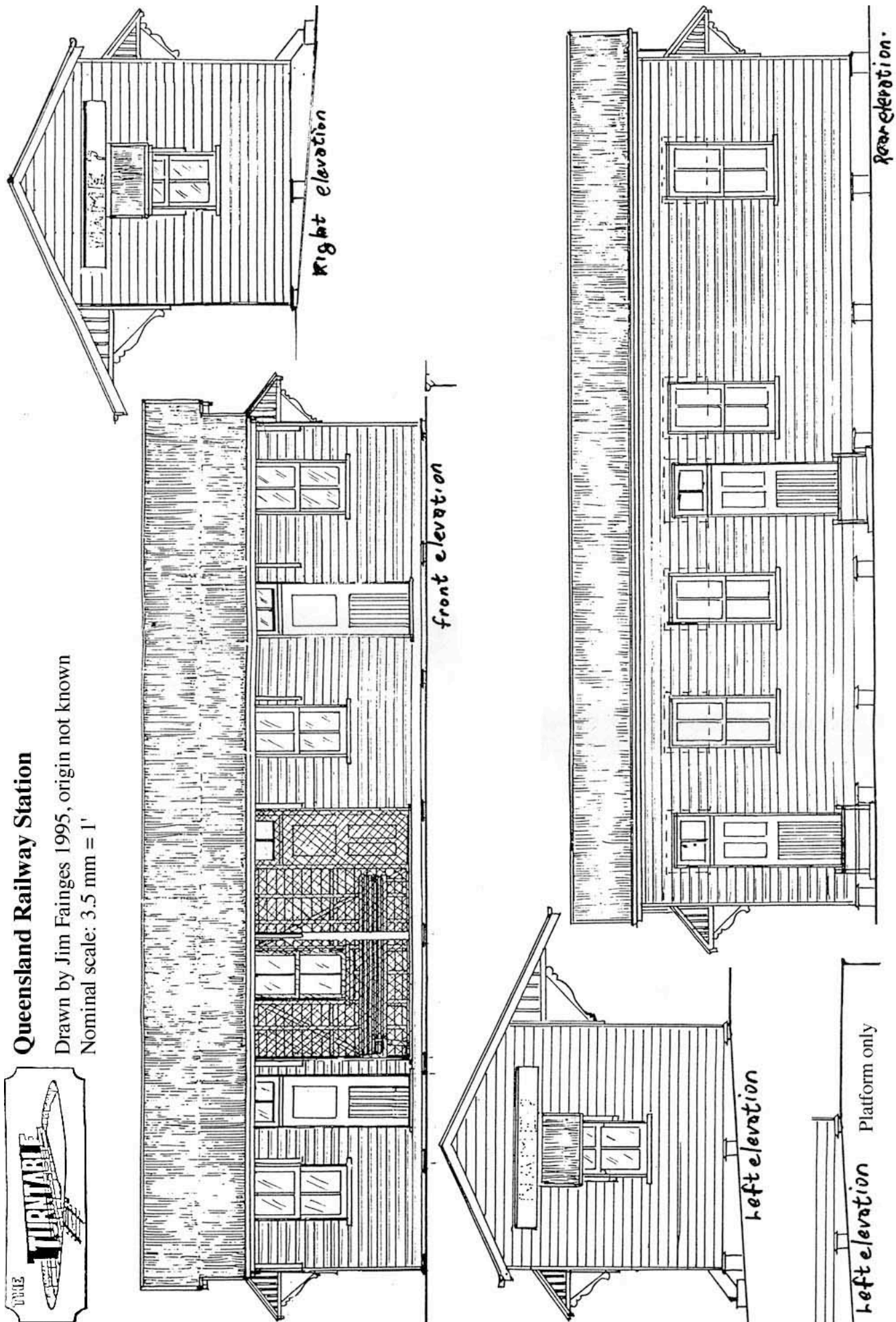
Nominal scale: 3.5 mm = 1'





Queensland Railway Station

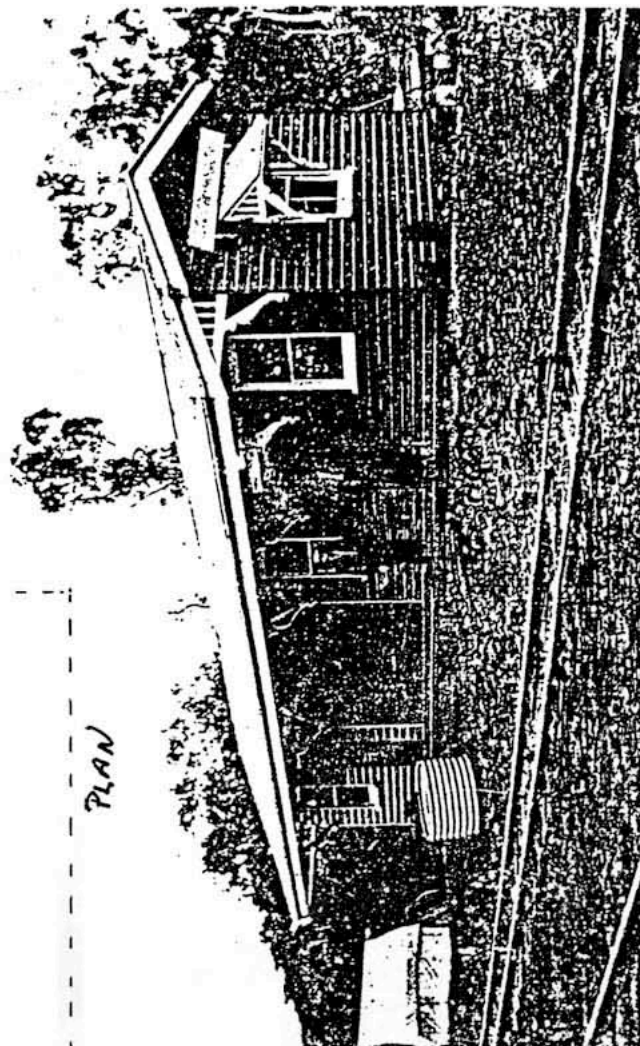
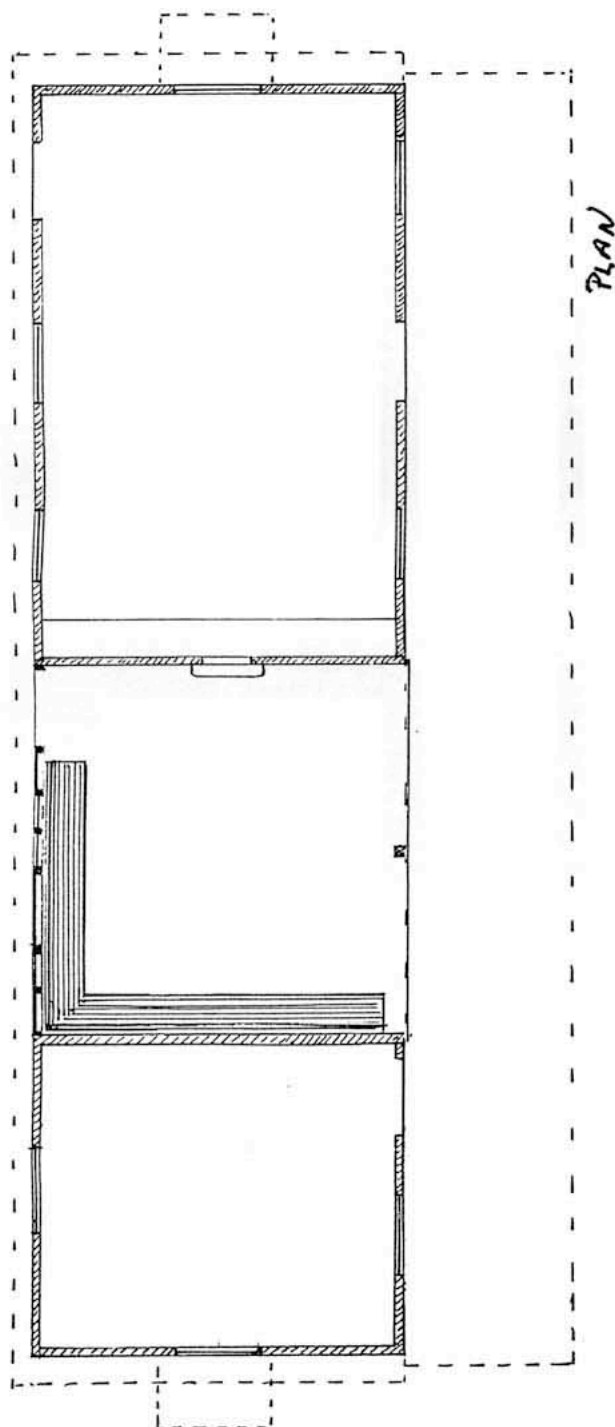
Drawn by Jim Fainges 1995, origin not known
Nominal scale: 3.5 mm = 1'





Queensland Railway Station

Drawn by Jim Fainges 1995, origin not known
Nominal scale: 3.5 mm = 1'

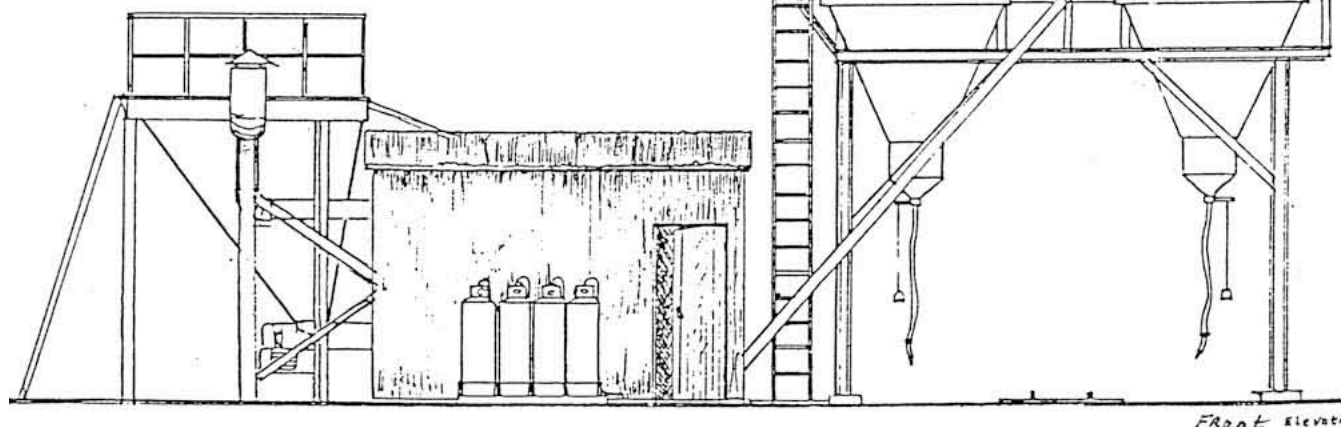




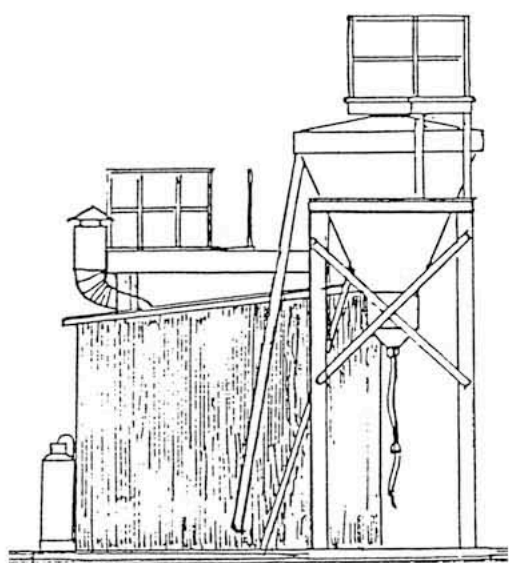
Modern Sand Drying Plant at Fairymead Sugar Mill

Drawn by Jim Fainges 1997

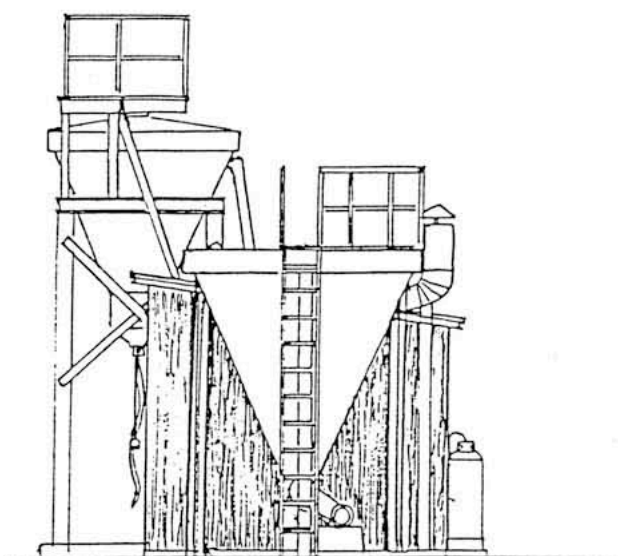
Nominal scale: 3.5 mm = 1'



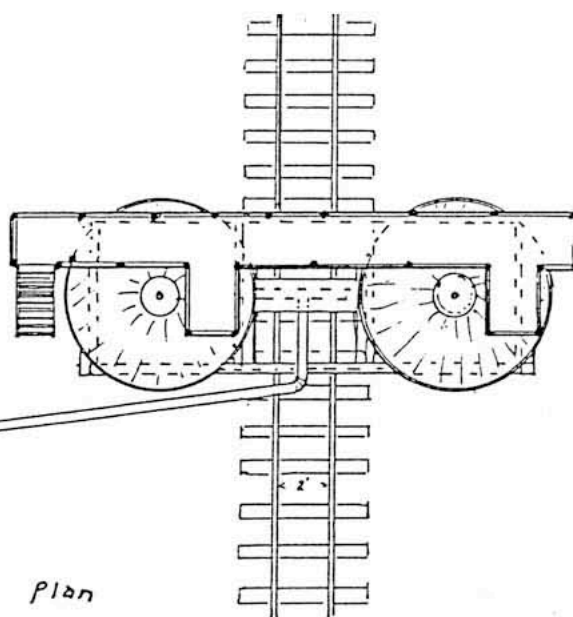
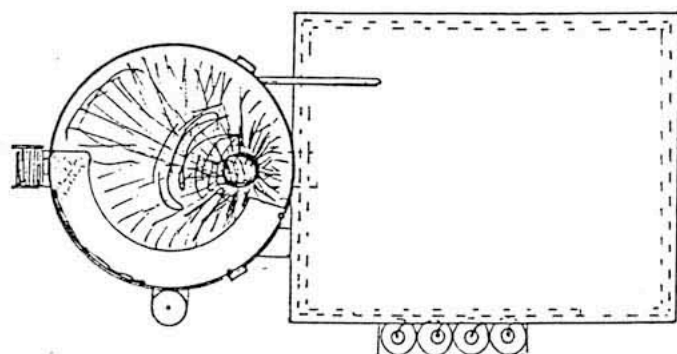
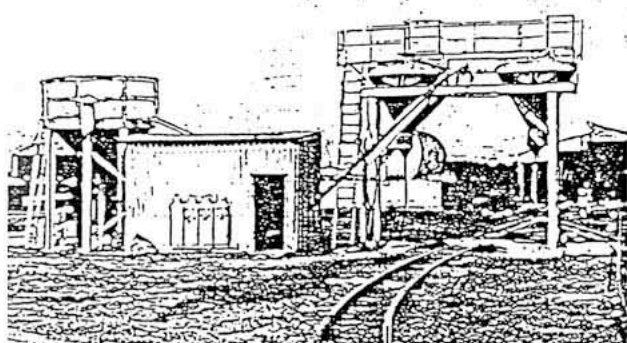
Front elevation



Right side elevation



Left side elevation

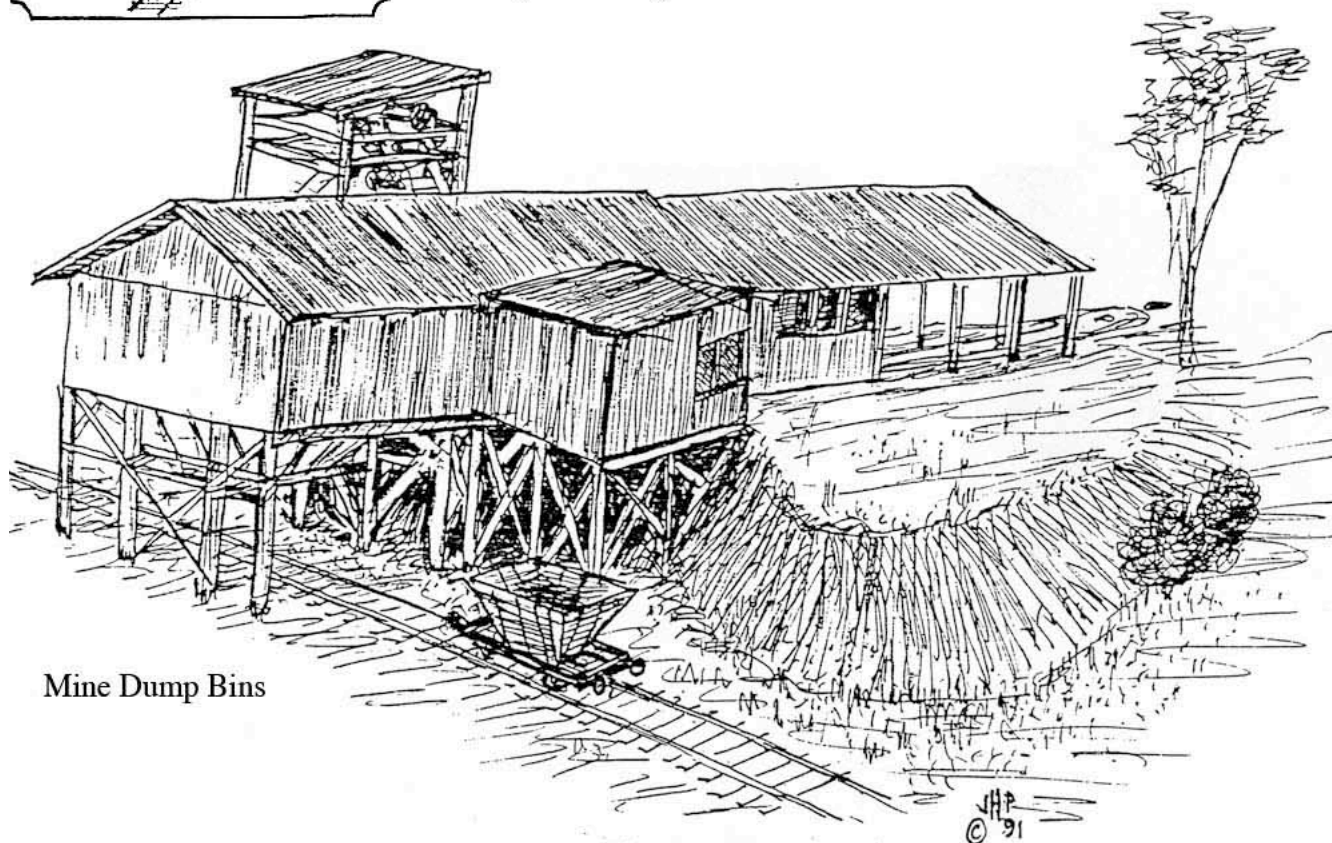


Plan



Ackland Coal Company (situated on the Darling Downs)

Drawn by Jim Fainges 1991



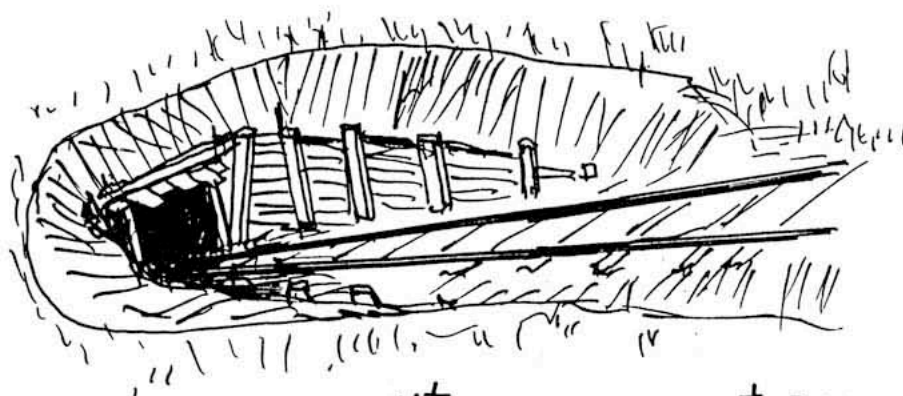
Mine Dump Bins

Situated on the Darling Downs (Queensland) at Ackland, near Cakey, is a small coal mine named Ackland Coal Co. It was the oldest and smallest continually worked coal mine in Queensland. The mine buildings are now a museum with most of the old machinery still in place. The mine was connected to the Queensland Railway by way of a siding.

The underground section of the mine, which was of board and pillar type mining, was worked by 2 foot gauge skips hauled up by a winch cable, and moved underground by Jenbach locomotives.

This mine would make a very interesting model and an excellent addition to the industrial section of your layout. The dump and weight house stands on a raised area and is partly open, making detailing a must. The skips dumped into a bin which was below and had a screen over it. A sorting area is off to one side of the bin and two elevators took the coal to the outgoing bins. The coal was then dumped directly into railway wagons, with the overburden scattered around the site.

These are working notes for the more experienced modeller. Dimensions are shown for the ancillary buildings but no scale is suggested.



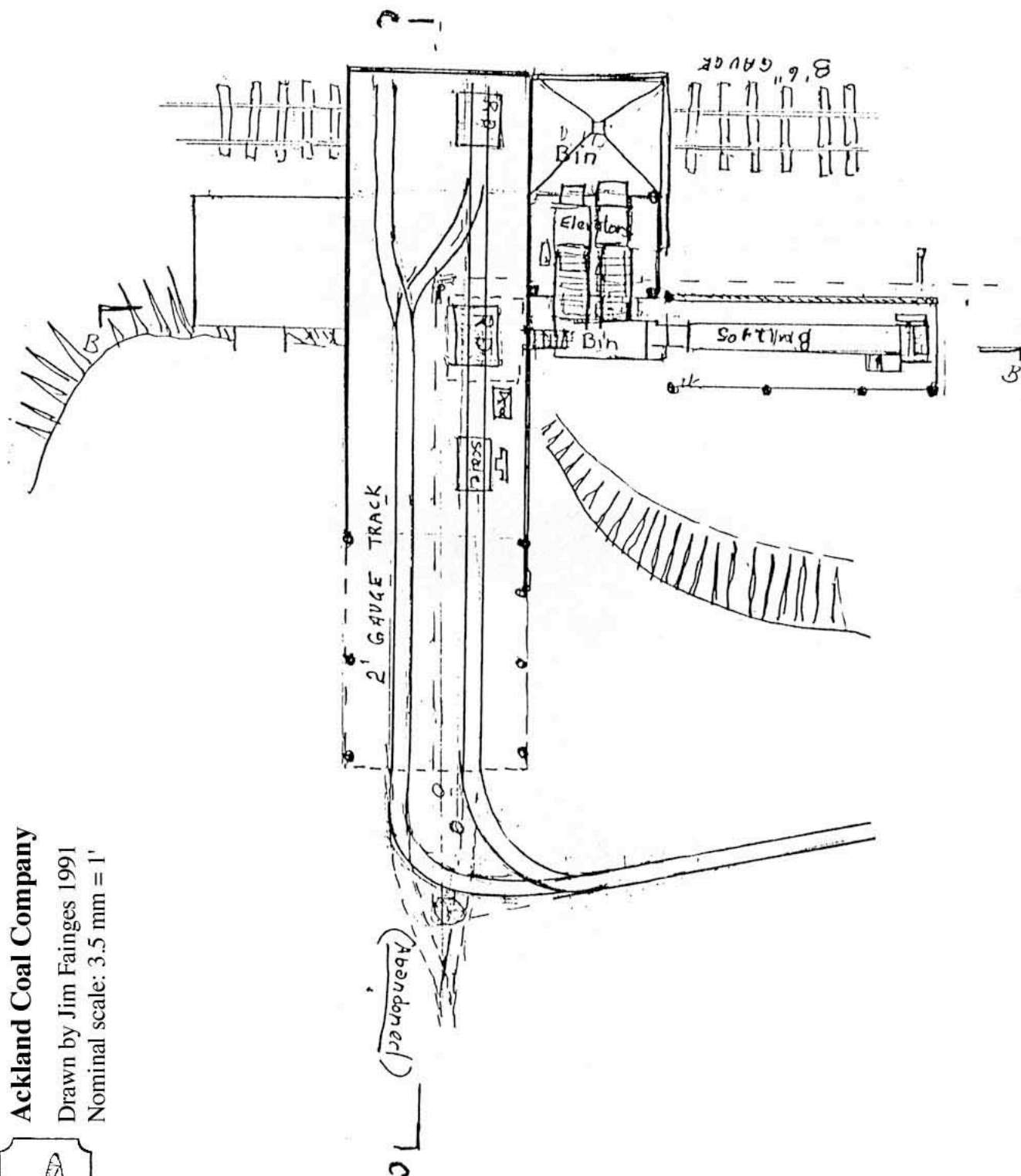
The adit or mine entrance.

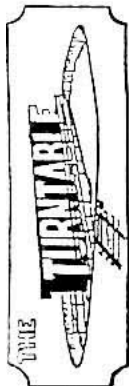


Ackland Coal Company

Drawn by Jim Fainges 1991

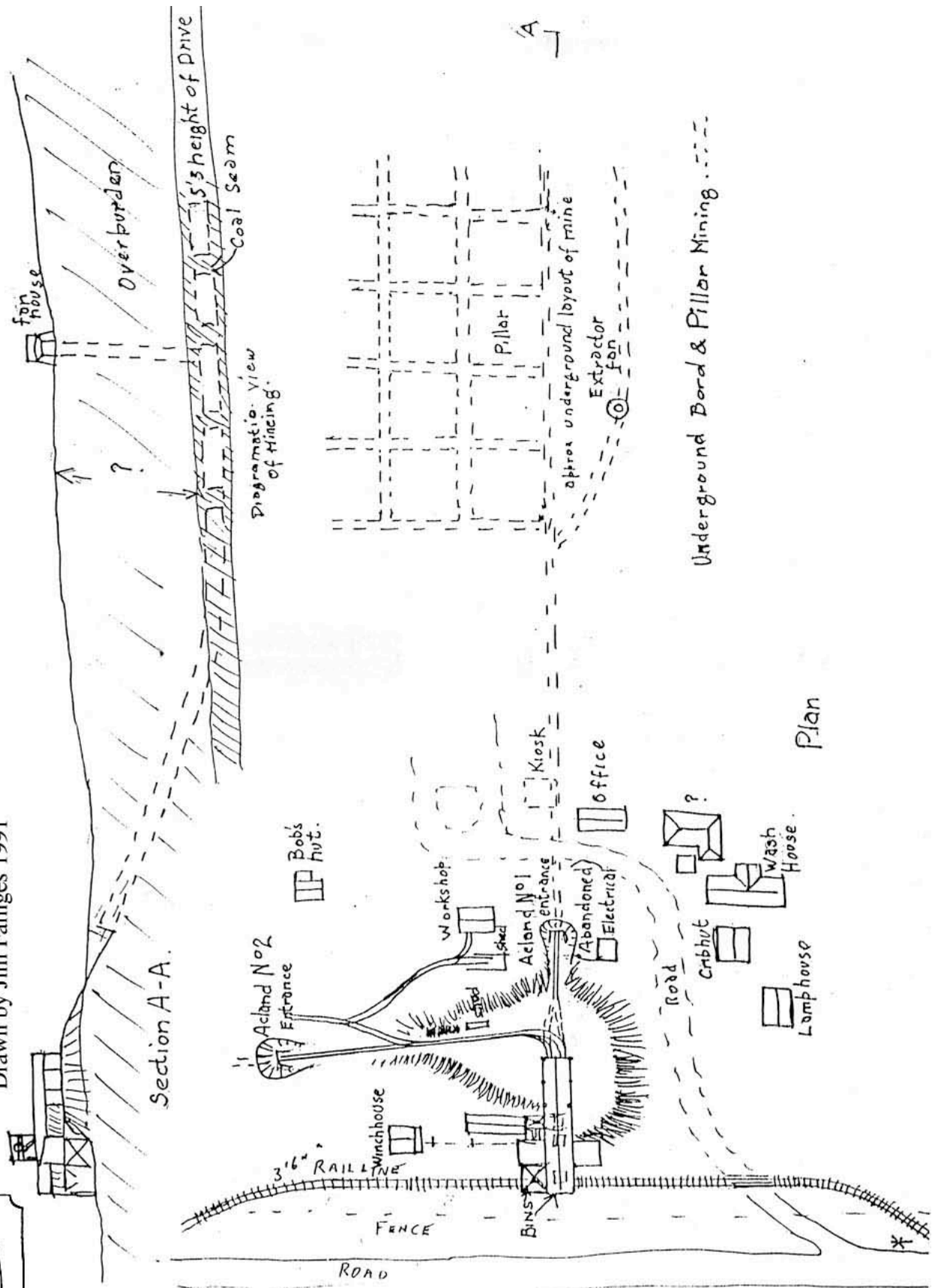
Nominal scale: 3.5 mm = 1'





Ackland Coal Company

Drawn by Jim Fainges 1991

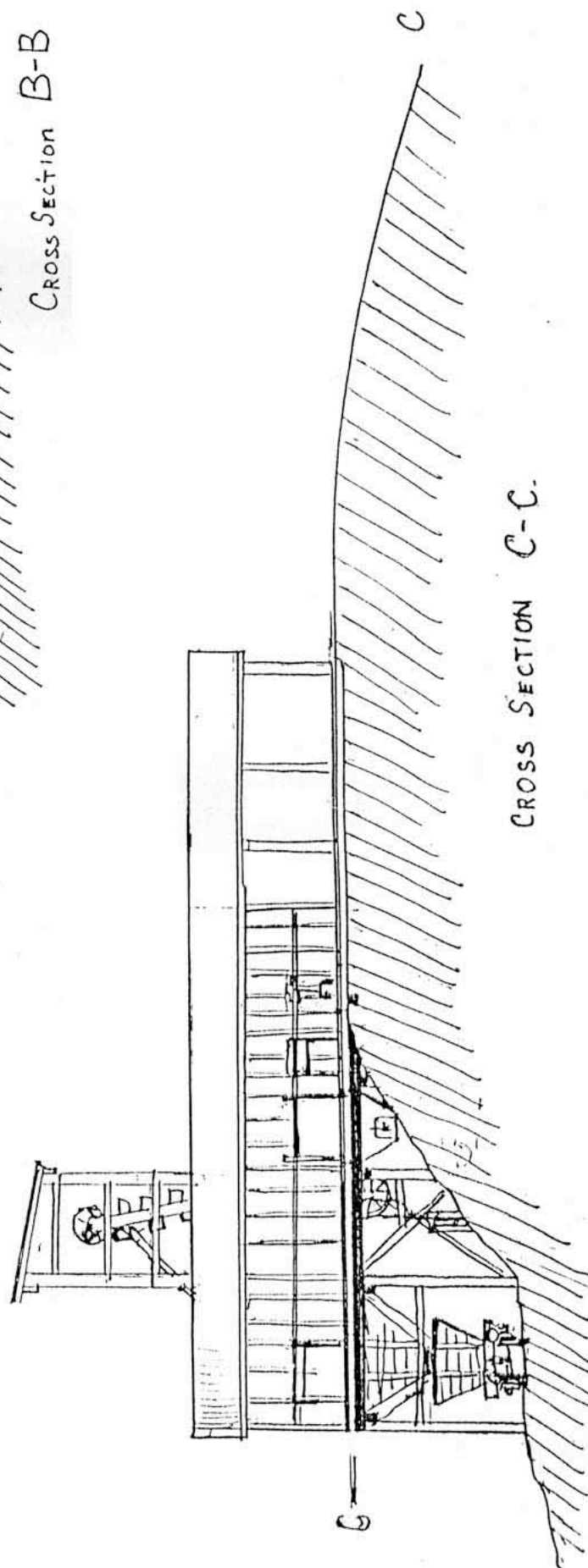
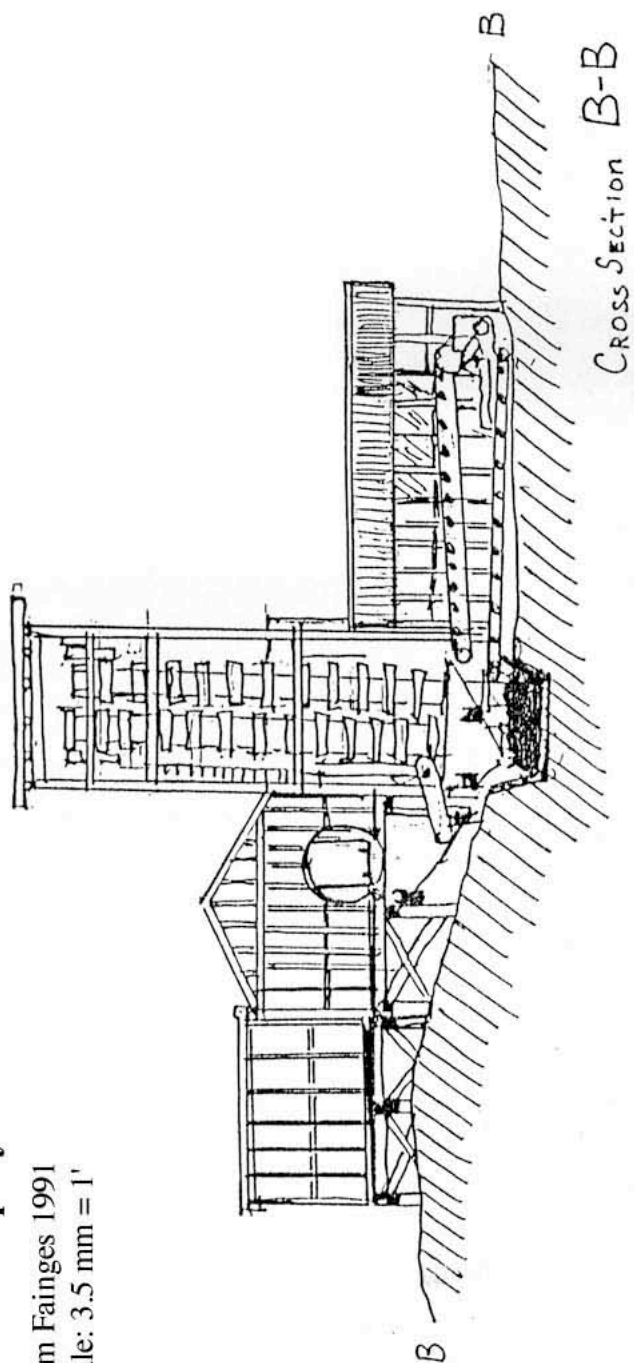




Ackland Coal Company

Drawn by Jim Fainges 1991

Nominal scale: 3.5 mm = 1'

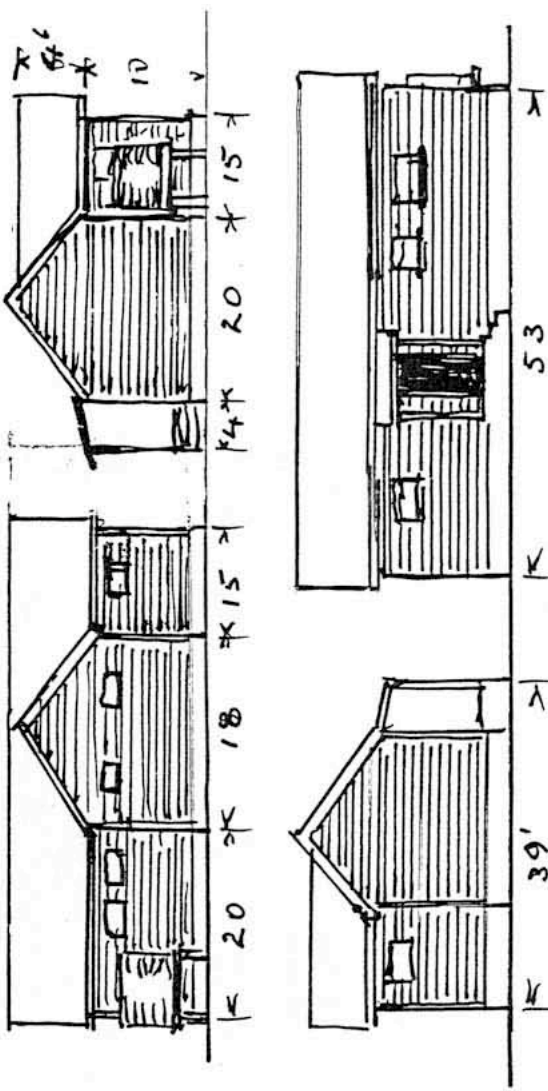
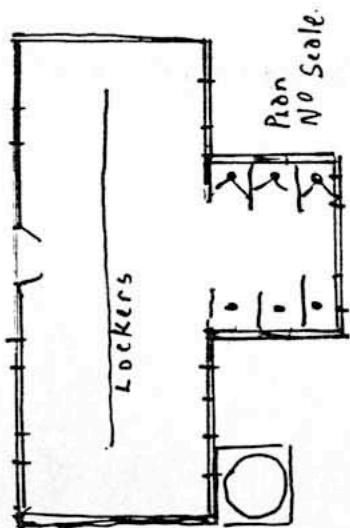
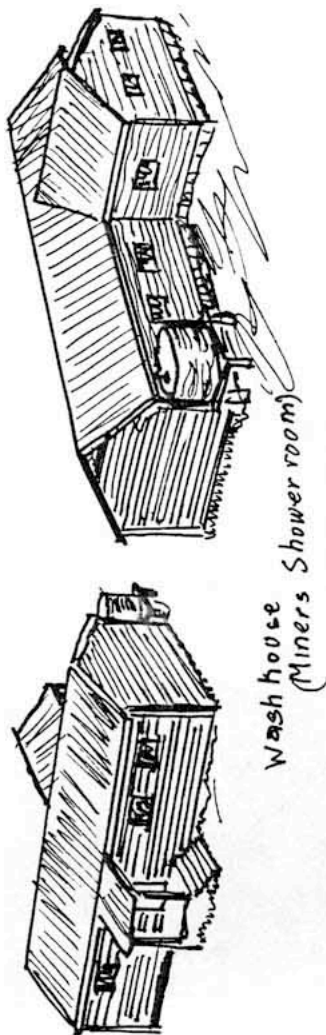
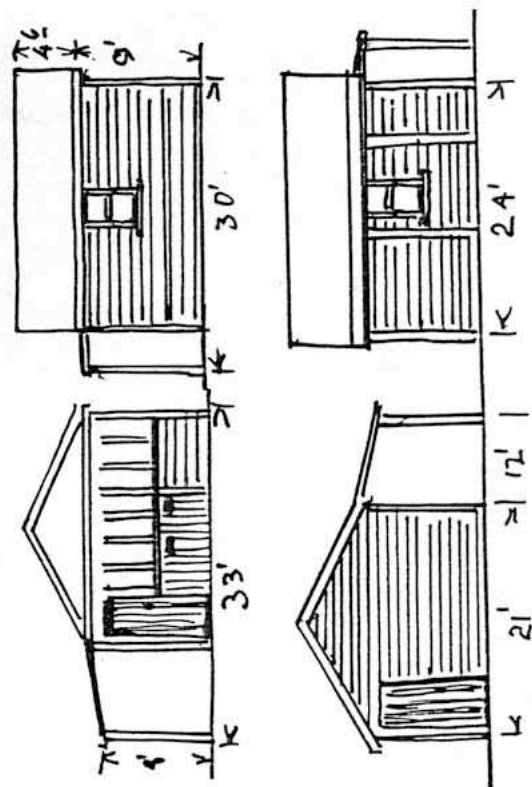
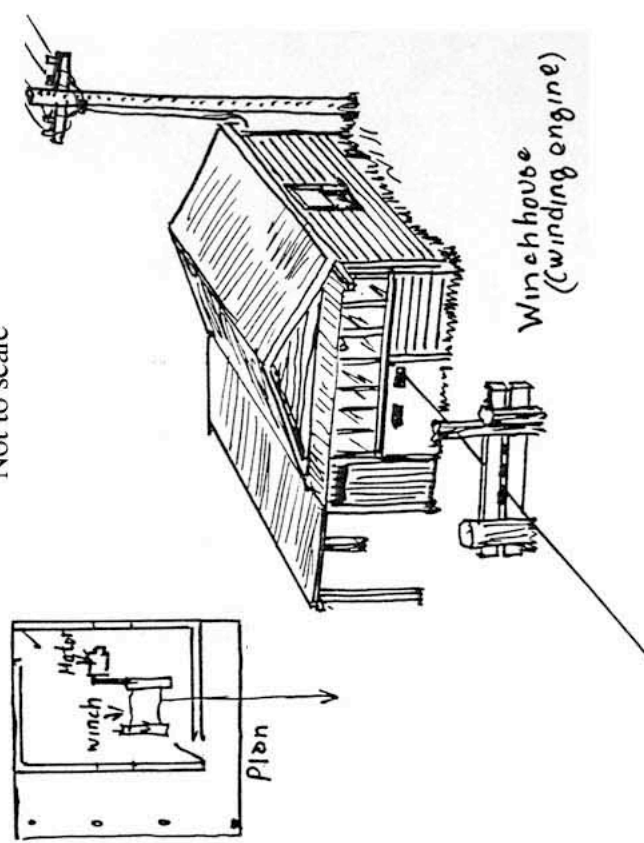




Ackland Coal Company

Drawn by Jim Fainges 1991

Not to scale

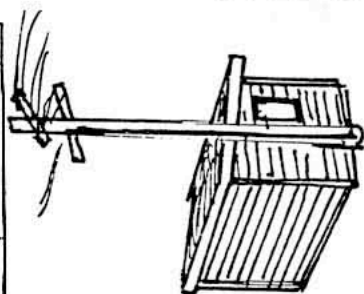




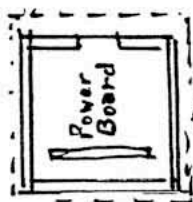
Ackland Coal Company

Drawn by Jim Fainges 1991

Not to scale



ELECTRICAL POWER SHED



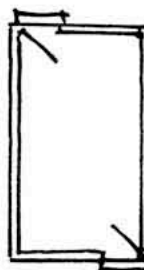
STORE



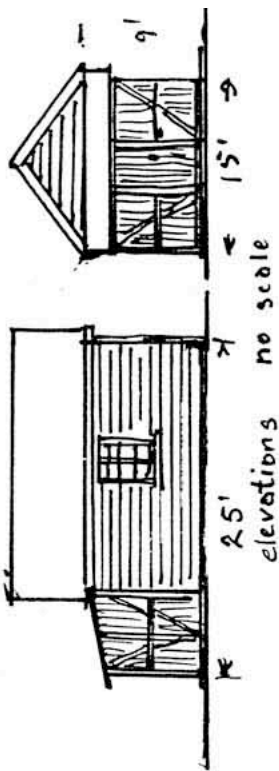
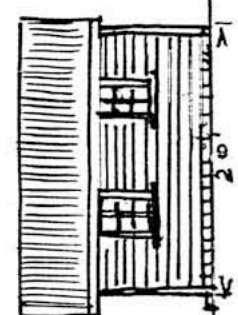
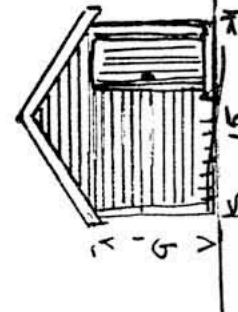
elevations



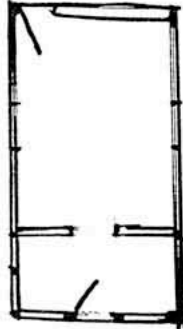
CRIB HUT.



Plan No scale



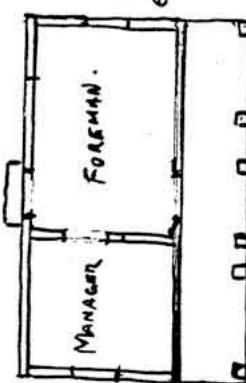
elevations no scale



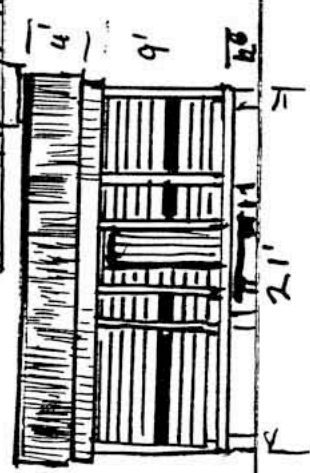
Plan No Scale



OFFICE



Plan and elevations Not To scale

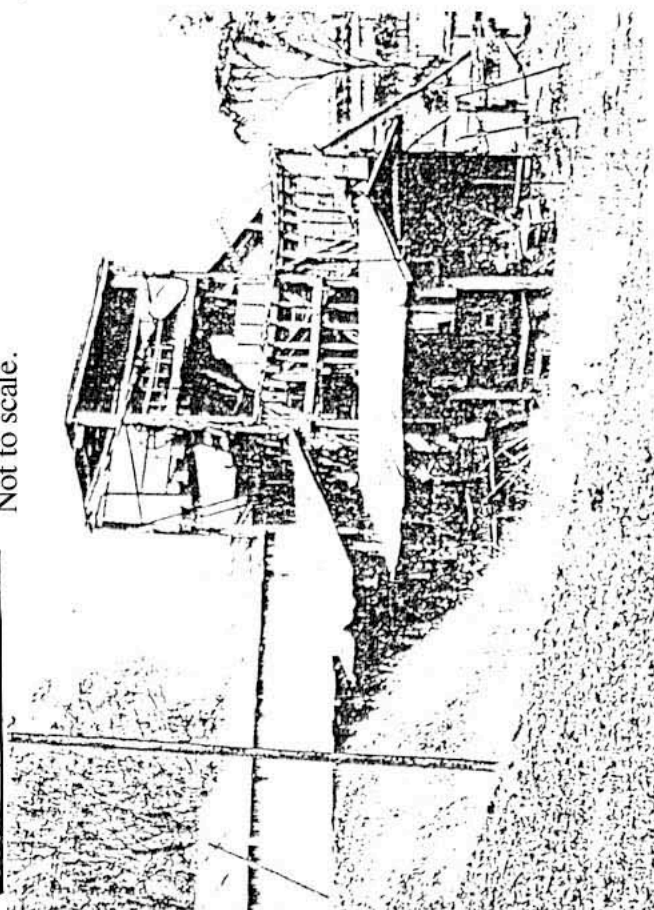


elevations



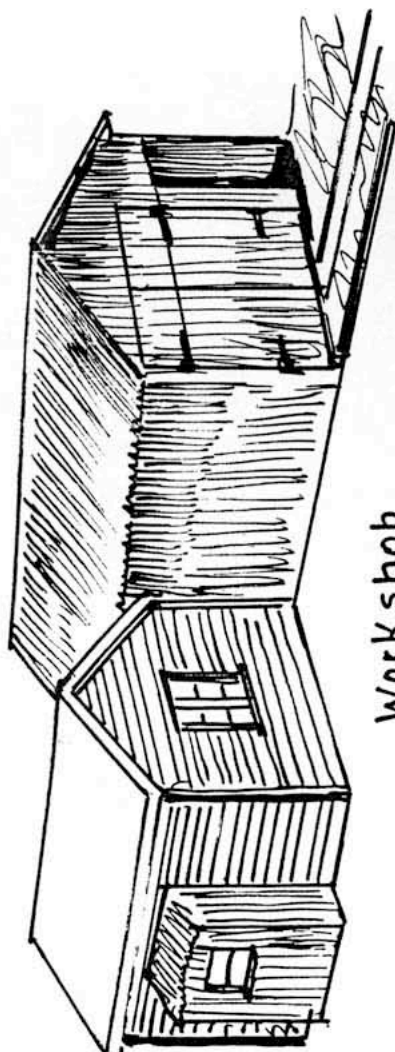
Ackland Coal Company

Drawn by Jim Fainges 1991
Not to scale.

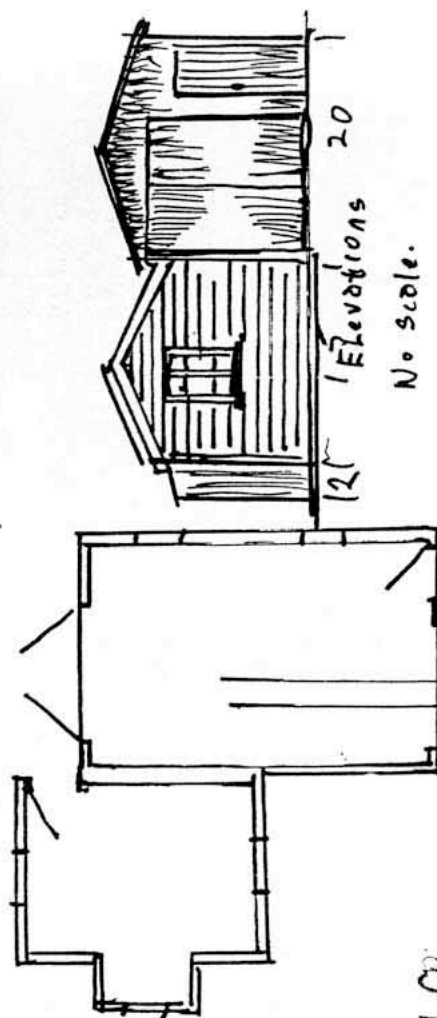


ELEVATORS & SORTING SHED LATER PHOTO.

COLLERY FROM FRONT
GATE NOTE STRUCTURE
IN THIS EARLY PHOTO

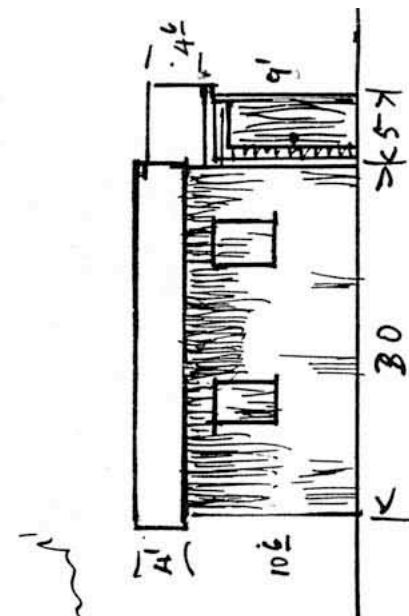


Workshop



Elevations 20

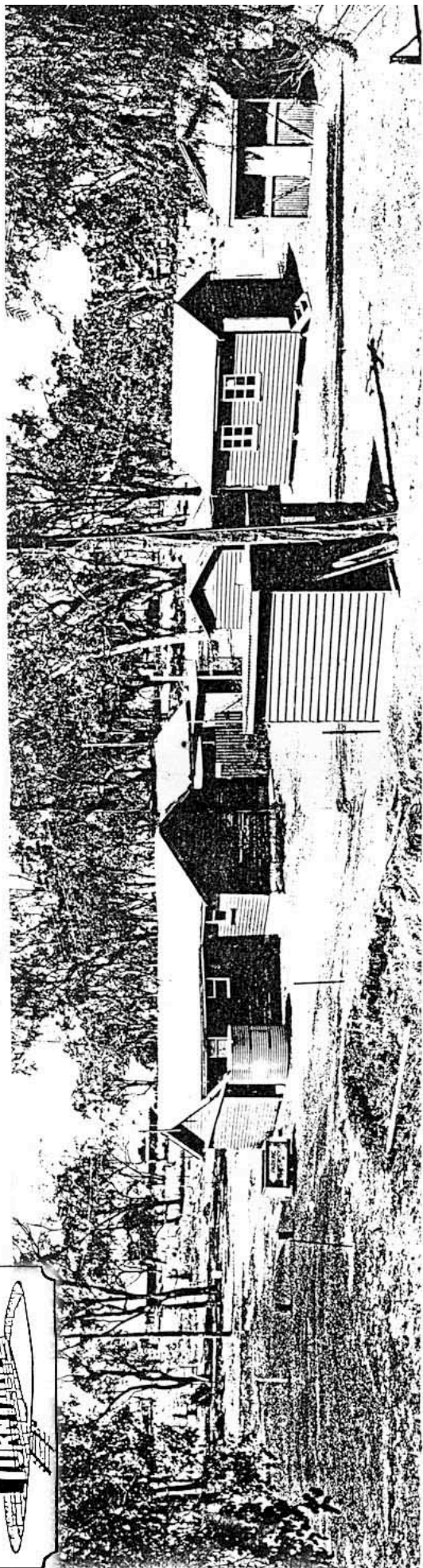
No scale.



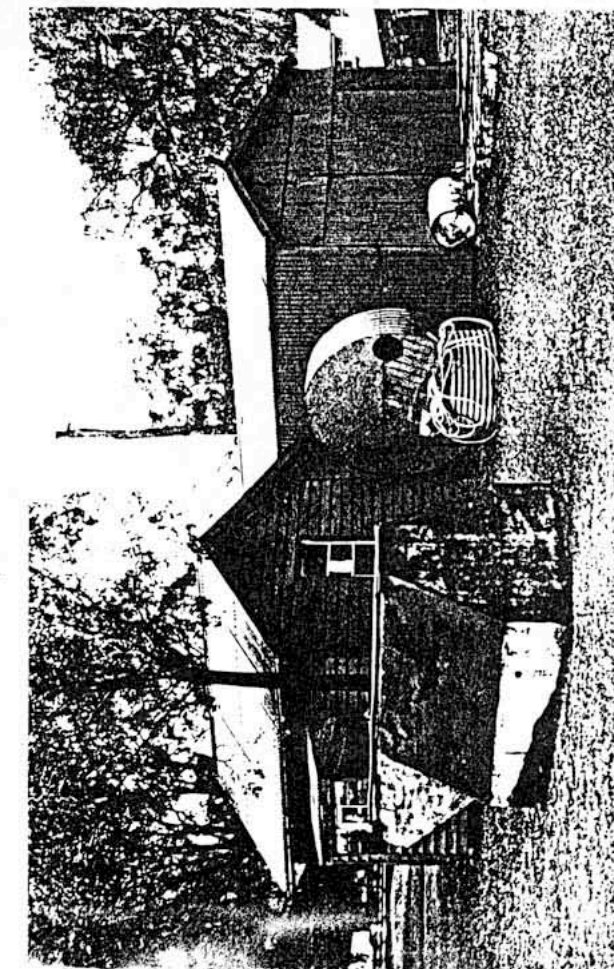
Workshop Plan
No Scale



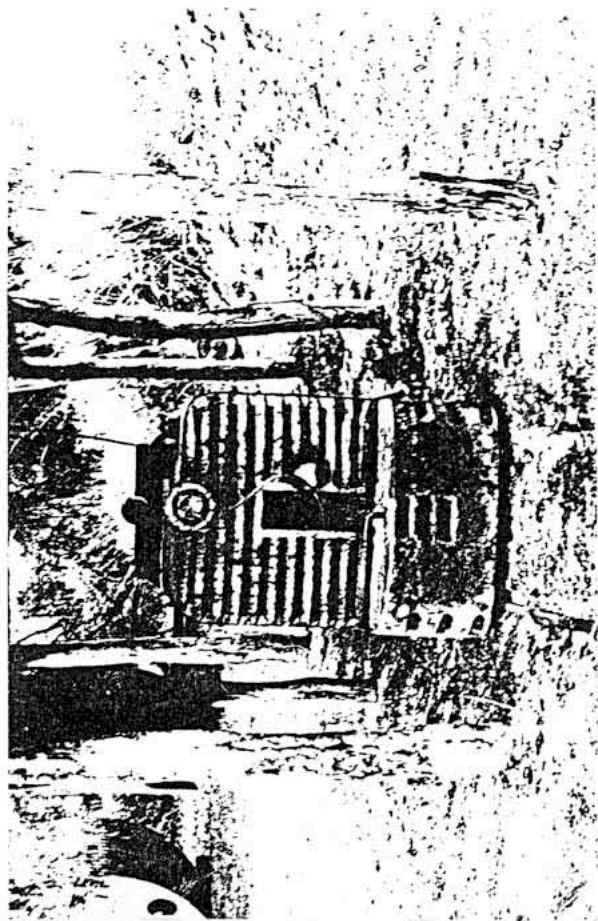
Ackland Coal Company



Panoramic View of Ancillary buildings



Work shop.

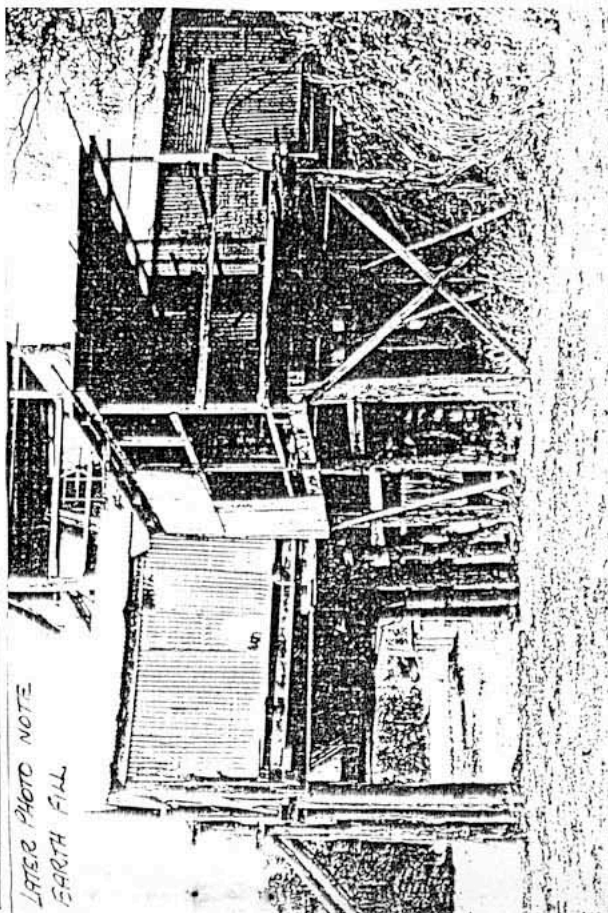


one of the Jenbach locomotives

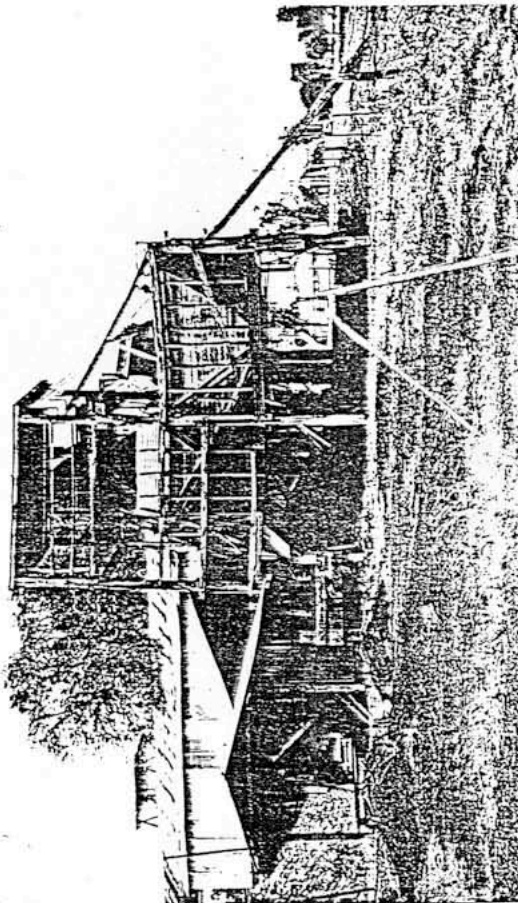
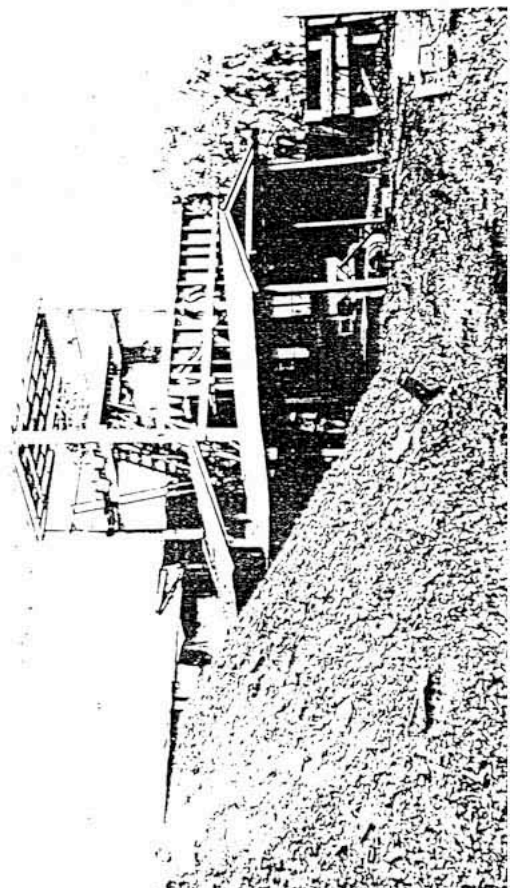
Ackland Coal Company



LATER PHOTO NOTE
EARTH FILL



Elevators and sorting shed, later photo (above), and earlier (below).



Bins and sheds from sorting shed side (above). Close-up of bins and elevators (below).

